

CERTIFICATE OF LOCATION OF GOVERNMENT CORNER

County of Anoka

State of Minnesota

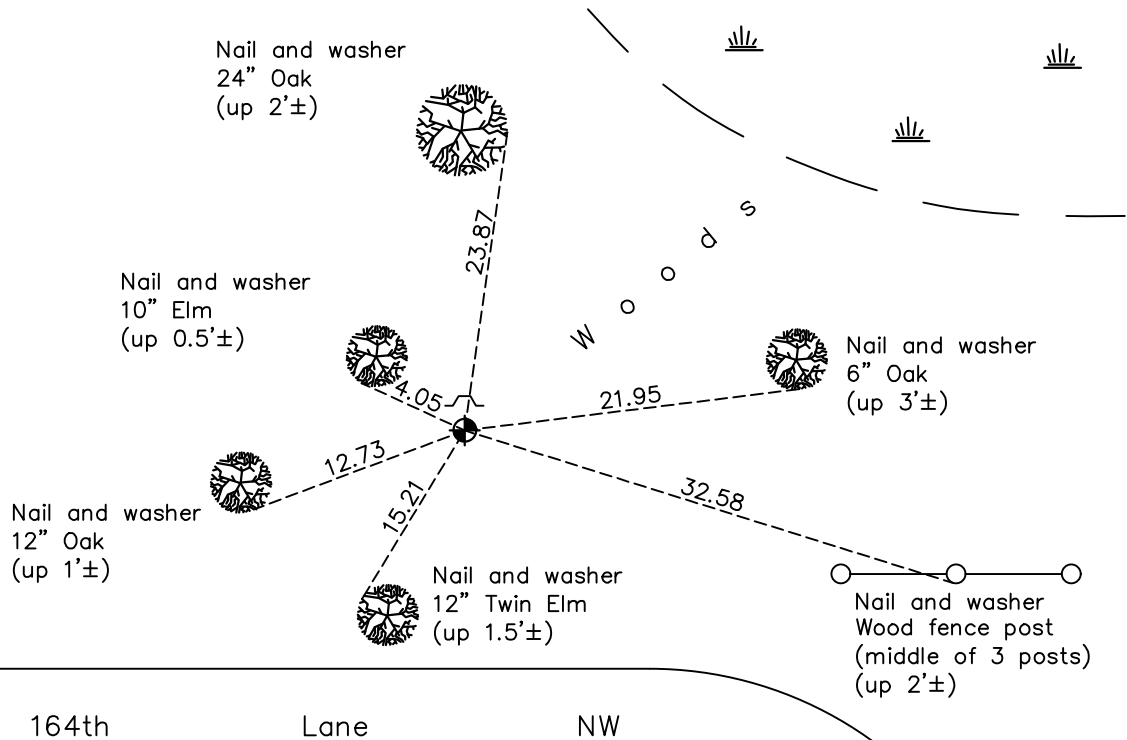
Northeast Corner of Sec. 15 Township 32 Range 25

On the 24th day of July, 1961, the described corner was evidenced by area resurvey

and to perpetuate the location of said corner, at the exact location thereof, a permanent marker was placed consisting of a cast iron monument

AND on the 29th day of September, 2022, said permanent marker was found up 0.1' with a sign and post on the north side and the ties were updated

Updated reference ties are as shown below.



N
W ANOKA COUNTY SURVEYOR E
S

Revision Date
12/30/22

N.A.D. 1983 Coordinates
(1996 Adjustment)

County Project Coordinates	
Northing	<u>185667.8188</u>
Easting	<u>458105.9914</u>
Date	<u>12/29/99</u>

I hereby certify that this United States public land survey monument record is correct and complete to the best of my knowledge and belief.

David Zieglmeier Date 2/22/23

David Zieglmeier Anoka County Surveyor
Minnesota License Number 46179

HISTORY OF GOVERNMENT CORNER

Page No. 51

County of Anoka

State of Minnesota

Northeast Corner of Sec. 15 Township 32 Range 25

CORNER HISTORY:

July 24, 1961 – Set cast iron monument up $0.3'\pm$ and established ties to monument.
See notes in survey file

August 11, 1964 – Found cast iron monument and updated ties.

June 19, 1969 – Found cast iron monument and updated ties.

August 15, 1972 – Found cast iron monument and updated ties.

June 28, 1976 – Found cast iron monument and updated ties.

June 19, 1979 – Found cast iron monument and updated ties.

August 23, 1982 – Found cast iron monument and updated ties.

July 6, 1988 – Found cast iron monument and updated ties.

August 11, 1993 – Found cast iron monument with sign and post and updated ties.

December 29, 1999 – Found cast iron monument with sign and post on the north side of monument and established NAD 1983 (1996 Adjustment) Anoka County Project Coordinates by Static GPS methods. Updated ties.

April 28, 2010 – Found cast iron monument up $0.1'\pm$ with a sign and post on the north side and updated ties.

August 12, 2015 – Found cast iron monument up $0.1'\pm$ with a sign and post on the north side and updated ties.

May 26, 2020 – Found cast iron monument up $0.1'\pm$ with a sign and post on the north side and updated ties.

September 29, 2022 – Found cast iron monument up $0.1'\pm$, verified position by VRS GPS method and the ties were updated.