

CERTIFICATE OF LOCATION OF GOVERNMENT CORNER

County of Anoka

State of Minnesota

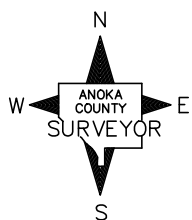
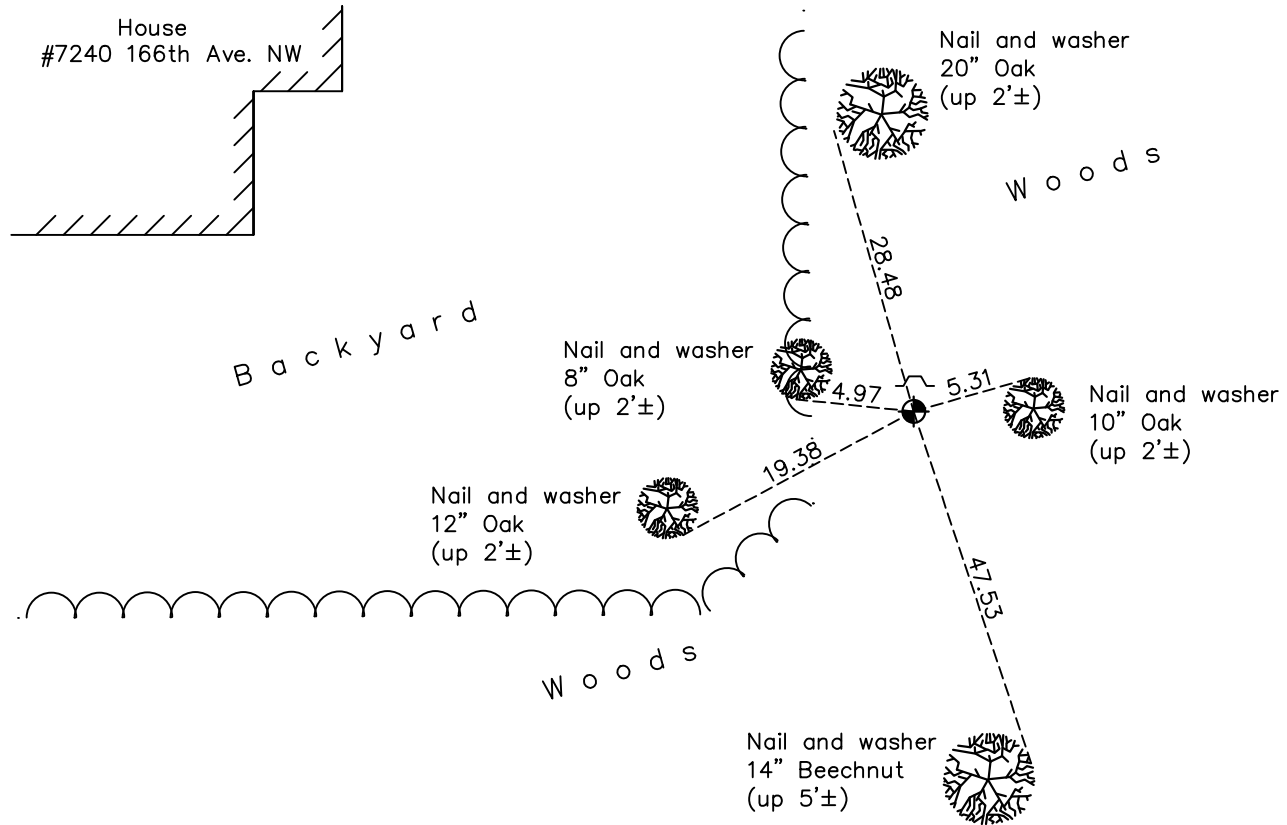
Southwest Corner of Sec. 10 Township 32 Range 25

On the 10th day of July, 1961, the described corner was evidenced by doubling the distance from the West 1/4 through the 1/16th corner

and to perpetuate the location of said corner, at the exact location thereof, a permanent marker was placed consisting of a cast iron monument with a sign and post on the north side

AND on the 7th day of October, 2022, said permanent marker was found up 0.1' and the ties were updated

Updated reference ties are as shown below.



Revision Date
 12/30/22

N.A.D. 1983 Coordinates
 (1996 Adjustment)

County Project Coordinates	
Northing	185668.1151
Easting	452840.4888
Date	3/01/00

I hereby certify that this United States public land survey monument record is correct and complete to the best of my knowledge and belief.

David Zieglmeier Date 2/22/23

David Zieglmeier Anoka County Surveyor
 Minnesota License Number 46179

HISTORY OF GOVERNMENT CORNER

Page No. 53

County of Anoka

State of Minnesota

Southwest Corner of Sec. 10 Township 32 Range 25

CORNER HISTORY:

July 10, 1961 – Set cast iron monument up $0.3'\pm$ using a straight line and doubled distance from the West $1/4$ corner through the $1/6$ th corner of Section 10 and established ties to monument.

August 3, 1964 – Found cast iron monument and updated ties.

June 13, 1969 – Found cast iron monument and updated ties.

July 19, 1972 – Found cast iron monument and updated ties.

June 28, 1976 – Found cast iron monument and updated ties.

June 19, 1979 – Found cast iron monument and updated ties.

August 20, 1982 – Found cast iron monument and updated ties.

December 12, 1983 – Found cast iron monument and updated ties.

July 30, 1985 – Found cast iron monument and updated ties.

July 6, 1988 – Found cast iron monument and updated ties.

August 13, 1993 – Found cast iron monument and updated ties.

March 1, 2000 – Found cast iron monument with a sign and post on the north side and established NAD 1983 (1996 Adjustment) Anoka County Project Coordinates by Static GPS methods. Updated ties.

May 26, 2010 – Found cast iron monument up $0.1'\pm$ with a sign and post on the north side and updated ties.

September 4, 2015 – Found cast iron monument up $0.1'\pm$ with a sign and post on the north side and updated ties.

May 26, 2020 – Found cast iron monument up $0.1'\pm$ with a sign and post on the north side and updated ties.

October 7, 2022 – Found cast iron monument up $0.1\pm$ and updated ties. Verified position by VRS GPS methods.