

CERTIFICATE OF LOCATION OF GOVERNMENT CORNER

County of Anoka

State of Minnesota

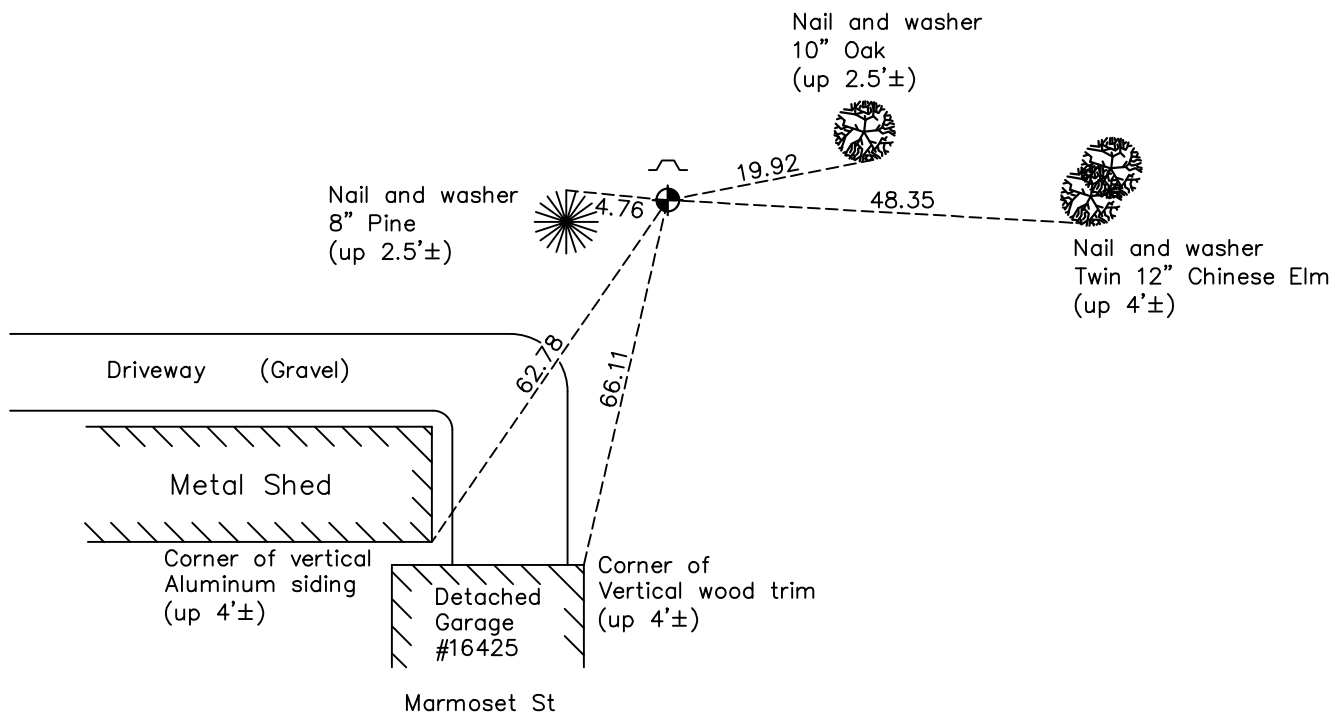
North $\frac{1}{4}$ Corner of Sec. 17 Township 32 Range 25

On the 19th day of April, 1961, the described corner was evidenced by a 1/2" iron pipe

and to perpetuate the location of said corner, at the exact location thereof, a permanent marker was placed consisting of a cast iron monument

AND on the 7th day of October, 2022, said permanent marker was found flush with a sign and post on the north side and the ties were updated

Updated reference ties are as shown below.



Revision Date
12/30/22

N.A.D. 1983 Coordinates
(1996 Adjustment)

County Project Coordinates	
Northing	<u>185762.7590</u>
Easting	<u>444906.7289</u>
Date	<u>1/03/00</u>

I hereby certify that this United States public land survey monument record is correct and complete to the best of my knowledge and belief.

David Zieglmeier Date 2/22/23

David Zieglmeier Anoka County Surveyor
Minnesota License Number 46179

HISTORY OF GOVERNMENT CORNER

Page No. 56

County of Anoka

State of Minnesota

North 1/4 Corner of Sec. 17 Township 32 Range 25

CORNER HISTORY:

May 1952 – Egan, Field and Nowak found corner location, type of monument unknown. Established ties to monument.

April 19, 1961 – Replaced 1/2" iron pipe with a cast iron monument and updated ties.

August 5, 1964 – Found cast iron monument and updated ties.

June 11, 1969 – Found cast iron monument and updated ties.

July 25, 1972 – Found cast iron monument and updated ties.

June 28, 1976 – Found cast iron monument and updated ties.

June 20, 1979 – Found cast iron monument and updated ties.

August 11, 1982 – Found cast iron monument and updated ties.

July 30, 1985 – Found cast iron monument and updated ties.

December 8, 1986 – Found cast iron monument and updated ties.

June 23, 1988 – Found cast iron monument and updated ties.

August 11, 1993 – Found cast iron monument and updated ties.

January 3, 2000 – Found cast iron monument and established NAD 1983 (1996 Adjustment) Anoka County Project Coordinates by Static GPS methods. Set a sign and post on the north side of monument and updated ties.

Date unknown – Found cast iron monument flush with the surface and updated ties.

August 13, 2015 – Found cast iron monument flush with the surface with a sign and post on the north side. Updated ties.

May 22, 2020 – Found cast iron monument flush with the surface with a sign and post on the north side. Updated ties.

October 7, 2022 – Found cast iron monument flush with the surface with a sign and post on the north side. Verified position by VRS GPS methods. Updated ties.