

CERTIFICATE OF LOCATION OF GOVERNMENT CORNER

County of Anoka

State of Minnesota

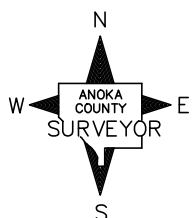
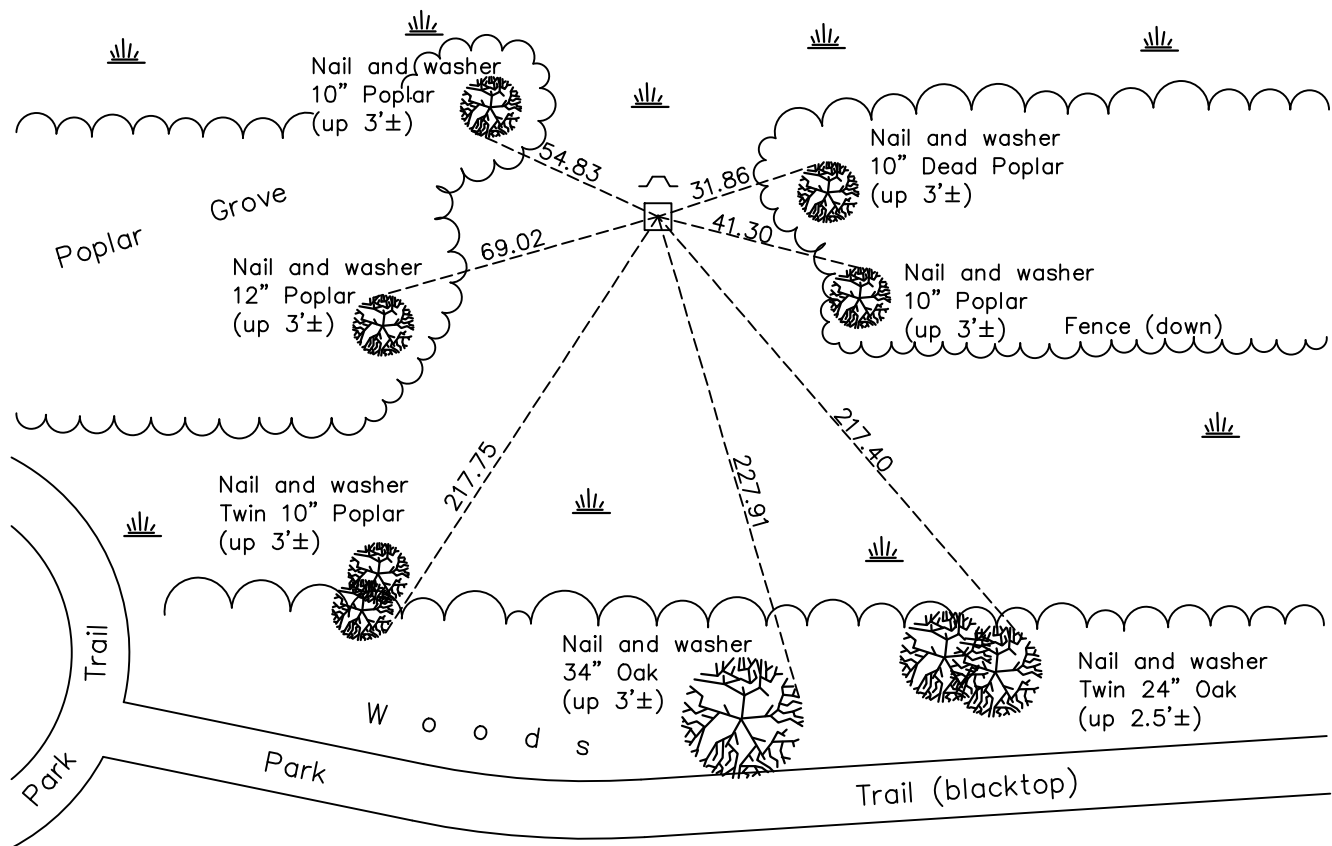
Northeast Corner of Sec. 18 Township 32 Range 25

On the 4th day of November, 1943, the described corner was evidenced by a concrete monument

and to perpetuate the location of said corner, at the exact location thereof, a permanent marker was placed consisting of the same concrete monument

AND on the 7th day of October, 2022, said permanent marker was found up 0.5'± with a 7' sign and post on the north side and the ties were updated

Updated reference ties are as shown below.



Revision Date
1/3/23

N.A.D. 1983 Coordinates
 (1996 Adjustment)

County Project Coordinates	
Northing	<u>185789.1291</u>
Easting	<u>442240.6491</u>
Date	<u>1/28/00</u>

I hereby certify that this United States public land survey monument record is correct and complete to the best of my knowledge and belief.

David Zieglmeier Date 2/22/23

David Zieglmeier Anoka County Surveyor
 Minnesota License Number 46179

HISTORY OF GOVERNMENT CORNER

Page No. 57

County of Anoka

State of Minnesota

Northeast Corner of Sec. 18 Township 32 Range 25

CORNER HISTORY:

November 4, 1943 – Cartwright found concrete monument set flush with the surface. Established ties to monument.

October 1, 1963 – Found 4" square concrete monument up 0.4'± with an angle iron on the southwest side of monument up 2'±. Updated ties.

August 7, 1964 – Found concrete monument and updated ties.

June 16, 1969 – Found concrete monument and updated ties.

August 2, 1972 – Found concrete monument and updated ties.

June 20, 1979 – Found concrete monument and updated ties.

August 12, 1982 – Found concrete monument and updated ties.

June 13, 1988 – Found concrete monument and updated ties. Set a sign and post on the north side of monument.

August 12, 1993 – Found concrete monument and updated ties.

January 28, 2000 – Found concrete monument and established NAD 1983 (1996 Adjustment) Anoka County Project Coordinates by Static GPS methods. Updated ties.

January 7, 2011 – Found concrete monument and updated ties.

September 10, 2015 – Found concrete monument with a sign and post on the north side and updated ties. Verified location of corner by VRS GPS methods.

October 19, 2020 – Found concrete monument with a sign and post on the north side and updated ties. Verified location of corner by VRS GPS methods.

October 7, 2022 – Found concrete monument up 0.5'± with a sign and post on the north side and updated ties. Verified location of corner by VRS GPS methods.