

# CERTIFICATE OF LOCATION OF GOVERNMENT CORNER

County of Anoka

State of Minnesota

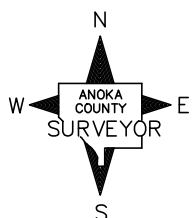
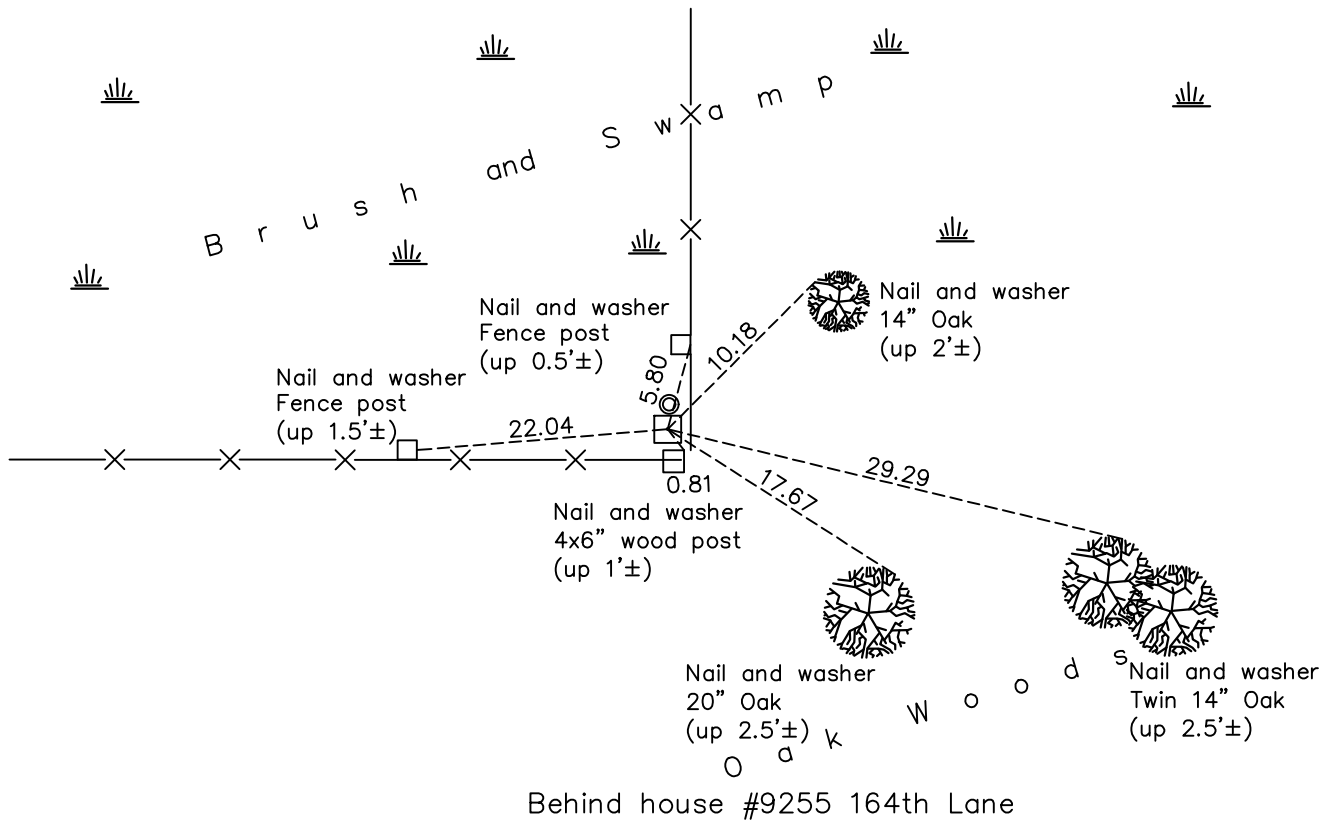
## North 1/4 Corner of Sec. 18 Township 32 Range 25

On the 4th day of November, 1943, the described corner was evidenced by a concrete monument

and to perpetuate the location of said corner, at the exact location thereof, a permanent marker was placed consisting of the same concrete monument 0.5'± north of fence corner

AND on the 7th day of October, 2022, said permanent marker was found with a pinched iron pipe on the north side and the ties were updated

Updated reference ties are as shown below.



Revision Date  
1/3/23

N.A.D. 1983 Coordinates  
 (1996 Adjustment)

County Project Coordinates	
Northing	<u>185823.0251</u>
Easting	<u>439585.6426</u>
Date	<u>1/28/00</u>

I hereby certify that this United States public land survey monument record is correct and complete to the best of my knowledge and belief.  
*David Zieglmeier* Date 2/22/23  
 David Zieglmeier Anoka County Surveyor  
 Minnesota License Number 46179

# HISTORY OF GOVERNMENT CORNER

Page No. 58

County of Anoka

State of Minnesota

## North 1/4 Corner of Sec. 18 Township 32 Range 25

### **CORNER HISTORY:**

November 4, 1943 – Cartwright found concrete monument. Established ties to monument.

October 1, 1963 – Found 4” square concrete monument flush with the surface and updated ties.

August 7, 1964 – Found concrete monument and updated ties.

June 16, 1969 – Found concrete monument and updated ties.

August 2, 1972 – Found concrete monument and updated ties.

June 29, 1976 – Found concrete monument and updated ties.

October 15, 1976 – Found 4” square concrete monument flush with the surface and updated ties.

June 20, 1979 – Found concrete monument and updated ties.

August 11, 1982 – Found concrete monument and updated ties.

July 31, 1985 – Found concrete monument and updated ties.

June 15, 1988 – Found concrete monument and updated ties.

August 23, 1993 – Found concrete monument and updated ties.

January 28, 2000 – Found concrete monument and established NAD 1983 (1996 Adjustment) Anoka County Project Coordinates by Static GPS methods. Updated ties.

June 1, 2010 – Found concrete monument with a pinched iron pipe on the north side of monument and updated ties.

November 10, 2015 – Found concrete monument with a pinched iron pipe on the north side of monument and updated ties.

May 22, 2020 – Found concrete monument with a pinched iron pipe on the north side of monument and updated ties.

October 7, 2022 – Found concrete monument with a pinched iron pipe on the north side of monument and updated ties. Verified location of corner by VRS GPS methods.