

# CERTIFICATE OF LOCATION OF GOVERNMENT CORNER

County of Anoka

State of Minnesota

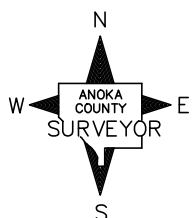
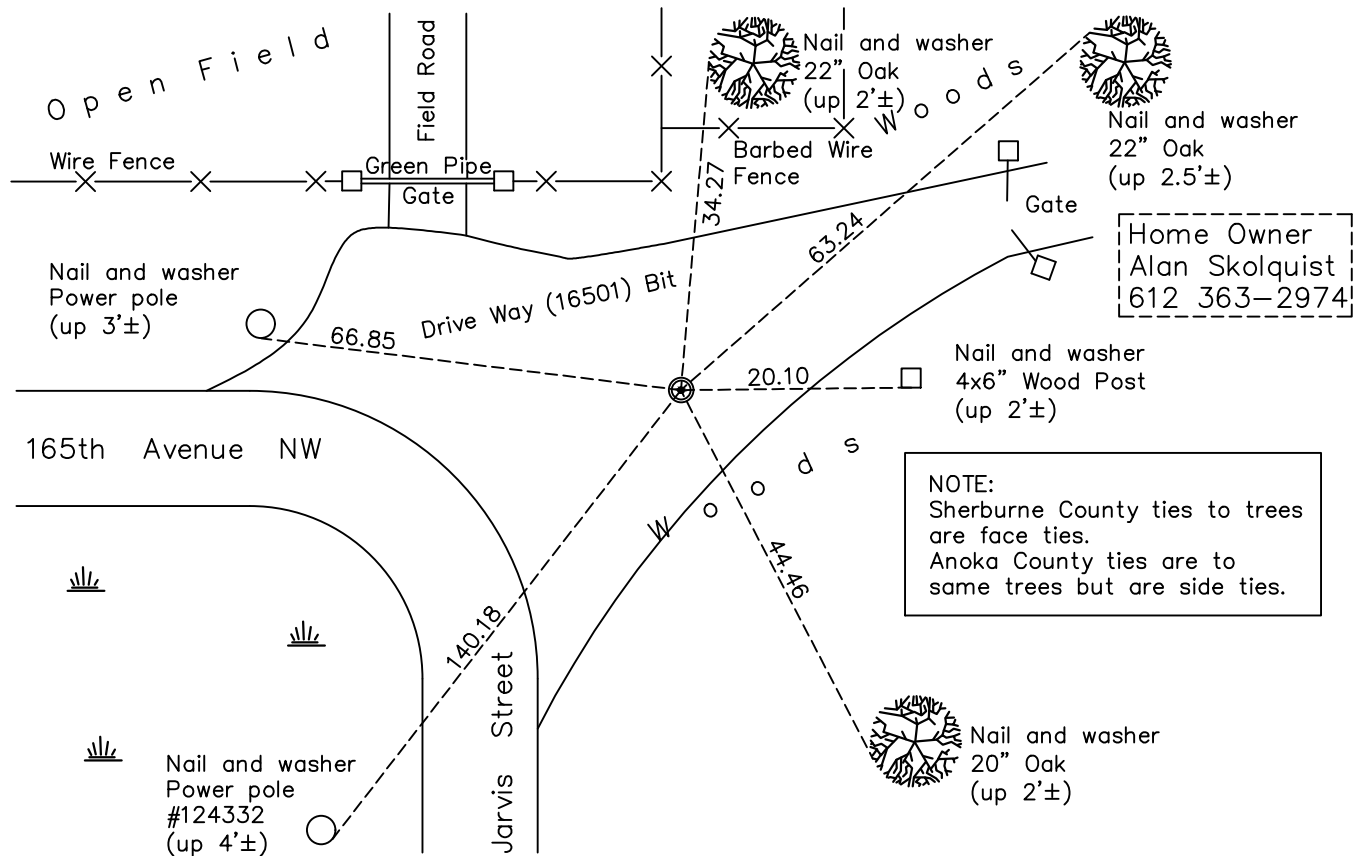
## Northwest Corner of Sec. 18 Township 32 Range 25

On the 3rd day of August, 1972, the described corner was evidenced by a granite monument

and to perpetuate the location of said corner, at the exact location thereof, a permanent marker was placed consisting of cast iron monument

AND on the 11th day of August, 2023, said permanent marker was replaced setting a 1' rebar w/ aluminum cap & punch mark, down in valve shutoff casting, in bit driveway and ties were updated

Updated reference ties are as shown below.



N.A.D. 1983 Coordinates  
(1996 Adjustment)

County Project Coordinates	
Northing	185855.3731
Easting	436823.8863
Date	1/27/00

Revision Date  
8/16/2023

I hereby certify that this United States public land survey monument record is correct and complete to the best of my knowledge and belief.  
*David Zieglmeier* Date 8/17/23  
 David Zieglmeier Anoka County Surveyor  
 Minnesota License Number 46179

# HISTORY OF GOVERNMENT CORNER

Page No. 59

County of Anoka

State of Minnesota

## Northwest Corner of Sec. 18 Township 32 Range 25

### **CORNER HISTORY:**

September 24, 1943 – Cartwright found granite monument set down 6"±. Established ties to monument.

April 17, 1961 – Found granite monument at intersection of north and east fences and updated ties. Set 1/2" iron pipe on north face of monument.

August 7, 1964 – Found granite monument and updated ties.

June 11, 1969 – Found granite monument and updated ties.

August 3, 1972 – Found cast iron monument and updated ties. Notes indicate an Isanti County monument was found. Later notes indicate a Sherburne County monument which, being on the Anoka–Sherburne County line, is more logical.

June 28, 1976 – Found cast iron monument and updated ties.

June 21, 1979 – Found cast iron monument and updated ties.

August 11, 1982 – Found cast iron monument and updated ties.

July 31, 1985 – Found cast iron monument and updated ties.

June 9, 1988 – Found Sherburne County cast iron monument and updated ties.

August 12, 1993 – Found cast iron monument and updated ties.

January 27, 2000 – Found cast iron monument and established NAD 1983 (1996 Adjustment) Anoka County Project Coordinates by Static GPS methods. Updated ties.

April 28, 2010 – Found Sherburne County cast iron monument against an 8" dia. corner fence post and updated ties.

July 20, 2015 – Found Sherburne County cast iron monument against an 8" dia. corner fence post and updated ties. Verified location of corner by VRS GPS methods.

October 6, 2022 – Found Sherburne County Rebar rod down 0.5'± in covered tube and updated ties. Verified location of corner by VRS GPS methods.

August 11, 2023 – Removed found temporary marker. Set 1' rebar w/ aluminum cap and punch mark down 0.3' ±, in valve shutoff casting set in driveway bit, using RTK GPS method. Updated ties after resetting monument.