

CERTIFICATE OF LOCATION OF GOVERNMENT CORNER

County of Anoka

State of Minnesota

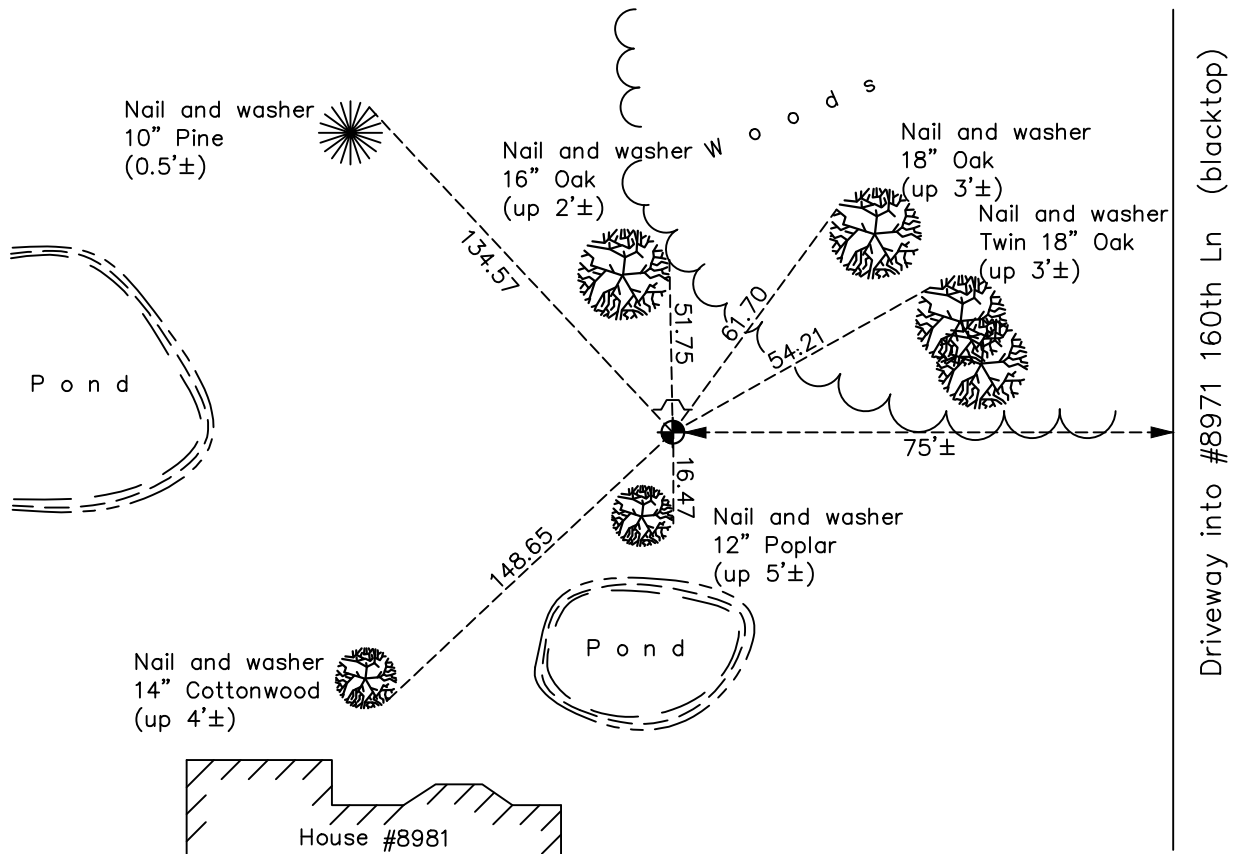
East 1/4 Corner of Sec. 18 Township 32 Range 25

On the 16th day of June, 1969, the described corner was evidenced by a concrete monument

and to perpetuate the location of said corner, at the exact location thereof, a permanent marker was placed consisting of a cast iron monument

AND on the 6th day of October, 2022, said permanent marker was found down 0.6'± with a sign and post on the north side and the ties were updated

Updated reference ties are as shown below.



Revision Date
1/3/23

N.A.D. 1983 Coordinates
(1996 Adjustment)

County Project Coordinates	
Northing	<u>183185.9897</u>
Easting	<u>442229.1183</u>
Date	<u>4/25/00</u>

I hereby certify that this United States public land survey monument record is correct and complete to the best of my knowledge and belief.

David Zieglmeier Date 2/22/23

David Zieglmeier Anoka County Surveyor
Minnesota License Number 46179

HISTORY OF GOVERNMENT CORNER

Page No. 61

County of Anoka

State of Minnesota

East 1/4 Corner of Sec. 18 Township 32 Range 25

CORNER HISTORY:

November 4, 1943 – Cartwright found concrete monument set flush with the surface. Established ties to monument.

April 18, 1961 – Found concrete monument with top 0.3' broken off and updated ties. Set 1/2" iron pipes on the north and south side of monument.

August 7, 1964 – Found concrete monument and updated ties.

June 16, 1969 – Replaced broken concrete monument with a cast iron monument set flush with the surface. Updated ties.

August 2, 1972 – Found cast iron monument and updated ties.

June 29, 1976 – Found cast iron monument and updated ties.

June 20, 1979 – Found cast iron monument and updated ties.

August 12, 1982 – Found cast iron monument and updated ties.

June 9, 1988 – Found cast iron monument and updated ties.

August 12, 1993 – Found cast iron monument with a sign and post on the north side and updated ties.

May 9, 1996 – Found cast iron monument with a sign and post on the north side and updated ties.

April 25, 2000– Found cast iron monument with a sign and post on the north side and established NAD 1983 (1996 Adjustment) Anoka County Project Coordinates by Static GPS methods. Updated ties.

May 4, 2010 – Found cast iron monument down 0.6'± with a sign and post on the north side and updated ties.

September 16, 2015 – Found cast iron monument down 0.6'± with a sign and post on the north side and updated ties. Verified location of corner by VRS GPS methods.

May 21, 2020 – Found cast iron monument down 0.6'± with a sign and post on the north side and updated ties. Verified location of corner by VRS GPS methods.

October 6, 2022 – Found cast iron monument down 0.6'± with a sign and post on the north side and updated ties. Verified location of corner by VRS GPS methods.