

CERTIFICATE OF LOCATION OF GOVERNMENT CORNER

County of Anoka

State of Minnesota

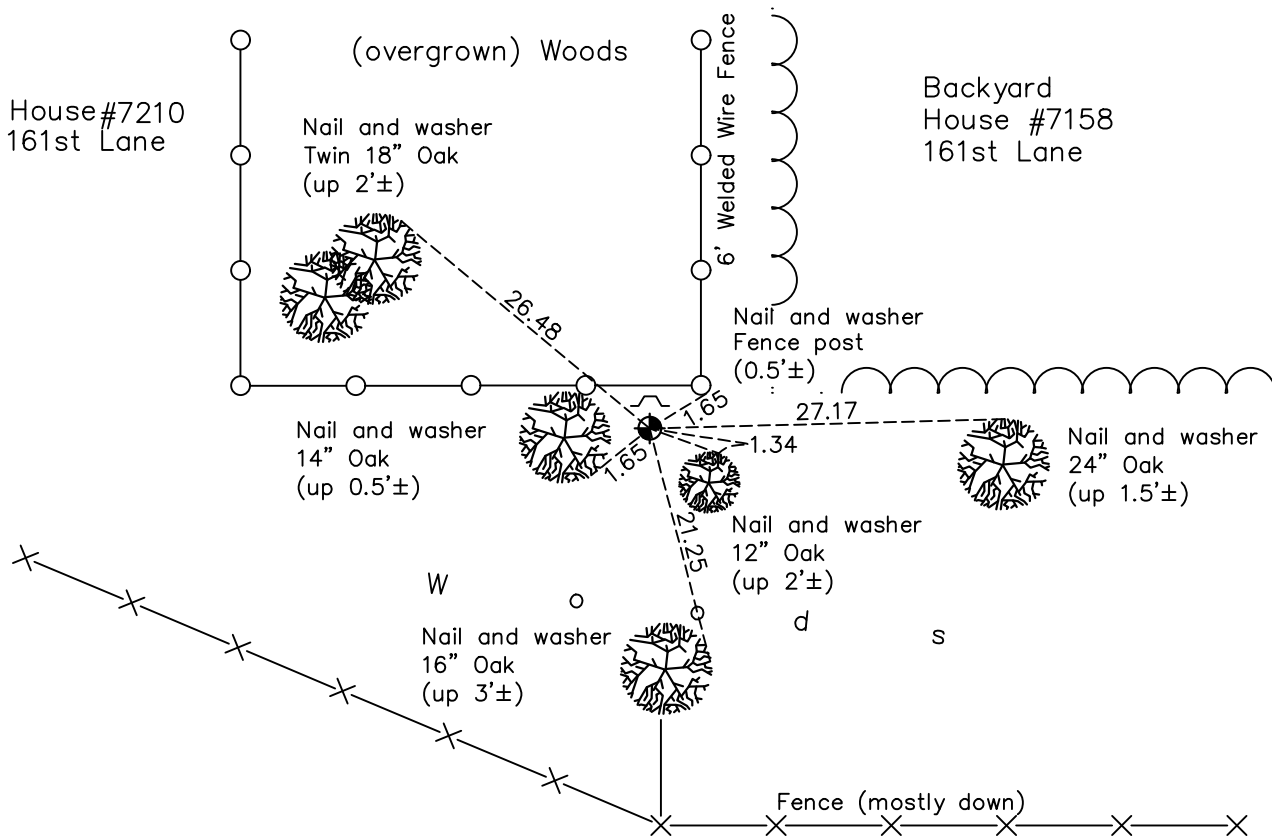
West 1/4 Corner of Sec. 15 Township 32 Range 25

On the 3rd day of August, 1964, the described corner was evidenced by a 3/4" axle shaft

and to perpetuate the location of said corner, at the exact location thereof, a permanent marker was placed consisting of a cast iron monument

AND on the 30th day of September, 2022, said permanent marker was found flush with a sign and post on the north side and the ties were updated

Updated reference ties are as shown below.



Revision Date
1/3/23

N.A.D. 1983 Coordinates
 (1996 Adjustment)

County Project Coordinates	
Northing	183028.2382
Easting	452818.7849
Date	4/21/00

I hereby certify that this United States public land survey monument record is correct and complete to the best of my knowledge and belief.

David Zieglmeier Date 2/22/23

David Zieglmeier Anoka County Surveyor
 Minnesota License Number 46179

HISTORY OF GOVERNMENT CORNER

Page No. 63

County of Anoka

State of Minnesota

West 1/4 Corner of Sec. 15 Township 32 Range 25

CORNER HISTORY:

April 22, 1963 – Found 3/4" axle shaft up 1'±. Established ties to axle shaft.

August 3, 1964 – Replaced axle shaft with a cast iron monument and updated ties.

June 13, 1969 – Found cast iron monument and updated ties.

August 17, 1972 – Found cast iron monument and updated ties.

June 30, 1976 – Found cast iron monument and updated ties.

June 27, 1979 – Found cast iron monument and updated ties.

August 16, 1982 – Found cast iron monument and updated ties.

July 17, 1985 – Found cast iron monument and updated ties.

December 9, 1986 – Found cast iron monument and updated ties.

July 6, 1988 – Found cast iron monument and updated ties.

August 13, 1993 – Found cast iron monument and updated ties.

April 21, 2000 – Found cast iron monument with a sign and post on the north side and established NAD 1983 (1996 Adjustment) Anoka County Project Coordinates by Static GPS methods. Updated ties.

May 27, 2010 – Found cast iron monument flush with the surface with a sign and post on the north side. Updated ties.

October 5, 2015 – Found cast iron monument flush with the surface with a sign and post on the north side. Updated ties.

May 26, 2020 – Found cast iron monument flush with the surface with a sign and post on the north side. Updated ties.

September 30, 2022 – Found cast iron monument flush with the surface, verified location of corner by VRS GPS method and the ties were updated.