

CERTIFICATE OF LOCATION OF GOVERNMENT CORNER

County of Anoka

State of Minnesota

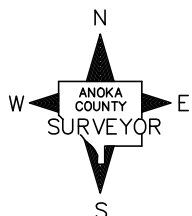
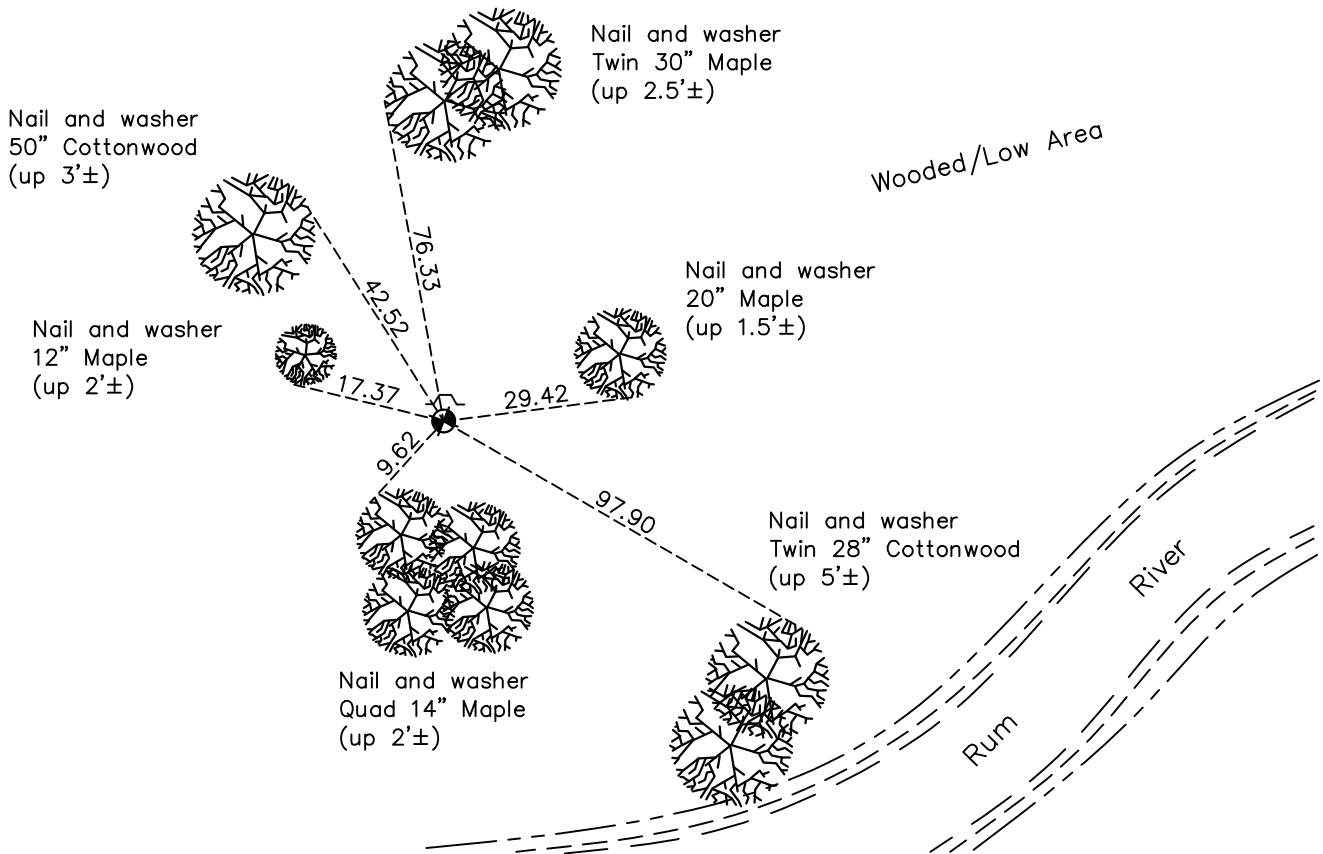
Witness Corner of Sec. 24 Township 32 Range 25
(On north line of section)

On the 8th day of July, 1963, the described corner was evidenced by area resurvey

and to perpetuate the location of said corner, at the exact location thereof, a permanent marker was placed consisting of a cast iron monument

AND on the 18th day of October, 2022, said permanent marker was found up 0.1' with a sign and post on the north side and the ties were updated

Updated reference ties are as shown below.



Revision Date
1/4/23

N.A.D. 1983 Coordinates
 (1996 Adjustment)

County Project Coordinates	
Northing	<u>180402.1480</u>
Easting	<u>468277.8472</u>
Date	<u>3/29/00</u>

I hereby certify that this United States public land survey monument record is correct and complete to the best of my knowledge and belief.
David Zieglmeier Date 2/22/23
 David Zieglmeier Anoka County Surveyor
 Minnesota License Number 46179

HISTORY OF GOVERNMENT CORNER

Page No. 67

County of Anoka

State of Minnesota

Witness Corner of Sec. 24 Township 32 Range 25
(On north line of section)

CORNER HISTORY:

July 8, 1963 – Set cast iron monument flush with the surface using area resurvey and established ties to monument.

August 11, 1964 – Found cast iron monument and updated ties.

July 1, 1969 – Found cast iron monument and updated ties.

August 16, 1972 – Found cast iron monument and updated ties.

June 30, 1976 – Found cast iron monument flush with the surface and updated ties.

July 5, 1979 – Found cast iron monument and updated ties.

August 18, 1982 – Found cast iron monument and updated ties.

July 29, 1985 – Found cast iron monument and updated ties.

July 15, 1988 – Found cast iron monument and updated ties.

August 24, 1993 – Found cast iron monument and updated ties.

March 29, 2000 – Found cast iron monument with a sign and post on the north side and established NAD 1983 (1996 Adjustment) Anoka County Project Coordinates by Static GPS methods. Updated ties.

June 4, 2010 – Found cast iron monument up 0.1'± with a sign and post on the north side and updated ties.

October 14, 2015 – Found cast iron monument up 0.1'± with a sign and post on the north side and updated ties.

October 9, 2020 – Found cast iron monument up 0.1'± with a sign and post on the north side and updated ties.

October 18, 2022 – Found cast iron monument up 0.1'±, verified location of corner by VRS GPS method and the ties were updated.