

# CERTIFICATE OF LOCATION OF GOVERNMENT CORNER

County of Anoka

State of Minnesota

## Witness Corner of Sec. 24 Township 32 Range 25

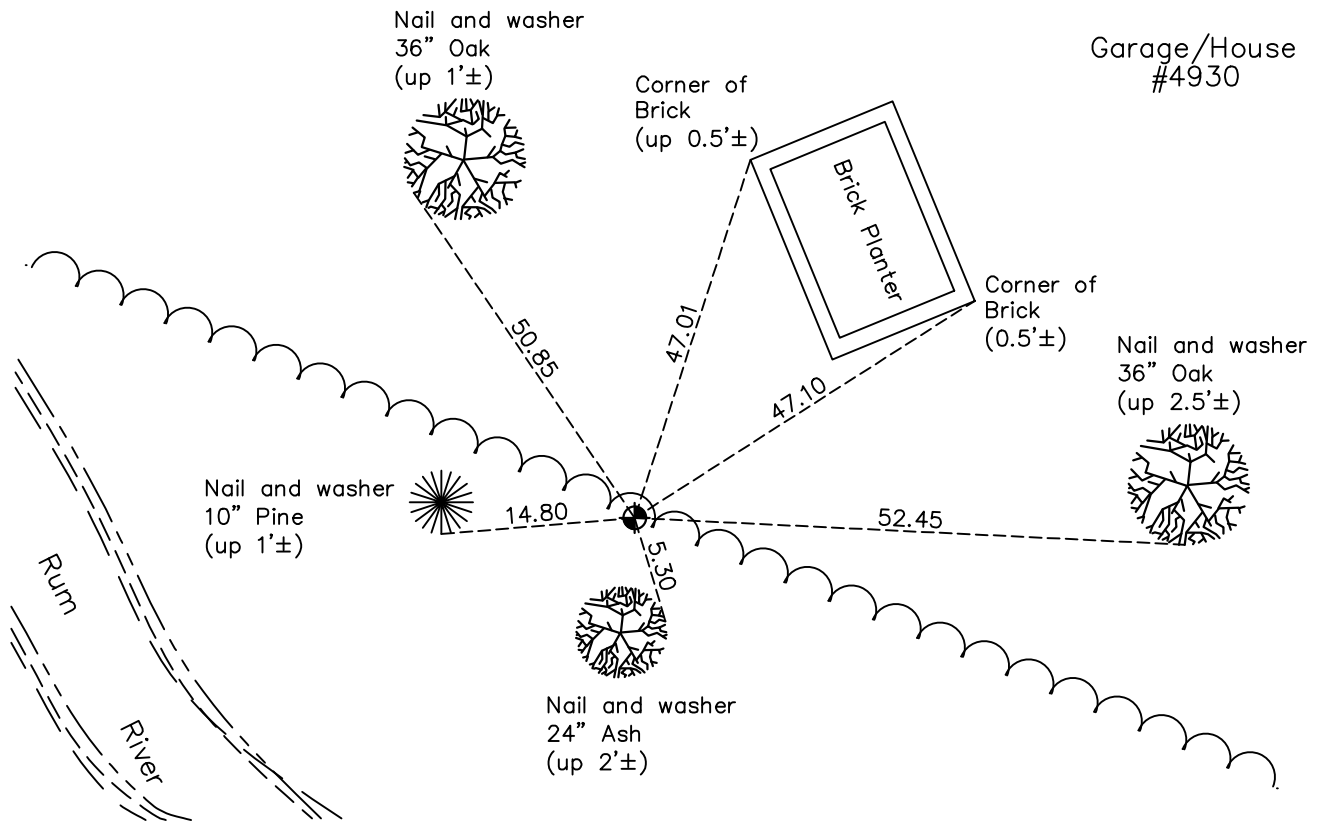
(On north line of section)

On the 8th day of July, 1963, the described corner was evidenced by area resurvey

and to perpetuate the location of said corner, at the exact location thereof, a permanent marker was placed consisting of a cast iron monument

AND on the 17th day of October, 2022, said permanent marker was found flush and the ties were updated

Updated reference ties are as shown below.



N  
W ANOKA COUNTY SURVEYOR E  
S

Revision Date  
**1/4/23**

N.A.D. 1983 Coordinates  
(1996 Adjustment)

County Project Coordinates	
Northing	180400.3073
Easting	467540.7475
Date	4/19/00

I hereby certify that this United States public land survey monument record is correct and complete to the best of my knowledge and belief.

*David Zieglmeier* Date 2/22/23

David Zieglmeier Anoka County Surveyor  
Minnesota License Number 46179

# HISTORY OF GOVERNMENT CORNER

Page No. 68

County of Anoka

State of Minnesota

Witness Corner of Sec. 24 Township 32 Range 25  
(On north line of section)

## **CORNER HISTORY:**

July 8, 1963 – Set cast iron monument flush with the surface and 62.00 feet east of Meander Corner No. 21 using area resurvey . Established ties to monument.

August 11, 1964 – Found cast iron monument and updated ties.

June 18, 1969 – Found cast iron monument flush with the surface and updated ties.

August 16, 1972 – Found cast iron monument and updated ties.

June 28, 1976 – Found cast iron monument and updated ties.

July 6, 1979 – Found cast iron monument and updated ties.

August 18, 1982 – Found cast iron monument and updated ties.

July 29, 1985 – Found cast iron monument and updated ties.

July 14, 1988 – Found cast iron monument and updated ties.

April 19, 2000 – Found cast iron monument and established NAD 1983 (1996 Adjustment) Anoka County Project Coordinates by Static GPS methods. Updated ties.

June 2010 – Found cast iron monument and updated ties.

October 14, 2015 – Found cast iron monument flush with the surface and updated ties.

May 1, 2020 – Found cast iron monument flush with the surface and updated ties.

October 17, 2022 – Found cast iron monument flush with the surface and updated ties. Verified location of corner by VRS GPS methods.