

CERTIFICATE OF LOCATION OF GOVERNMENT CORNER

County of Anoka

State of Minnesota

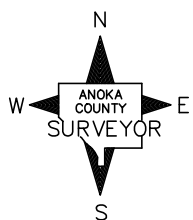
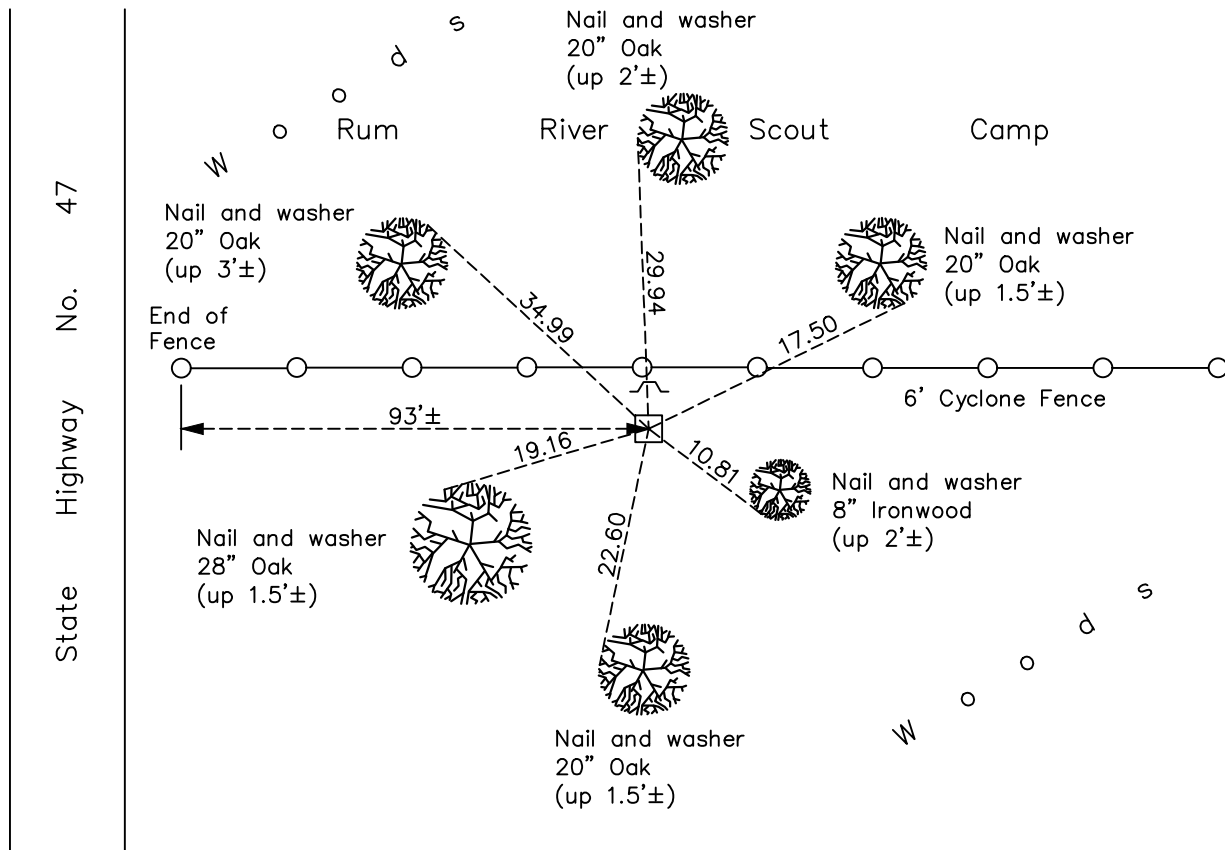
Southwest Corner of Sec. 13 Township 32 Range 25

On the 27th day of August, 1959, the described corner was evidenced by a granite monument

and to perpetuate the location of said corner, at the exact location thereof, a permanent marker was placed consisting of the same granite monument

AND on the 30th day of September, 2022, said permanent marker was found up 0.7'± with a sign and post on the north side and the ties were updated

Updated reference ties are as shown below.



Revision Date
1/4/23

N.A.D. 1983 Coordinates
 (1996 Adjustment)

County Project Coordinates	
Northing	180385.7541
Easting	463379.8173
Date	1/11/00

I hereby certify that this United States public land survey monument record is correct and complete to the best of my knowledge and belief.

David Zieglmeier Date 2/22/23

David Zieglmeier Anoka County Surveyor
 Minnesota License Number 46179

HISTORY OF GOVERNMENT CORNER

Page No. 71

County of Anoka

State of Minnesota

Southwest Corner of Sec. 13 Township 32 Range 25

CORNER HISTORY:

Date unknown – Cartwright found granite monument set up 6". Established ties to monument.

August 27, 1959 – Found granite monument with "X" set up 1'± and updated ties.

August 11, 1964 – Found granite monument and updated ties.

June 24, 1969 – Found granite monument and updated ties.

August 8, 1972 – Found granite monument and updated ties.

June 21, 1979 – Found granite monument and updated ties.

August 19, 1982 – Found granite monument and updated ties.

July 23, 1985 – Found granite monument and updated ties.

July 11, 1988 – Found granite monument 1'± south of fence and updated ties.

August 10, 1993 – Found granite monument and updated ties.

January 11, 2000 – Found granite monument with a sign and post on the north side and established NAD 1983 (1996 Adjustment) Anoka County Project Coordinates by Static GPS methods. Updated ties.

October 15, 2015 – Found granite monument up 0.7'± with a sign and post on the north side and updated ties.

April 24, 2020 – Found granite monument up 0.7'± with a sign and post on the north side and updated ties.

September 30, 2022 – Found granite monument up 0.7'± with a sign and post on the north side and updated ties. Verified location of corner by VRS GPS methods.