

CERTIFICATE OF LOCATION OF GOVERNMENT CORNER

County of Anoka

State of Minnesota

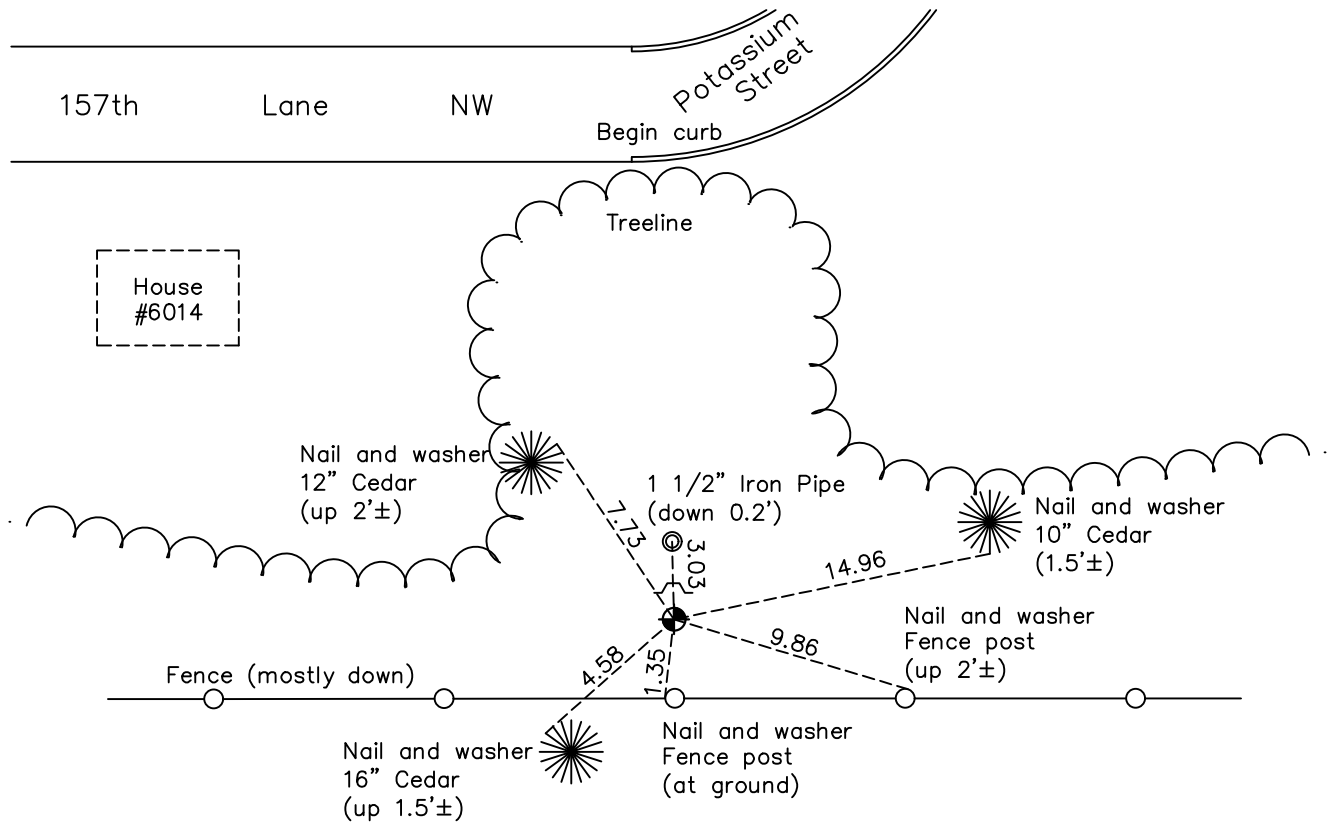
North 1/4 Corner of Sec. 23 Township 32 Range 25

On the 27th day of July, 1961, the described corner was evidenced by a 1/2" iron pipe

and to perpetuate the location of said corner, at the exact location thereof, a permanent marker was placed consisting of a cast iron monument

AND on the 5th day of October, 2022, said permanent marker was found flush with a sign and post on the north side and the ties were updated

Updated reference ties are as shown below.



Revision Date
 1/4/23

N.A.D. 1983 Coordinates
 (1996 Adjustment)

County Project Coordinates	
Northing	180386.6679
Easting	460724.8966
Date	12/29/99

I hereby certify that this United States public land survey monument record is correct and complete to the best of my knowledge and belief.
David Zieglmeier Date 2/22/23
 David Zieglmeier Anoka County Surveyor
 Minnesota License Number 46179

HISTORY OF GOVERNMENT CORNER

Page No. 72

County of Anoka

State of Minnesota

North 1/4 Corner of Sec. 23 Township 32 Range 25

CORNER HISTORY:

July 27, 1961 – Found 1/2" iron pipe north of east–west fence. Replaced it with a cast iron monument up 0.1'± and established ties to monument.

August 6, 1964 – Found cast iron monument and updated ties.

July 31, 1969 – Found cast iron monument and updated ties.

August 15, 1972 – Found cast iron monument and updated ties.

July 1, 1976 – Found cast iron monument and updated ties.

June 21, 1979 – Found cast iron monument and updated ties.

August 19, 1982 – Found cast iron monument and updated ties.

July 29, 1985 – Found cast iron monument and updated ties.

July 11, 1988 – Found cast iron monument and updated ties.

August 16, 1993 – Found cast iron monument and updated ties.

December 29, 1999 – Found cast iron monument with a sign and post on the north side and established NAD 1983 (1996 Adjustment) Anoka County Project Coordinates by Static GPS methods. Updated ties.

April 19, 2010 – Found cast iron monument flush with the surface with a sign and post on the north side and updated ties.

October 15, 2015 – Found cast iron monument flush with the surface with a sign and post on the north side and updated ties.

April 24, 2020 – Found cast iron monument flush with the surface with a sign and post on the north side and updated ties.

October 5, 2022 – Found cast iron monument flush with the surface, verified location of corner by VRS GPS method and the ties were updated.