

# CERTIFICATE OF LOCATION OF GOVERNMENT CORNER

County of Anoka

State of Minnesota

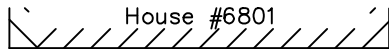
## South 1/4 Corner of Sec. 15 Township 32 Range 25

On the 6th day of October, 1961, the described corner was evidenced by area resurvey

and to perpetuate the location of said corner, at the exact location thereof, a permanent marker was placed consisting of a cast iron monument

AND on the 30th day of September, 2022, said permanent marker was found down 0.1'± and the ties were updated

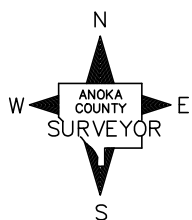
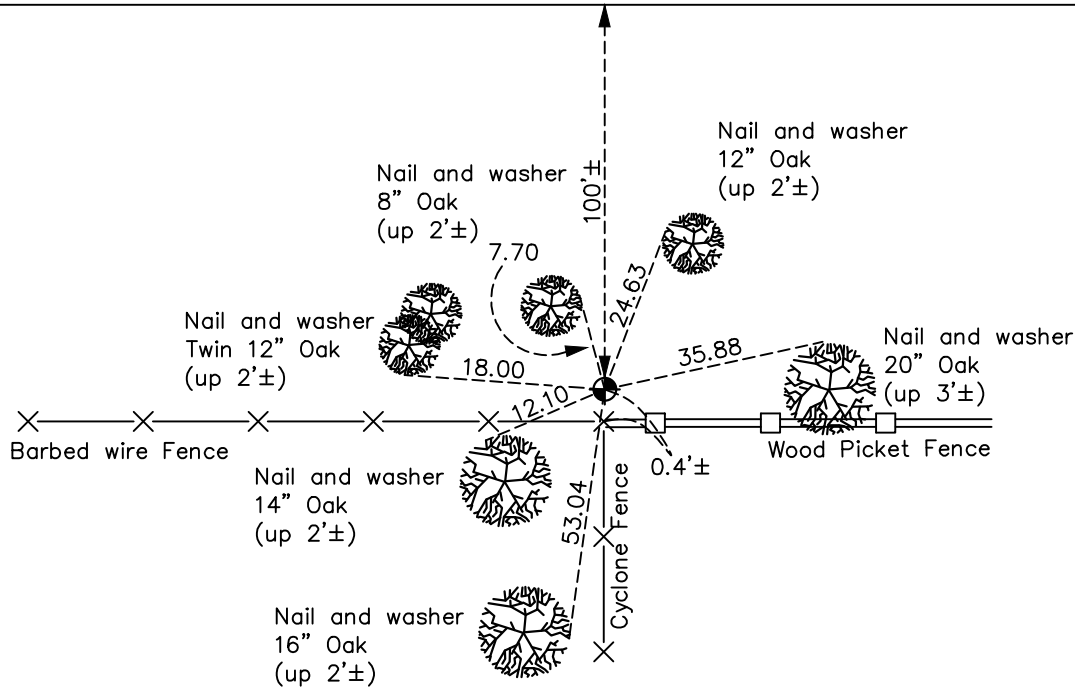
Updated reference ties are as shown below.



157th

Lane

NW



Revision Date

1/4/23

N.A.D. 1983 Coordinates  
(1996 Adjustment)

County Project Coordinates	
Northing	180370.5623
Easting	455415.1275
Date	4/18/00

I hereby certify that this United States public land survey monument record is correct and complete to the best of my knowledge and belief.

*David Zieglmeier* Date 2/22/23

David Zieglmeier Anoka County Surveyor  
Minnesota License Number 46179

# HISTORY OF GOVERNMENT CORNER

Page No. 74

County of Anoka

State of Minnesota

## South 1/4 Corner of Sec. 15 Township 32 Range 25

### **CORNER HISTORY:**

October 6, 1961 – Set cast iron monument using an old survey distance from the north of 5299.14 feet and on a fence line to the south. Established ties to monument.

August 4, 1964 – Found cast iron monument and updated ties.

June 13, 1969 – Found cast iron monument and updated ties.

July 26, 1972 – Found cast iron monument and updated ties.

July 1, 1976 – Found cast iron monument and updated ties.

June 21, 1979 – Found cast iron monument and updated ties.

August 18, 1982 – Found cast iron monument and updated ties.

July 29, 1985 – Found cast iron monument and updated ties.

June 16, 1988 – Found cast iron monument 0.5'± north of fence corner and updated ties.

August 13, 1993 – Found cast iron monument and updated ties.

April 18, 2000 – Found cast iron monument and established NAD 1983 (1996 Adjustment) Anoka County Project Coordinates by Static GPS methods. Updated ties.

April 2010 – Found cast iron monument and updated ties.

September 9, 2015 – Found cast iron monument and updated ties.

April 24, 2020 – Found cast iron monument and updated ties.

September 30, 2022 – Found cast iron monument down 0.1'± and updated ties. Verified location of corner by VRS GPS methods.