

CERTIFICATE OF LOCATION OF GOVERNMENT CORNER

County of Anoka

State of Minnesota

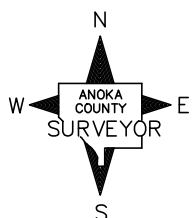
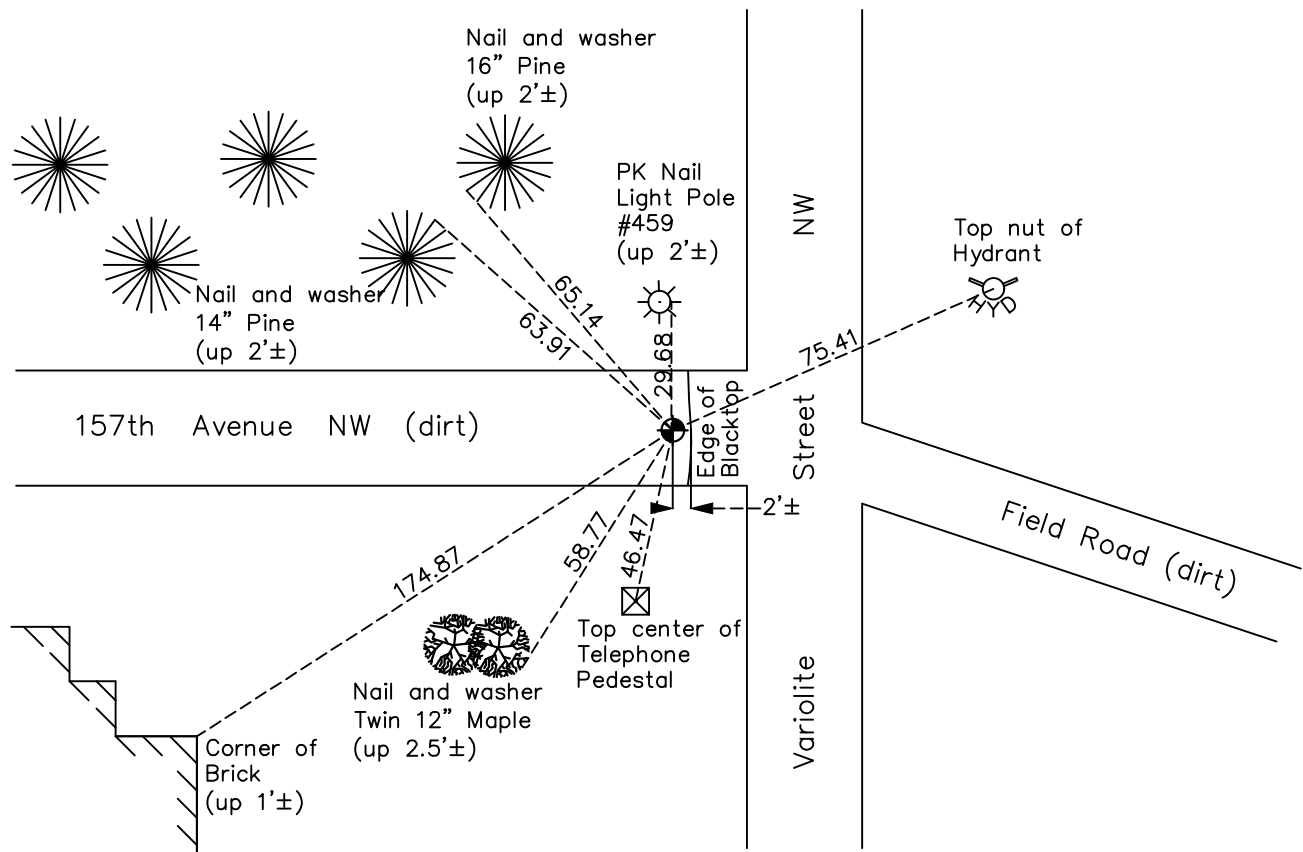
South 1/4 Corner of Sec. 16 Township 32 Range 25

On the 17th day of August, 1961, the described corner was evidenced by area resurvey

and to perpetuate the location of said corner, at the exact location thereof, a permanent marker was placed consisting of a cast iron monument

AND on the 28th day of September, 2022, said permanent marker was found down 0.3'± and the ties were updated.

Updated reference ties are as shown below.



Revision Date
 1/4/23

N.A.D. 1983 Coordinates
 (1996 Adjustment)

County Project Coordinates	
Northing	180415.1469
Easting	450140.5945
Date	12/22/99

I hereby certify that this United States public land survey monument record is correct and complete to the best of my knowledge and belief.
David Zieglmeier Date 2/22/23
 David Zieglmeier Anoka County Surveyor
 Minnesota License Number 46179

HISTORY OF GOVERNMENT CORNER

Page No. 76

County of Anoka

State of Minnesota

South 1/4 Corner of Sec. 16 Township 32 Range 25

CORNER HISTORY:

August 17, 1961 – Set cast iron monument down $0.8' \pm$ in centerline of dirt road a straight line and equal distance between the SW corner and the SE corner of Section 16 and established ties to monument.

August 5, 1964 – Found cast iron monument $8' \pm$ north of centerline of road to west and updated ties.

June 13, 1969 – Found cast iron monument and updated ties.

July 26, 1972 – Found cast iron monument and updated ties.

July 1, 1976 – Found cast iron monument and updated ties.

June 21, 1979 – Found cast iron monument and updated ties.

August 19, 1982 – Found cast iron monument and updated ties.

July 27, 1983 – Set cast iron monument after road construction and set P.K. nails 2.00' north and east. Updated ties.

June 7, 1988 – Found cast iron monument and updated ties.

August 11, 1993 – Found cast iron monument and updated ties.

December 22, 1999 – Found cast iron monument and established NAD 1983 (1996 Adjustment) Anoka County Project Coordinates by Static GPS methods. Updated ties.

April 9, 2010 – Found cast iron monument and updated ties. Monument is $8' \pm$ east of edge of blacktop.

September 4, 2015 – Found cast iron monument and updated ties. Verified location of corner by VRS GPS methods.

April 17, 2020 – Found cast iron monument and updated ties.

July 23, 2020 – Set construction ties and cast iron monument pulled for construction

December 3, 2020 – Reset with cast iron monument after road construction and updated ties.

September 28, 2022 – Found cast iron monument down $0.3' \pm$ and updated ties. Verified location of corner by VRS GPS methods.