

# CERTIFICATE OF LOCATION OF GOVERNMENT CORNER

County of Anoka

State of Minnesota

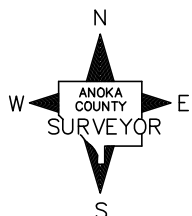
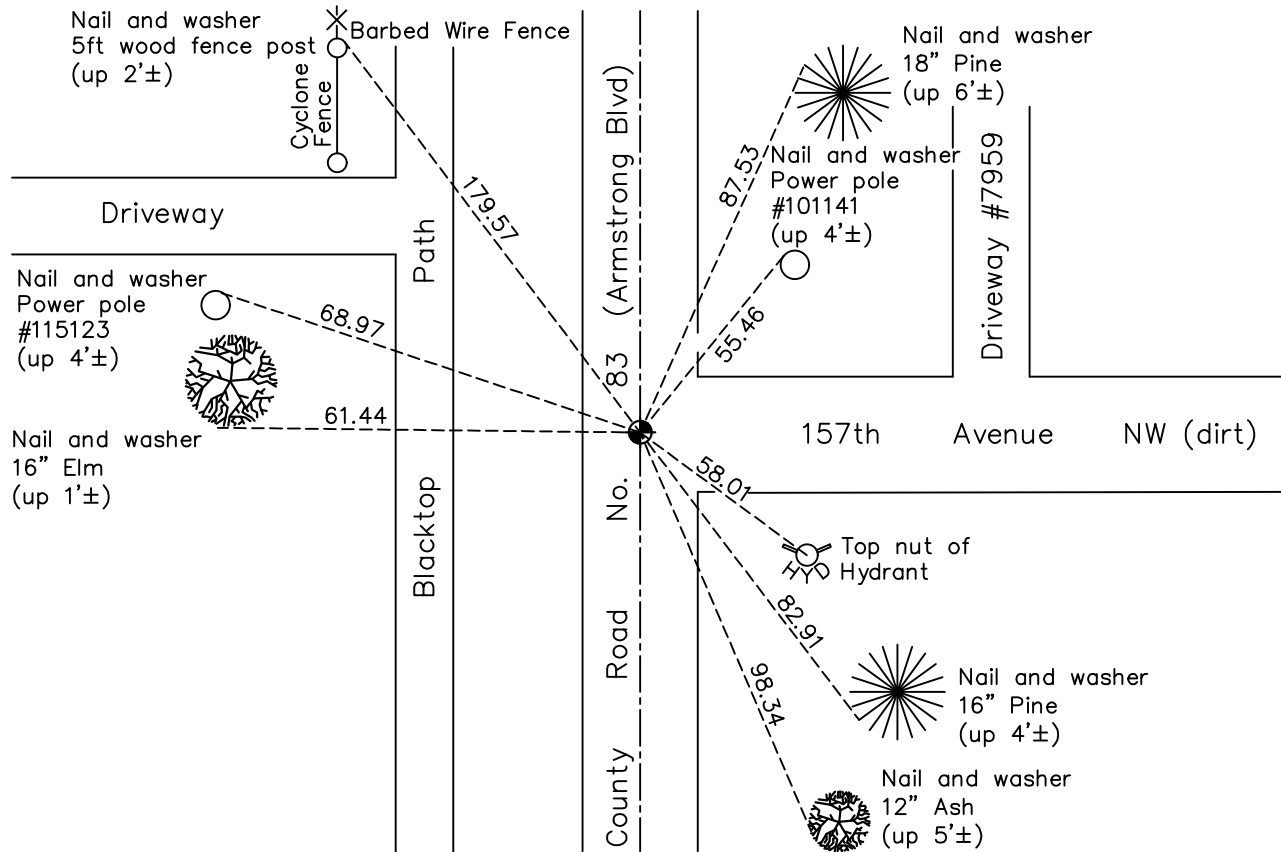
## Southeast Corner of Sec. 17 Township 32 Range 25

On the 29th day of July, 1969, the described corner was evidenced by a 1/2" iron pipe

and to perpetuate the location of said corner, at the exact location thereof, a permanent marker was placed consisting of a cast iron monument

AND on the 6th day of October, 2022, said permanent marker was found flush to surface, on the centerline and the ties were updated

Updated reference ties are as shown below.



Revision Date  
1/4/23

N.A.D. 1983 Coordinates  
(1996 Adjustment)

| County Project Coordinates |                    |
|----------------------------|--------------------|
| Northing                   | <u>180437.1167</u> |
| Easting                    | <u>447501.5205</u> |
| Date                       | <u>2/01/00</u>     |

I hereby certify that this United States public land survey monument record is correct and complete to the best of my knowledge and belief.

*David Zieglmeier* Date 2/22/23

David Zieglmeier Anoka County Surveyor  
Minnesota License Number 46179

# HISTORY OF GOVERNMENT CORNER

Page No. 77

County of Anoka

State of Minnesota

## Southeast Corner of Sec. 17 Township 32 Range 25

### **CORNER HISTORY:**

May 1952 – Egan, Field and Nowak found corner, does not specify type of monument, and established ties to monument.

April 18, 1961 – Found 1/2" iron pipe down 0.1'± and updated ties.

August 5, 1964 – Found 1/2" iron pipe down 0.1'± and updated ties.

June 13, 1969 – Found 1/2" iron pipe down 0.1'± and 2'± west of centerline. Set P.K. nails 2.00' north and east of iron pipe. Updated ties.

July 29, 1969 – Replaced 1/2" iron pipe down 0.1'± with a cast iron monument set flush with the surface. P.K. nails 2.00' north and east of monument. Updated ties.

July 26, 1972 – Found cast iron monument and updated ties.

July 1, 1976 – Found cast iron monument and updated ties.

June 21, 1979 – Found cast iron monument and updated ties.

August 19, 1982 – Found cast iron monument and updated ties.

July 19, 1985 – Found cast iron monument and updated ties.

June 7, 1988 – Found cast iron monument and updated ties.

June 14, 1988 – Set construction ties prior to road construction.

June 22, 1989 – Set cast iron monument after road construction using construction ties.

August 9, 1993 – Found cast iron monument and updated ties.

February 1, 2000 – Found cast iron monument and established NAD 1983 (1996 Adjustment) Anoka County Project Coordinates by Static GPS methods. Updated ties.

April 9, 2010 – Found cast iron monument and updated ties.

September 9, 2015 – Found cast iron monument 1.5'± west of centerline and updated ties.

June 29, 2016 – Set construction ties and removed cast iron monument prior to road construction. Verified location of corner by VRS GPS methods. Updated ties.

November 16, 2016 – Set cast iron monument after road construction using construction ties. Verified location of corner by Static GPS methods. Updated ties.

April 21, 2020 – Found cast iron monument and updated ties. Verified position of corner by VRS GPS method.

# HISTORY OF GOVERNMENT CORNER

Page No. 77

County of Anoka

State of Minnesota

Southeast Corner of Sec. 17 Township 32 Range 25

## **CORNER HISTORY:**

October 6, 2022 – Found cast iron monument flush and updated ties. Verified position of corner by VRS GPS method.