

CERTIFICATE OF LOCATION OF GOVERNMENT CORNER

County of Anoka

State of Minnesota

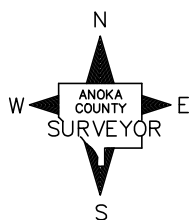
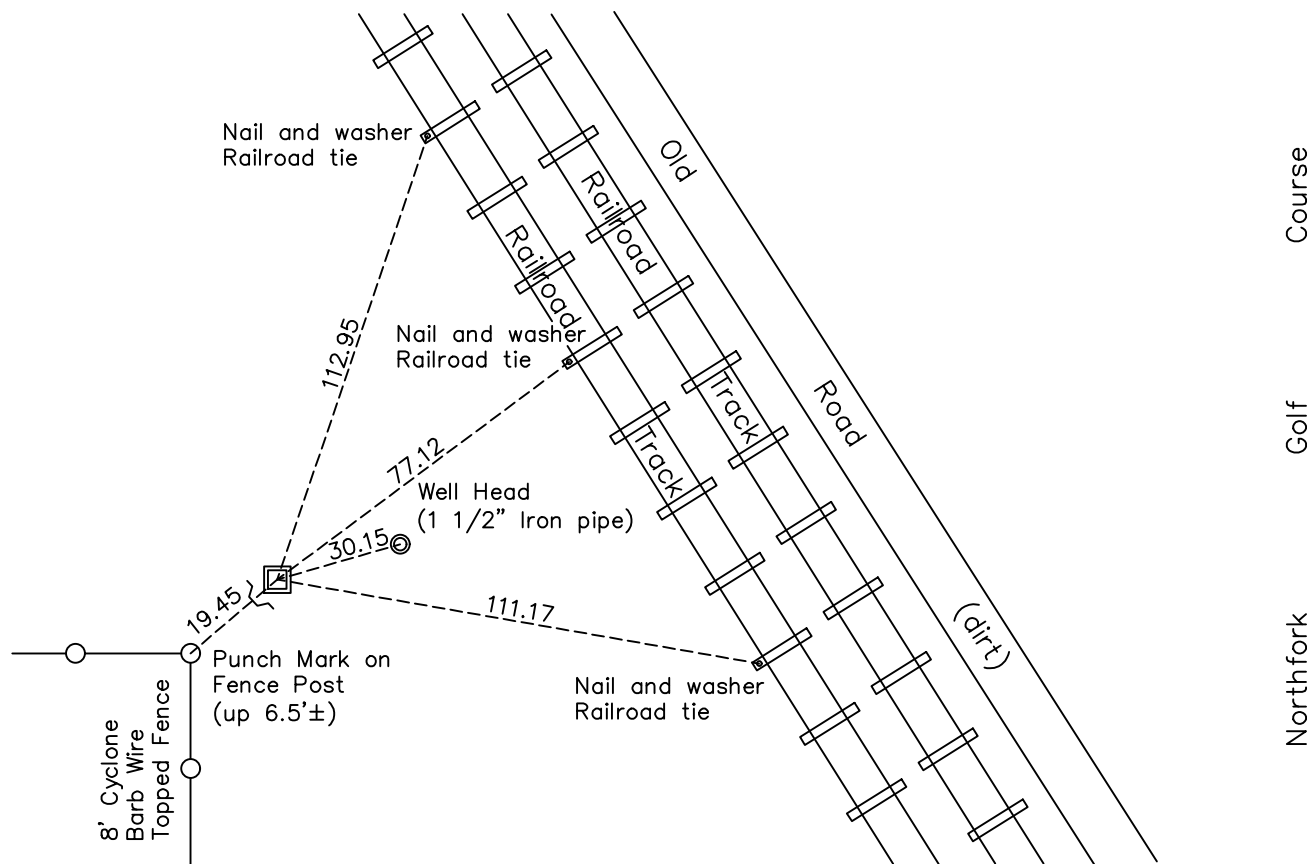
Northwest Corner of Sec. 19 Township 32 Range 25

On the 17th day of April, 1961, the described corner was evidenced by a 1/2" iron pipe

and to perpetuate the location of said corner, at the exact location thereof, a permanent marker was placed consisting of a cast iron monument found June 20, 1969

AND on the 2nd day of June, 2023, said permanent marker was found flush in a dirt mound.
Replaced CIM with Telspar, cap and punchmark, set to published coordinates and the ties were updated

Updated reference ties are as shown below.



Revision Date
 6/13/2023

N.A.D. 1983 Coordinates
 (1996 Adjustment)

County Project Coordinates	
Northing	<u>180559.1667</u>
Easting	<u>436705.1199</u>
Date	<u>4/26/00</u>

I hereby certify that this United States public land survey monument record is correct and complete to the best of my knowledge and belief.
David Zieglmeier Date 7/19/23
 David Zieglmeier Anoka County Surveyor
 Minnesota License Number 46179

HISTORY OF GOVERNMENT CORNER

Page No. 82

County of Anoka

State of Minnesota

Northwest Corner of Sec. 19 Township 32 Range 25

CORNER HISTORY:

May 1952 – Egan, Field and Nowak found monument, type unknown, and established ties to monument.

April 17, 1961 – Found 1/2" iron pipe down 1.0'± and updated ties.

February 6, 1968 – Found spike and updated ties after train derailment.

June 20, 1969 – Found cast iron monument down 1.0'±, date set unknown, with a fence post on the north side up 4'± and updated ties.

August 1, 1972 – Found cast iron monument and updated ties.

July 6, 1976 – Found cast iron monument and updated ties.

June 25, 1979 – Found cast iron monument and updated ties.

August 12, 1982 – Found cast iron monument and updated ties.

July 25, 1985 – Found cast iron monument and updated ties.

June 9, 1988 – Found cast iron monument and updated ties.

November 19, 1991 – Found cast iron monument and updated ties.

August 11, 1993 – Found cast iron monument and updated ties.

April 26, 2000 – Found cast iron monument with a sign and post on the south side and established NAD 1983 (1996 Adjustment) Anoka County Project Coordinates by Static GPS methods. Updated ties.

April 12, 2010 – Found cast iron monument and updated ties.

October 6, 2015 – Found cast iron monument with a sign and post on the south side and updated ties.

April 21, 2020 – Found cast iron monument with a sign and post on the south side and updated ties. Verified position of corner by VRS GPS method.

October 3, 2022 – Found cast iron monument flush in dirt mound, verified position of corner by VRS GPS method and the ties were updated.

June 2, 2023 – Found cast iron monument flush in dirt mound. Removed found CIM and replaced with 6' square Telspar with cap and punch mark set to published coordinates using ACS RTK GPS method. Ties were updated after setting.