

CERTIFICATE OF LOCATION OF GOVERNMENT CORNER

County of Anoka

State of Minnesota

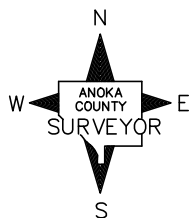
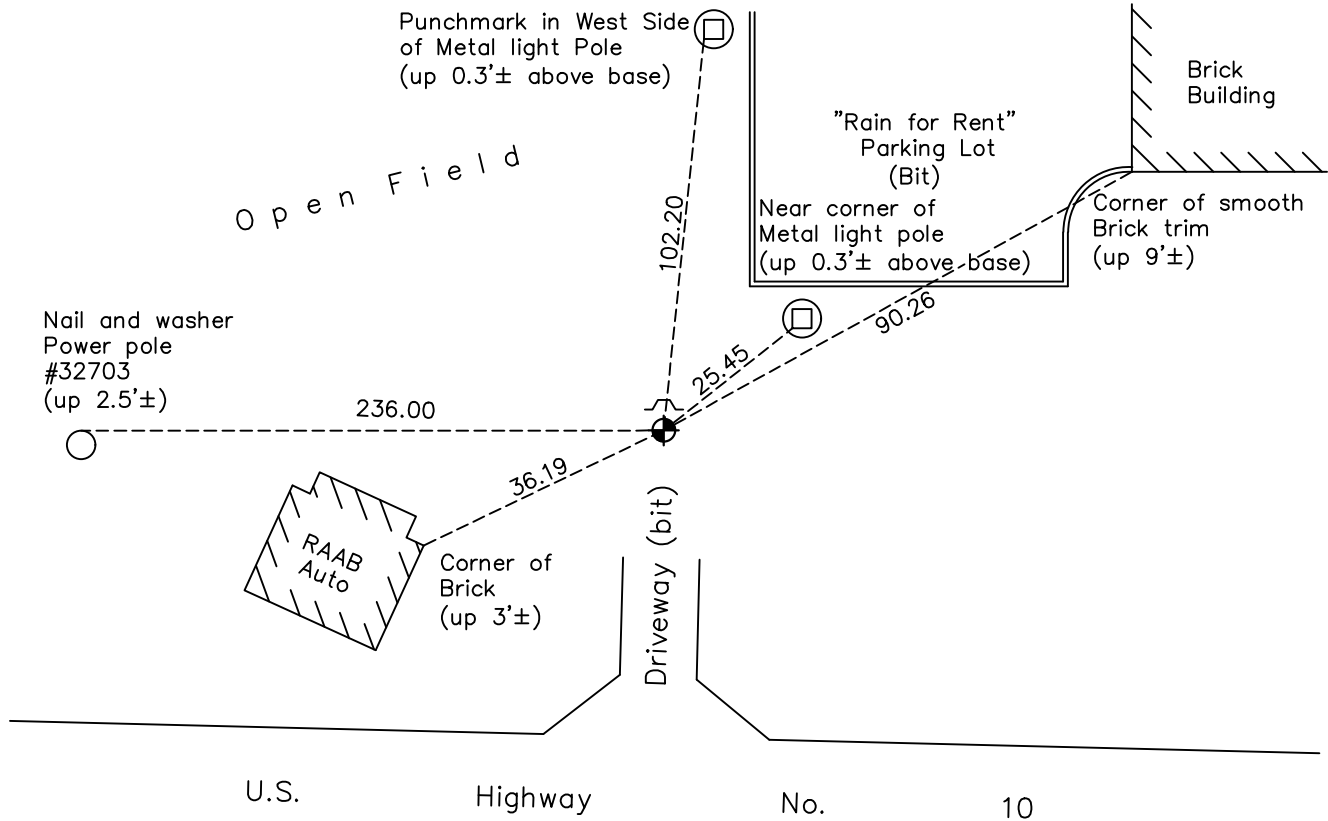
West 1/16 Corner of Sec. 19 Township 32 Range 25 (Northwest quarter)

On the 6th day of December, 1967, the described corner was evidenced by area resurvey

and to perpetuate the location of said corner, at the exact location thereof, a permanent marker was placed consisting of a cast iron monument

AND on the 3rd day of October, 2022, said permanent marker was found down 0.8'± with a sign and post on the north side and the ties were updated

Updated reference ties are as shown below.



Revision Date
 1/05/2023

N.A.D. 1983 Coordinates
 (1996 Adjustment)

County Project Coordinates	
Northing	179255.4205
Easting	436677.7213
Date	4/26/00

I hereby certify that this United States public land survey monument record is correct and complete to the best of my knowledge and belief.
David Zieglmeier Date 2/22/23
 David Zieglmeier Anoka County Surveyor
 Minnesota License Number 46179

HISTORY OF GOVERNMENT CORNER

Page No. 83

County of Anoka

State of Minnesota

West 1/16 Corner of Sec. 19 Township 32 Range 25 (Northwest quarter)

CORNER HISTORY:

December 6, 1967 – Set cast iron monument flush with the surface using area resurvey and established ties to monument.

June 17, 1969 – Replaced broken and leaning cast iron monument with an iron pipe set down 0.1'±. Updated ties.

August 1, 1972 – Found iron pipe and updated ties.

July 6, 1976 – Found Judicial Landmark cast iron monument, date set unknown, and updated ties.

June 25, 1979 – Found cast iron monument and updated ties.

August 16, 1982 – Found cast iron monument and updated ties.

July 25, 1985 – Found cast iron monument and updated ties.

June 10, 1988 – Found cast iron monument and updated ties.

April 26, 2000 – Found cast iron monument and established NAD 1983 (1996 Adjustment) Anoka County Project Coordinates by Static GPS methods. Updated ties.

April 19, 2010 – Found cast iron monument with a sign and post on the north side and updated ties.

October 6, 2015 – Found cast iron monument down 0.5'± with a sign and post on the north side and updated ties. Verified location of corner by VRS GPS methods.

May 18, 2020 – Found cast iron monument down 0.5'± with a sign and post on the north side and updated ties. Verified location of corner by VRS GPS methods.

October 3, 2022 – Found the cast iron monument down 0.8'±, verified position by VRS GPS method and the ties were updated.