

CERTIFICATE OF LOCATION OF GOVERNMENT CORNER

County of Anoka

State of Minnesota

Witness Corner of Sec. 19 Township 32 Range 25

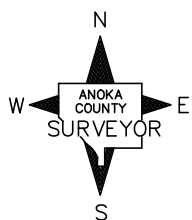
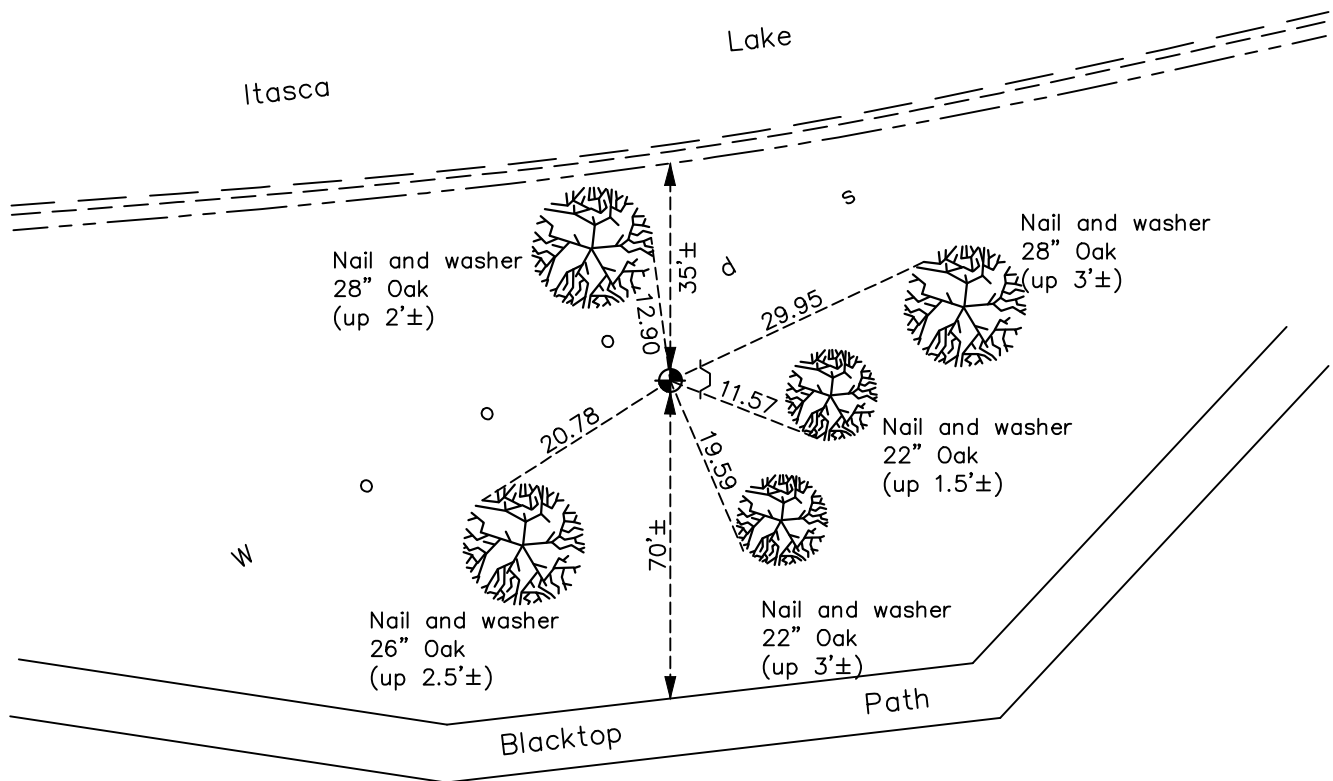
(On east line of section and south shore of lake)

On the 16th day of June, 1969, the described corner was evidenced by a spike set after
an area resurvey

and to perpetuate the location of said corner, at the exact location thereof, a permanent marker was placed consisting of a cast iron monument

AND on the 4th day of October, 2022, said permanent marker was found flush with a sign
and post on the east side and the ties were updated

Updated reference ties are as shown below.



Revision Date
1/05/2023

N.A.D. 1983 Coordinates
 (1996 Adjustment)

County Project Coordinates	
Northing	<u>178526.6297</u>
Easting	<u>442202.4519</u>
Date	<u>4/24/00</u>

I hereby certify that this United States public land survey monument record is correct and complete to the best of my knowledge and belief.
David Zieglmeier Date 2/22/23
 David Zieglmeier Anoka County Surveyor
 Minnesota License Number 46179

HISTORY OF GOVERNMENT CORNER

Page No. 86

County of Anoka

State of Minnesota

Witness Corner of Sec. 19 Township 32 Range 25
(On east line of section and south shore of lake)

CORNER HISTORY:

January 5, 1968 – Set spike in top center of 25' wide ice ridge and established ties to monument.

June 16, 1969 – Replaced spike with a cast iron monument and updated ties.

August 1, 1972 – Found cast iron monument and updated ties.

Date unknown – Found cast iron monument and updated ties.

June 25, 1979 – Found cast iron monument and updated ties.

August 12, 1982 – Found cast iron monument and updated ties.

September 16, 1985 – Found cast iron monument and updated ties.

June 10, 1988 – Found cast iron monument and updated ties.

August 18, 1993 – Found cast iron monument and updated ties.

May 13, 1996 – Found cast iron monument and updated ties.

April 24, 2000 – Found cast iron monument with a sign and post on the east side and established NAD 1983 (1996 Adjustment) Anoka County Project Coordinates by Static GPS methods. Updated ties.

April 19, 2010 – Found cast iron monument and updated ties.

October 13, 2015 – Found cast iron monument down $0.1' \pm$ with a sign and post on the east side and updated ties.

March 30, 2020 – Found cast iron monument down $0.1' \pm$ with a sign and post on the east side and updated ties.

October 4, 2022 – Found cast iron monument flush, verified position by VRS GPS method and the ties were updated.