

CERTIFICATE OF LOCATION OF GOVERNMENT CORNER

County of Anoka

State of Minnesota

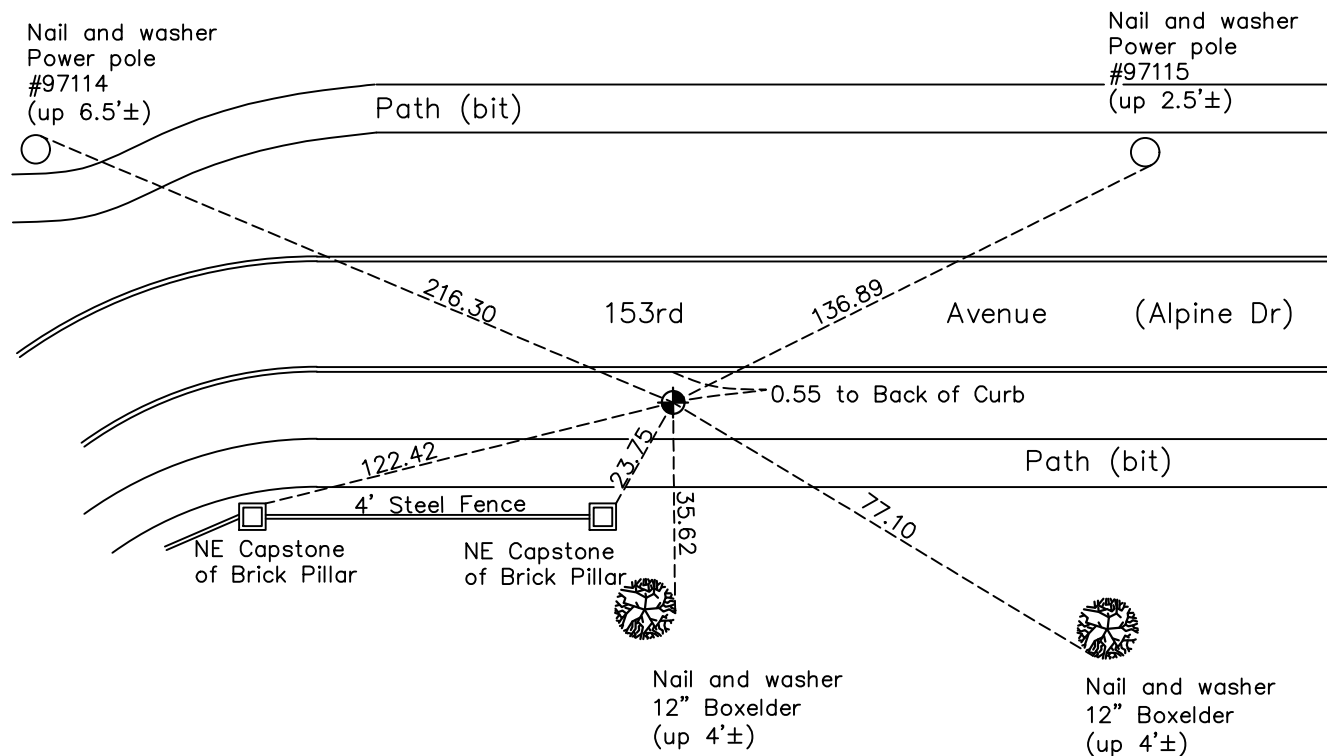
East 1/4 Corner of Sec. 19 Township 32 Range 25

On the 13th day of June, 1968, the described corner was evidenced by a spike set
using area resurvey

and to perpetuate the location of said corner, at the exact location thereof, a permanent marker
was placed consisting of a cast iron monument

AND on the 4th day of October, 2022, said permanent marker was found down 0.5' and
the ties were updated

Updated reference ties are as shown below.



Revision Date
1/05/2023

N.A.D. 1983 Coordinates
(1996 Adjustment)

County Project Coordinates	
Northing	<u>177825.4903</u>
Easting	<u>442201.2430</u>
Date	<u>4/24/00</u>

I hereby certify that this United States public land survey monument record is correct and complete to the best of my knowledge and belief.

David Zieglmeier Date 2/22/23

David Zieglmeier Anoka County Surveyor
Minnesota License Number 46179

HISTORY OF GOVERNMENT CORNER

Page No. 87

County of Anoka

State of Minnesota

East 1/4 Corner of Sec. 19 Township 32 Range 25

CORNER HISTORY:

January 8, 1968 – Set spike using area resurvey and established ties to monument.

June 13, 1968 – Replaced spike with a cast iron monument and updated ties.

June 16, 1969 – Found cast iron monument and updated ties.

August 1, 1972 – Found cast iron monument and updated ties.

July 12, 1976 – Found cast iron monument and updated ties.

June 25, 1979 – Found cast iron monument and updated ties.

August 12, 1982 – Found cast iron monument and updated ties.

September 16, 1986 – Found cast iron monument and updated ties.

January 20, 1988 – Set construction ties and removed cast iron monument prior to road construction.

June 13, 1988 – Set cast iron monument after road construction using construction ties.

August 11, 1993 – Found cast iron monument and updated ties.

April 24, 2000 – Found cast iron monument and established NAD 1983 (1996 Adjustment) Anoka County Project Coordinates by Static GPS methods. Updated ties.

April 13, 2010 – Found cast iron monument down 0.5'± and updated ties.

October 13, 2015 – Found cast iron monument down 0.5'± and updated ties.

March 30, 2020 – Found cast iron monument down 0.5'± and updated ties. Position of corner verified by VRS GPS methods.

October 4, 2022 – Found Cast Iron Monument down 0.5'±, verified the position by VRS GPS method and the ties were updated.