

# CERTIFICATE OF LOCATION OF GOVERNMENT CORNER

County of Anoka

State of Minnesota

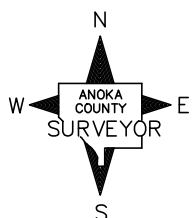
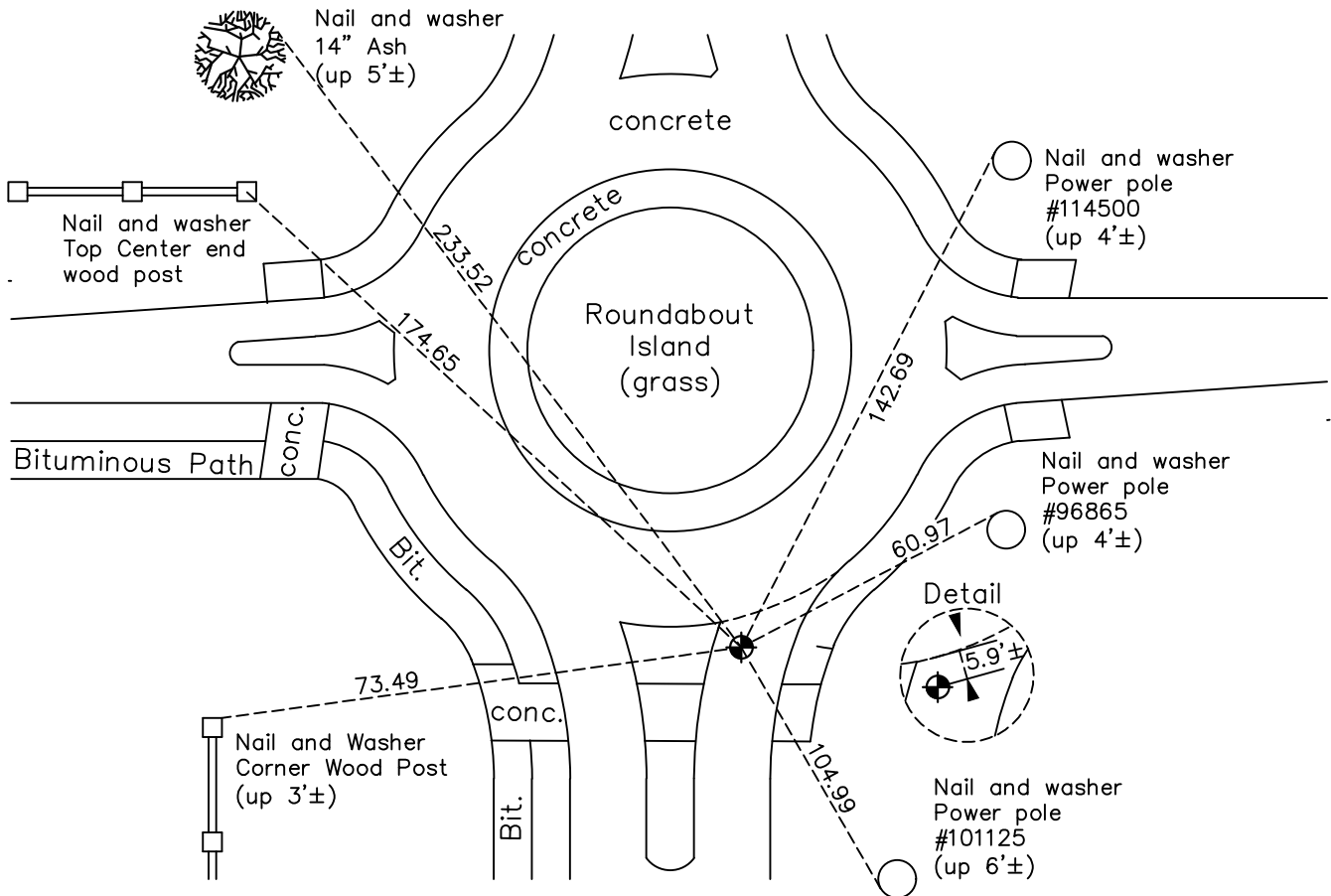
## East 1/4 Corner of Sec. 20 Township 32 Range 25

On the 29th day of July, 1969, the described corner was evidenced by a 1/2" iron pipe

and to perpetuate the location of said corner, at the exact location thereof, a permanent marker was placed consisting of a cast iron monument

AND on the 1st day of November, 2023, said permanent marker was reset 8" CIM after road construction, set in concrete, using static GPS method. Updated ties & verified position w/ RTK GPS.

Updated reference ties are as shown below.



Revision Date  
 11/06/2023

N.A.D. 1983 Coordinates  
 (1996 Adjustment)

County Project Coordinates	
Northing	177795.1759
Easting	447519.7864
Date	2/01/00

I hereby certify that this United States public land survey monument record is correct and complete to the best of my knowledge and belief.  
*David Zieglmeier* Date 3/28/24  
 David Zieglmeier Anoka County Surveyor  
 Minnesota License Number 46179

# HISTORY OF GOVERNMENT CORNER

Page No. 88

County of Anoka

State of Minnesota

## East 1/4 Corner of Sec. 20 Township 32 Range 25

### **CORNER HISTORY:**

April 18, 1961 – Found 1/2" iron pipe bent under blacktop with 3 old ties remaining. Replaced it with a new iron pipe set down 0.3'±. Established ties to monument.

August 5, 1964 – Found iron pipe down 0.1'± and updated ties.

July 29, 1969 – Replaced iron pipe with a cast iron monument set flush with the surface. Updated ties and set P.K. nails 2.00' north and east of monument.

7/27/72, 7/1/76, 6/25/79, 8/19/82, 7/19/85, 6/7/88 – Found cast iron monument and updated ties.

June 13, 1988 – Set construction ties prior to road construction.

June 22, 1989 – Set cast iron monument after road construction using construction ties.

August 9, 1993 – Found cast iron monument and updated ties.

February 1, 2000 – Found cast iron monument and established NAD 1983 (1996 Adjustment) Anoka County Project Coordinates by Static GPS methods. Updated ties.

April 30, 2010 – Found cast iron monument flush with the surface and updated ties.

October 22, 2015 – Found cast iron monument flush with the surface on centerline and updated ties. Verified location of corner by VRS GPS methods.

June 29, 2016 – Set construction ties and removed cast iron monument prior to road construction. Verified location of corner by VRS GPS methods.

November 15, 2016 – Set cast iron monument after road construction using construction ties. Verified location of corner by Static GPS methods.

April 30, 2020 – Found cast iron monument and updated ties.

October 10, 2022 – Found Cast Iron Monument flush, verified position by VRS GPS method and the ties were updated.

April 13, 2023 – Found Cast Iron Monument verified position by RTK GPS method and the ties were updated. Removed cast iron monument for road construction.

November 1, 2023 – Reset 8" Cast Iron Monumnet after roundabout construction, set in concrete, using static GPS method. Updated ties after setting and verified position with RTK GPS method.