

# CERTIFICATE OF LOCATION OF GOVERNMENT CORNER

County of Anoka

State of Minnesota

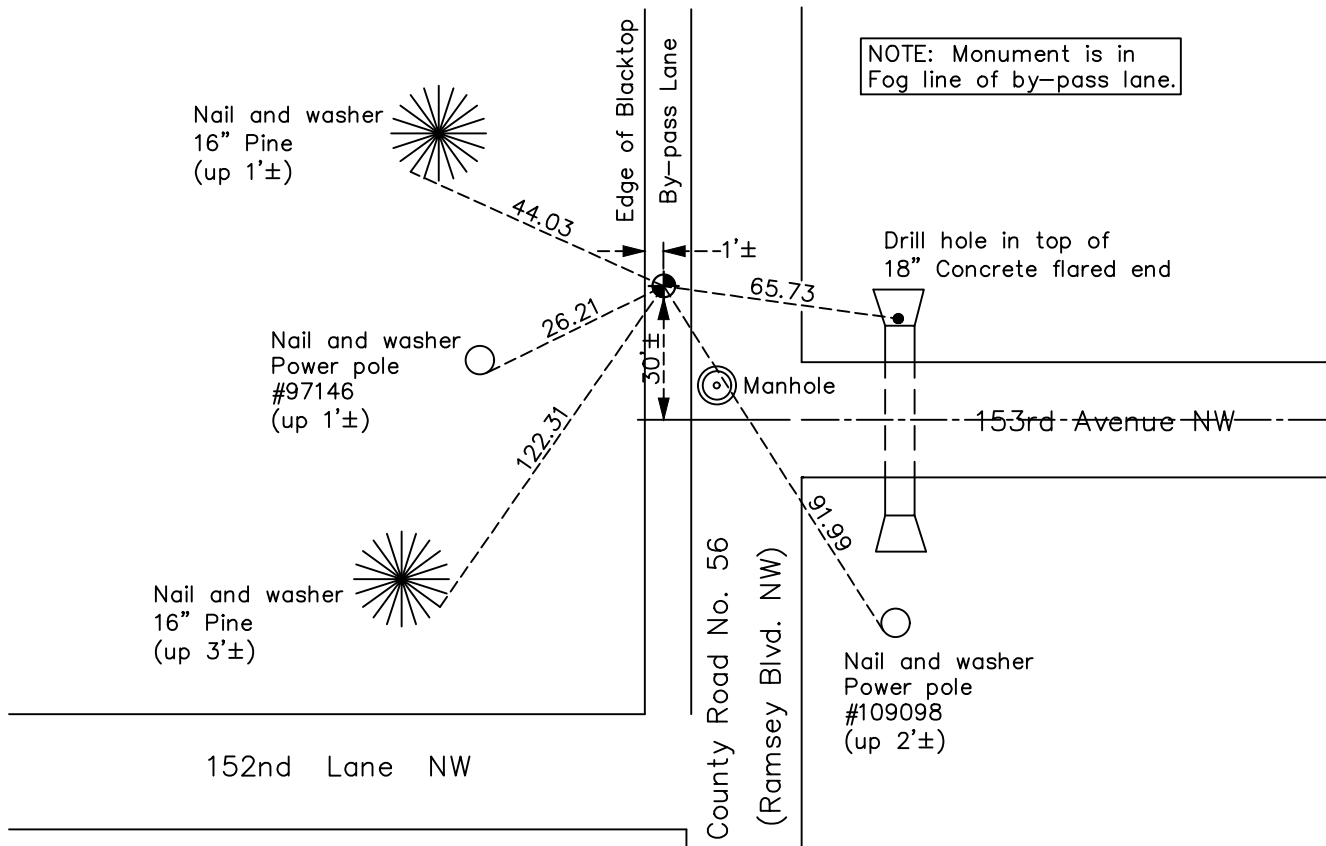
## West 1/4 Corner of Sec. 22 Township 32 Range 25

On the 16th day of August, 1961, the described corner was evidenced by area resurvey

and to perpetuate the location of said corner, at the exact location thereof, a permanent marker was placed consisting of a cast iron monument

AND on the 10th day of October, 2022, said permanent marker was found flush with the surface and the ties were updated

Updated reference ties are as shown below.



Revision Date  
1/05/2023

N.A.D. 1983 Coordinates  
(1996 Adjustment)

County Project Coordinates	
Northing	<u>177745.3882</u>
Easting	<u>452806.2216</u>
Date	<u>12/17/99</u>

I hereby certify that this United States public land survey monument record is correct and complete to the best of my knowledge and belief.

*David Zieglmeier* Date 2/22/23

David Zieglmeier Anoka County Surveyor  
Minnesota License Number 46179

# HISTORY OF GOVERNMENT CORNER

Page No. 89

County of Anoka

State of Minnesota

## West 1/4 Corner of Sec. 22 Township 32 Range 25

### **CORNER HISTORY:**

August 16, 1961 – Set cast iron monument in bottom center of ditch and flush with the surface and established ties to monument.

August 4, 1964 – Found cast iron monument and updated ties.

June 23, 1969 – Found cast iron monument and updated ties.

July 26, 1972 – Found cast iron monument and updated ties.

July 2, 1976 – Found cast iron monument and updated ties.

June 25, 1979 – Found cast iron monument and updated ties.

April 14, 1982 – Set construction ties prior to road construction.

July 17, 1985 – Found cast iron monument, date reset unknown, and updated ties.

June 16, 1988 – Found cast iron monument and updated ties.

August 6, 1993 – Found cast iron monument and updated ties.

December 17, 1999 – Found cast iron monument and established NAD 1983 (1996 Adjustment) Anoka County Project Coordinates by Static GPS methods. Updated ties.

April 23, 2010 – Found cast iron monument down  $0.1'\pm$  and  $0.5'\pm$  west of edge of bituminous. Updated ties.

May 30, 2014 – Set construction ties and removed cast iron monument prior to road construction. Verified location of corner by VRS GPS methods.

July 10, 2014 – Set cast iron monument after road construction using construction ties. Verified location of corner by VRS GPS methods.

April 24, 2020 – Found cast iron monument and updated ties. Position of corner verified by VRS GPS methods.

October 10, 2022 – Found cast iron monument flush, verified position by VRS GPS method and the ties were updated.