

CERTIFICATE OF LOCATION OF GOVERNMENT CORNER

County of Anoka

State of Minnesota

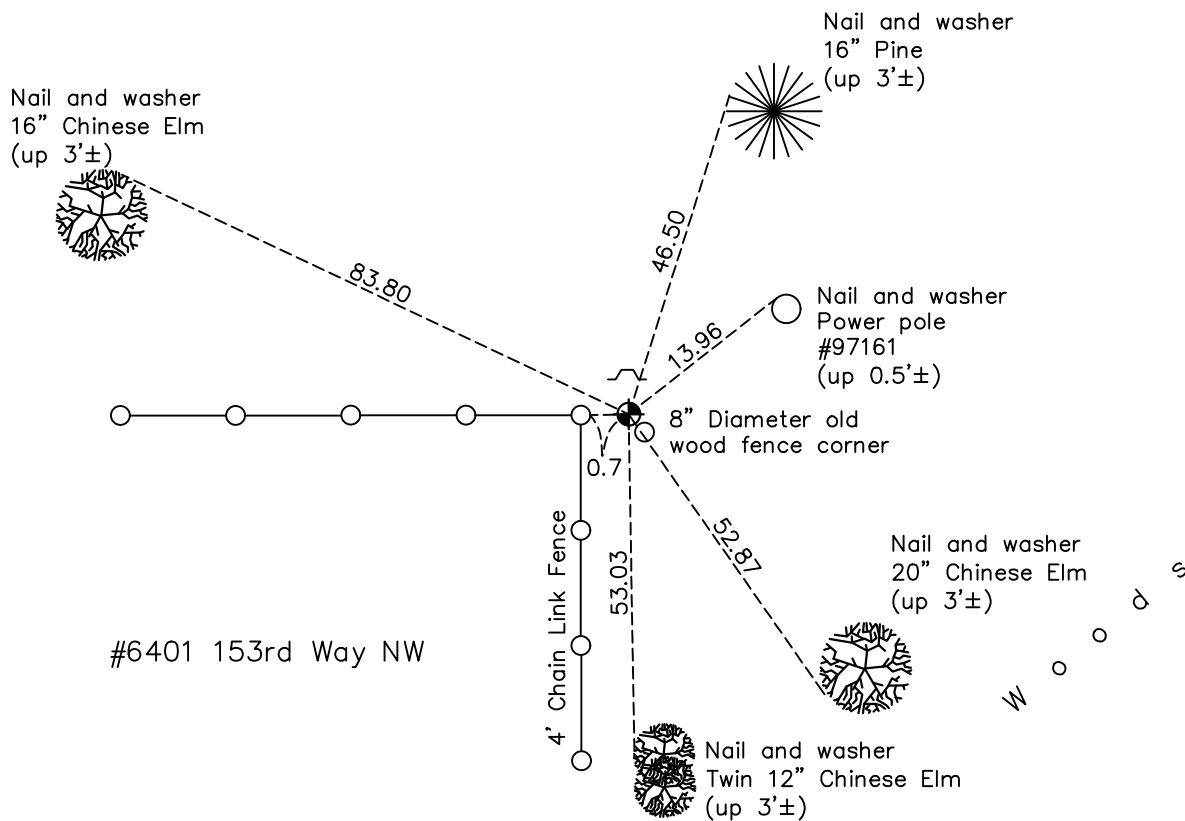
West 1/4 Corner of Sec. 23 Township 32 Range 25

On the 5th day of January, 1961, the described corner was evidenced by a 2" iron pipe

and to perpetuate the location of said corner, at the exact location thereof, a permanent marker was placed consisting of a cast iron monument found July 29, 1985

AND on the 10th day of October, 2022, said permanent marker was found down 0.5'± with a sign and post on the north side and the ties were updated

Updated reference ties are as shown below.



Revision Date
01/05/2023

N.A.D. 1983 Coordinates
(1996 Adjustment)

County Project Coordinates	
Northing	<u>177736.1276</u>
Easting	<u>458087.5234</u>
Date	<u>5/05/00</u>

I hereby certify that this United States public land survey monument record is correct and complete to the best of my knowledge and belief.

David Zieglmeier Date 2/22/23

David Zieglmeier Anoka County Surveyor
Minnesota License Number 46179

HISTORY OF GOVERNMENT CORNER

Page No. 90

County of Anoka

State of Minnesota

West 1/4 Corner of Sec. 23 Township 32 Range 25

CORNER HISTORY:

January 5, 1961 – Found 2” iron pipe at fence corner. Established ties to iron pipe.

August 6, 1964 – Found 2” iron pipe and updated ties.

June 19, 1969 – Found 2” iron pipe with top damaged and flush with the surface. Updated ties.

July 28, 1972 – Found 2” iron pipe and updated ties.

July 6, 1976 – Found 2” iron pipe and updated ties.

June 25, 1979 – Found 2” iron pipe and updated ties.

August 18, 1982 – Found 2” iron pipe and updated ties.

July 29, 1985 – Found cast iron monument, date set unknown, and updated ties.

June 17, 1988 – Found cast iron monument and updated ties.

August 16, 1993 – Found cast iron monument and updated ties.

May 5, 2000 – Found cast iron monument and established NAD 1983 (1996 Adjustment) Anoka County Project Coordinates by Static GPS methods. Updated ties.

April 5, 2010 – Found cast iron monument down $0.2' \pm$ with a sign and post on the north side and updated ties.

October 26, 2015 – Found cast iron monument down $0.5' \pm$ with a sign and post on the north side and updated ties.

April 24, 2020 – Found cast iron monument down $0.5' \pm$ with a sign and post on the north side and updated ties. Verified position of corner by VRS GPS method.

October 10, 2022 – Found cast iron monument down $0.5' \pm$, verified position by VRS GPS method and the ties were updated.