

CERTIFICATE OF LOCATION OF GOVERNMENT CORNER

County of Anoka

State of Minnesota

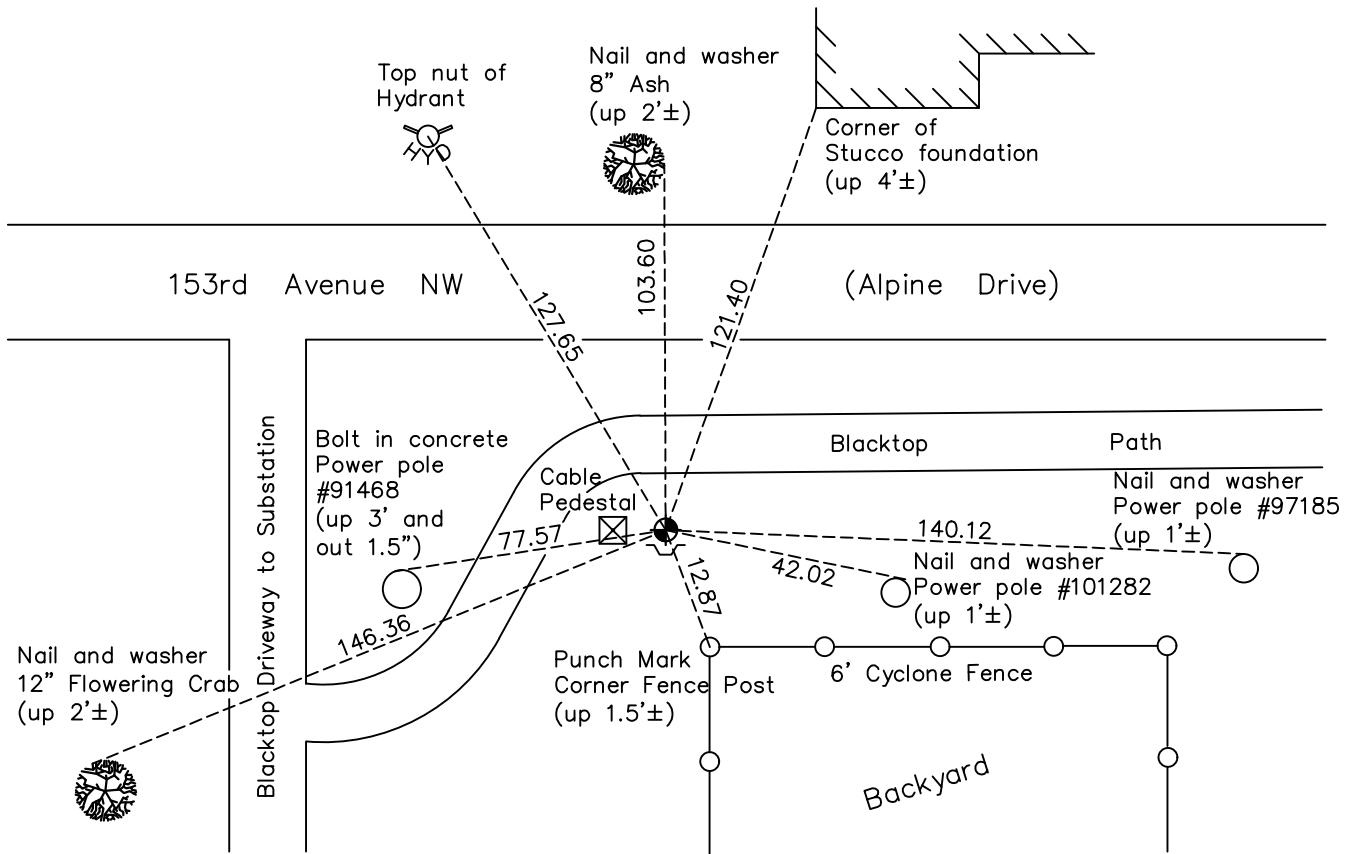
East 1/4 Corner of Sec. 23 Township 32 Range 25

On the 28th day of August, 1959, the described corner was evidenced by a granite monument

and to perpetuate the location of said corner, at the exact location thereof, a permanent marker was placed consisting of a cast iron monument found November 10, 1977

AND on the 13th day of October, 2022, said permanent marker was found down 0.5'± with a sign and post on the south side and the ties were updated

Updated reference ties are as shown below.



N.A.D. 1983 Coordinates
(1996 Adjustment)

County Project Coordinates	
Northing	177753.1038
Easting	463356.4659
Date	8/30/99

Revision Date
1/05/2023

I hereby certify that this United States public land survey monument record is correct and complete to the best of my knowledge and belief.

David Zieglmeier Date 2/22/23

David Zieglmeier Anoka County Surveyor
Minnesota License Number 46179

HISTORY OF GOVERNMENT CORNER

Page No. 91

County of Anoka

State of Minnesota

East 1/4 Corner of Sec. 23 Township 32 Range 25

CORNER HISTORY:

August 28, 1959 – Found granite monument up 1.0'±. Established ties to monument.

August 11, 1964 – Found granite monument and updated ties.

June 19, 1969 – Found granite monument up 0.5'± and updated ties.

August 8, 1972 – Found granite monument and updated ties.

November 14, 1975 – Set construction ties prior to road construction.

July 6, 1976 – Found granite monument and updated ties.

November 10, 1977 – Found cast iron monument set in place of granite monument, date unknown, and updated ties. Found sign and post on the south side.

January 30, 1978 – Found cast iron monument with sign and post on the south side and updated ties.

June 25, 1979 – Found cast iron monument and updated ties.

August 19, 1982 – Found cast iron monument and updated ties.

July 28, 1985 – Found cast iron monument and updated ties.

June 6, 1988 – Found cast iron monument and updated ties.

August 11, 1993 – Found cast iron monument and updated ties.

August 30, 1999 – Found cast iron monument with a sign and post on the south side and established NAD 1983 (1996 Adjustment) Anoka County Project Coordinates by Static GPS methods. Updated ties.

April 7, 2010 – Found cast iron monument and updated ties.

September 21, 2015 – Found cast iron monument down 0.5'± with a sign and post on the south side and updated ties.

March 16, 2020 – Found cast iron monument down 0.5'± with a sign and post on the south side and updated ties. Verified position of corner by VRS GPS method.

October 13, 2022 – Found cast iron monument down 0.5'±, verified position by VRS GPS method and the ties were updated.