

CERTIFICATE OF LOCATION OF GOVERNMENT CORNER

County of Anoka

State of Minnesota

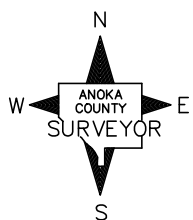
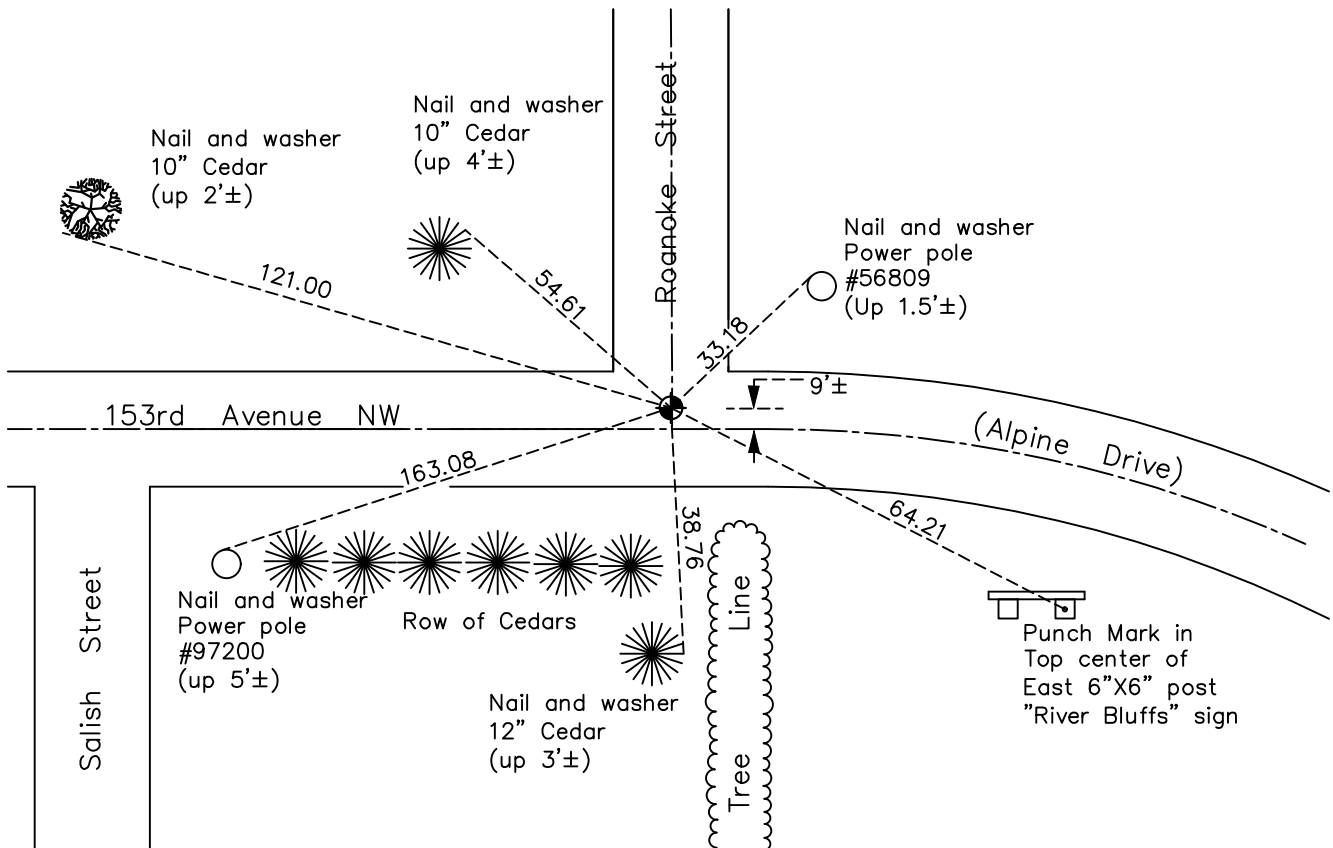
East 1/4 Corner of Sec. 24 Township 32 Range 25

On the 8th day of August, 1972, the described corner was evidenced by a granite monument

and to perpetuate the location of said corner, at the exact location thereof, a permanent marker was placed consisting of a cast iron monument

AND on the 5th day of October, 2022, said permanent marker was found down 0.2'± and the ties were updated

Updated reference ties are as shown below.



Revision Date
1/05/2023

N.A.D. 1983 Coordinates
(1996 Adjustment)

County Project Coordinates	
Northing	<u>177759.2200</u>
Easting	<u>468604.8501</u>
Date	<u>4/04/00</u>

I hereby certify that this United States public land survey monument record is correct and complete to the best of my knowledge and belief.
David Zieglmeier Date 2/22/23
David Zieglmeier Anoka County Surveyor
Minnesota License Number 46179

HISTORY OF GOVERNMENT CORNER

Page No. 92

County of Anoka

State of Minnesota

East 1/4 Corner of Sec. 24 Township 32 Range 25

CORNER HISTORY:

August 31, 1959 – Found monument, no indication of type, and established ties to monument.

August 11, 1964 – Found granite monument with top broken off and flush with the surface. Updated ties.

June 24, 1969 – Found granite monument with a 3/4" iron pipe on the north side and updated ties.

August 8, 1972 – Replaced granite monument and 3/4" iron pipe with a cast iron monument. Updated ties.

July 6, 1976 – Found cast iron monument and updated ties.

July 22, 1976 – Found cast iron monument and updated ties.

June 26, 1979 – Found cast iron monument and updated ties.

August 19, 1982 – Found cast iron monument and updated ties.

April 14, 1987 – Updated ties and removed cast iron monument prior to road construction.

January 20, 1988 – Set P.K. nail after road construction using ties.

August 1, 1993 – Found cast iron monument, date reset unknown, and updated ties.

April 4, 2000 – Found cast iron monument and established NAD 1983 (1996 Adjustment) Anoka County Project Coordinates by Static GPS methods. Updated ties.

April 7, 2010 – Found cast iron monument flush with the surface and updated ties.

September 21, 2015 – Found cast iron monument down 0.2'± and updated ties.

March 16, 2020 – Found cast iron monument down 0.2'± and updated ties. Verified position of corner by VRS GPS method.

October 5, 2022 – Found cast iron monument down 0.2'±, verified position by GPS VRS method and the ties were updated.