

CERTIFICATE OF LOCATION OF GOVERNMENT CORNER

County of Anoka

State of Minnesota

Witness Corner of Sec. 24 Township 32 Range 25

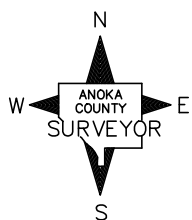
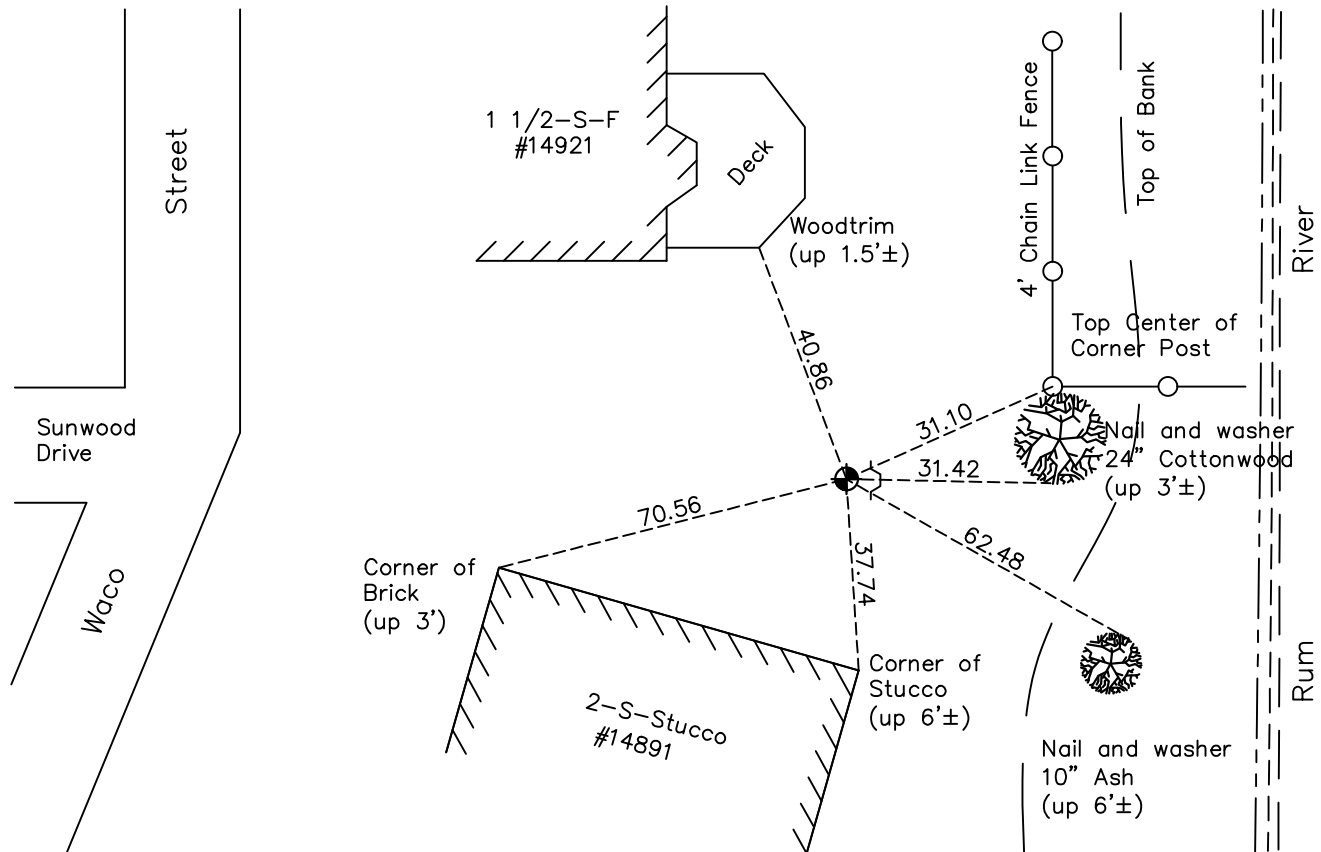
(On south line of SE 1/4)

On the 11th day of July, 1963, the described corner was evidenced by area resurvey

and to perpetuate the location of said corner, at the exact location thereof, a permanent marker was placed consisting of a cast iron monument

AND on the 18th day of October, 2022, said permanent marker was found down 0.8'± with a sign and post on the east side and the ties were updated

Updated reference ties are as shown below.



Revision Date

1/05/2023

N.A.D. 1983 Coordinates
(1996 Adjustment)

County Project Coordinates

Northing 175090.1709

Easting 467247.2366

Date 5/09/00

I hereby certify that this United States public land survey monument record is correct and complete to the best of my knowledge and belief.

David Zieglmeier Date 2/22/23

David Zieglmeier Anoka County Surveyor

Minnesota License Number 46179

HISTORY OF GOVERNMENT CORNER

Page No. 94

County of Anoka

State of Minnesota

Witness Corner of Sec. 24 Township 32 Range 25
(On south line of SE 1/4)

CORNER HISTORY:

July 11, 1963 – Set cast iron monument 1282 feet east of South 1/4 corner and down 0.3'± using area resurvey and established ties to monument.

August 11, 1964 – Found cast iron monument and updated ties.

June 24, 1969 – Found cast iron monument down 0.7'± and updated ties.

August 8, 1972 – Found cast iron monument and updated ties.

July 6, 1976 – Found cast iron monument and updated ties.

June 26, 1979 – Found cast iron monument and updated ties.

August 17, 1982 – Found cast iron monument and updated ties.

October 17, 1984 – Set construction ties prior to road construction.

June 13, 1985 – Set cast iron monument after road construction using construction ties. Updated ties.

July 1, 1988 – Found cast iron monument and updated ties.

August 27, 1993 – Updated ties to cast iron monument down 1'± after construction and verified location using area resurvey. Set sign and post on the east side of monument.

May 9, 2000 – Found cast iron monument down 1.5'± with a sign and post on the east side and established NAD 1983 (1996 Adjustment) Anoka County Project Coordinates by Static GPS methods. Updated ties.

April 7, 2010 – Found cast iron monument down 1.5'± and updated ties.

October 15, 2015 – Found cast iron monument down 1'± with a sign and post on the east side and updated ties.

April 30, 2020 – Found cast iron monument down 1'± with a sign and post on the east side and updated ties. Verified position of corner by VRS GPS method.

October 18, 2022 – Found cast iron monument down 0.8'±, verified position by VRS GPS method and the ties were updated.