

CERTIFICATE OF LOCATION OF GOVERNMENT CORNER

County of Anoka

State of Minnesota

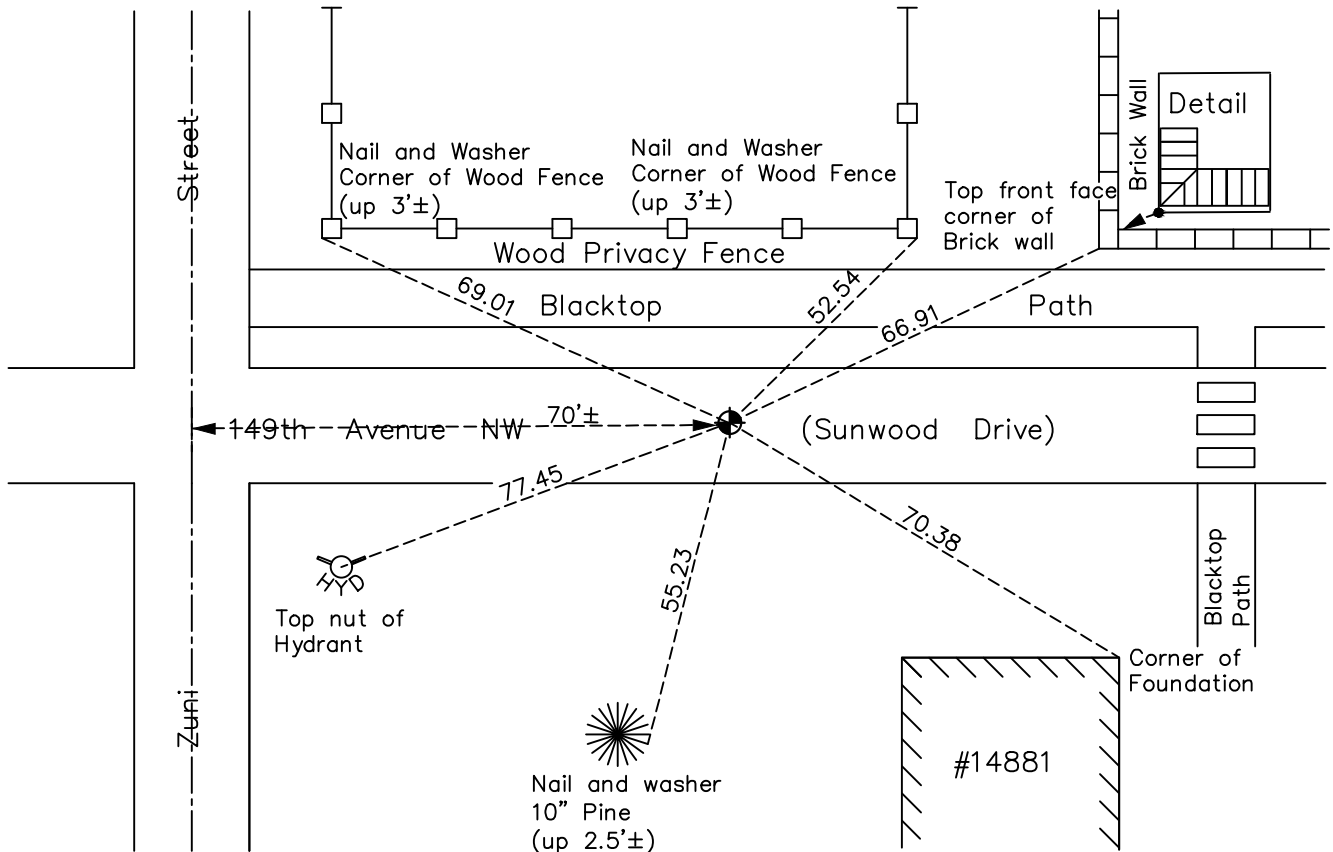
South 1/4 Corner of Sec. 24 Township 32 Range 25

On the 26th day of July, 1961, the described corner was evidenced by a 1" iron pipe

and to perpetuate the location of said corner, at the exact location thereof, a permanent marker was placed consisting of a cast iron monument

AND on the 16th day of May, 2023, said permanent marker was set cast iron monument after road construction, verified position using RTK GPS methods. Updated ties.

Updated reference ties are as shown below.



Revision Date
6/1/2023

N.A.D. 1983 Coordinates
(1996 Adjustment)

County Project Coordinates	
Northing	175080.1101
Easting	465965.6631
Date	4/04/00

I hereby certify that this United States public land survey monument record is correct and complete to the best of my knowledge and belief.

David Zieglmeier Date 7/19/23

David Zieglmeier Anoka County Surveyor
Minnesota License Number 46179

HISTORY OF GOVERNMENT CORNER

Page No. 95

County of Anoka

State of Minnesota

South 1/4 Corner of Sec. 24 Township 32 Range 25

CORNER HISTORY:

April 15, 1961 - Ray Prasch of Cartwright and Olson set a 1" X 4' iron pipe and established ties to iron pipe.

July 26, 1961 - Found 1" iron pipe up 0.5'± and updated ties.

August 11, 1964 - Found 1" iron pipe down 0.3'± and updated ties.

June 24, 1969 - Replaced 1" iron pipe with a cast iron monument set up 0.1'± and updated ties. Set sign and post on the north side of monument.

8/8/72, 7/6/76, 8/17/82, 6/27/79 - Found cast iron monument and updated ties.

October 17, 1984 - Set P.K. nail after road construction and verified position using ties.

June 14, 1985 - Replaced P.K. nail with a cast iron monument and updated ties.

July 1, 1988 - Lowered cast iron monument and updated ties.

August 10, 1993 - Found cast iron monument and updated ties.

April 4, 2000 - Found cast iron monument and established NAD 1983 (1996 Adjustment) Anoka County Project Coordinates by Static GPS methods. Updated ties.

4/7/10, 10/16/15 - Found cast iron monument flush with the surface and updated ties.

March 16, 2020 - Found cast iron monument flush with the surface and updated ties. Verified position of corner by VRS GPS method.

May 16, 2023 - set cast iron monument after road construction, verified position using RTK GPS methods. Updated ties. Job no. 22-131