

CERTIFICATE OF LOCATION OF GOVERNMENT CORNER

County of Anoka

State of Minnesota

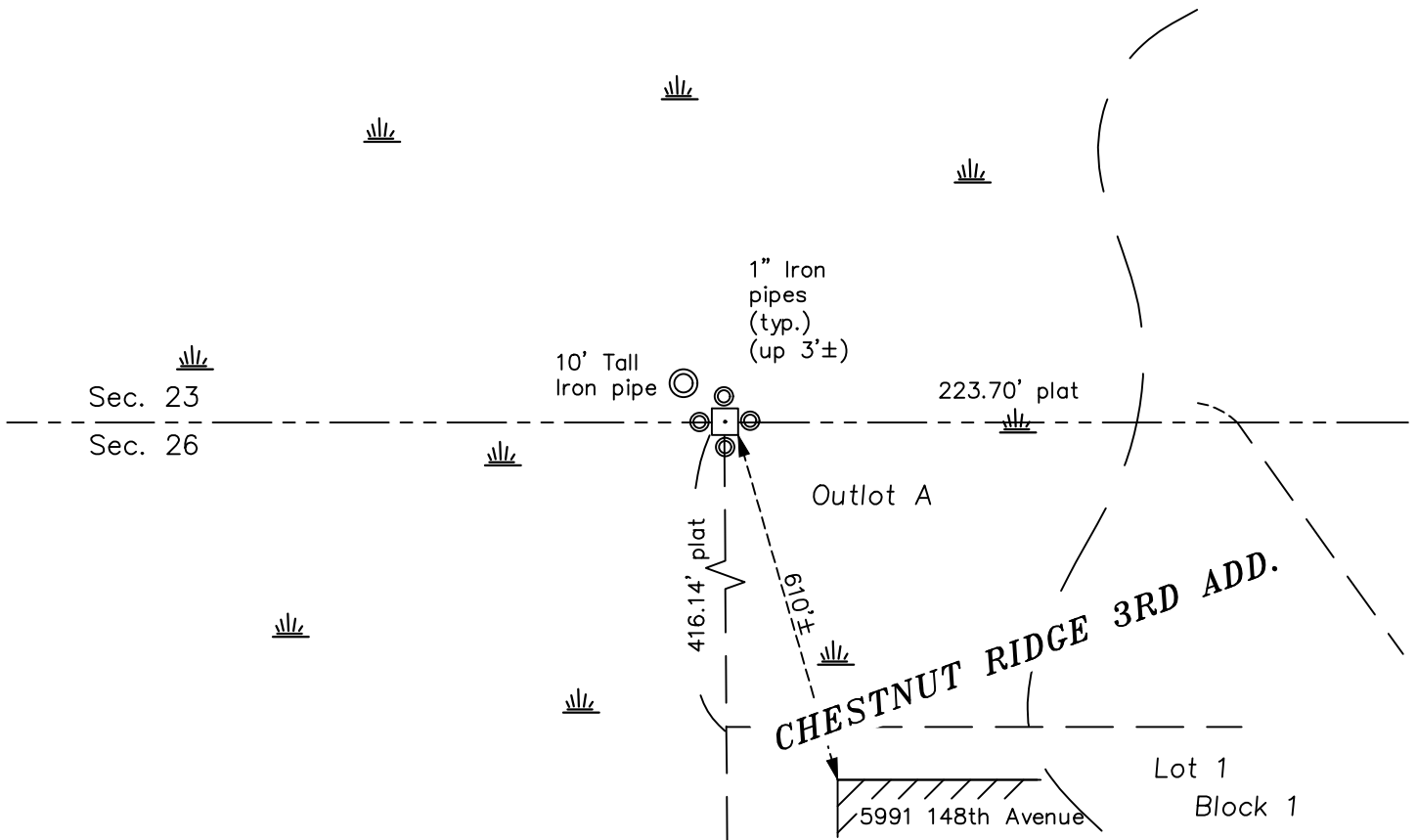
South 1/4 Corner of Sec. 23 Township 32 Range 25

On the 15th day of January, 1964, the described corner was evidenced by a 6"X6" granite monument

and to perpetuate the location of said corner, at the exact location thereof, a permanent marker was placed consisting of the same granite monument with 1" iron pipes on all sides

AND on the 2nd day of March, 2018, said permanent marker was found. There are no available ties within 500'±

Updated reference ties are as shown below.



Revision Date

3/29/24

N.A.D. 1983 Coordinates
(1996 Adjustment)

County Project Coordinates	
Northing	<u>175098.4287</u>
Easting	<u>460710.5345</u>
Date	<u>12/29/99</u>

I hereby certify that this United States public land survey monument record is correct and complete to the best of my knowledge and belief.

David Zieglmeier Date 3/29/24

David M. Zieglmeier, Anoka County Surveyor

Minnesota License Number 46179

HISTORY OF GOVERNMENT CORNER

Page No. 97

County of Anoka

State of Minnesota

South 1/4 Corner of Sec. 23 Township 32 Range 25

CORNER HISTORY:

July 1850 - This corner was established by John Ryan, Deputy Surveyor. Ryan marked this position by "set quarter section post" with two bearing trees marked as accessories.

July 16, 1963 - N.C. Hoium and Associates found a granite monument marked with an old fence post.

January 15, 1964 - Found 6" square granite monument up 0.5'± at intersection of fence lines in swamp. Found wood fence post on east side of monument.

August 7, 1964 - Found granite monument.

January 21, 1974 - Found granite monument 1'± south of fence.

January 31, 1978 - Found granite monument leaning slightly north. Established ties to monument.

April 29, 1982 - Found granite monument laying on its side. Straightened monument and updated ties. Set 1" iron pipe on all sides of monument. Verified location using area resurvey.

July 11, 1988 - Found granite monument and updated ties.

February 22, 1996 - the recorded plat of CHESTNUT RIDGE 2ND ADDITION shows a granite monument at this position.

December 29, 1999 - Found granite monument with 1" iron pipe on all sides and established NAD 1983 (1996 Adjustment) Anoka County Project Coordinates by Static GPS methods. Updated ties.

N=175098.4287 E=450710.5345

April 22, 2010 - Found granite monument and updated ties.

March 2, 2018 - Found granite monument with 1" iron pipes on all sides. There were no available ties within 500'± of the monument. Verified location of corner by VRS GPS methods.