

# CERTIFICATE OF LOCATION OF GOVERNMENT CORNER

County of Anoka

State of Minnesota

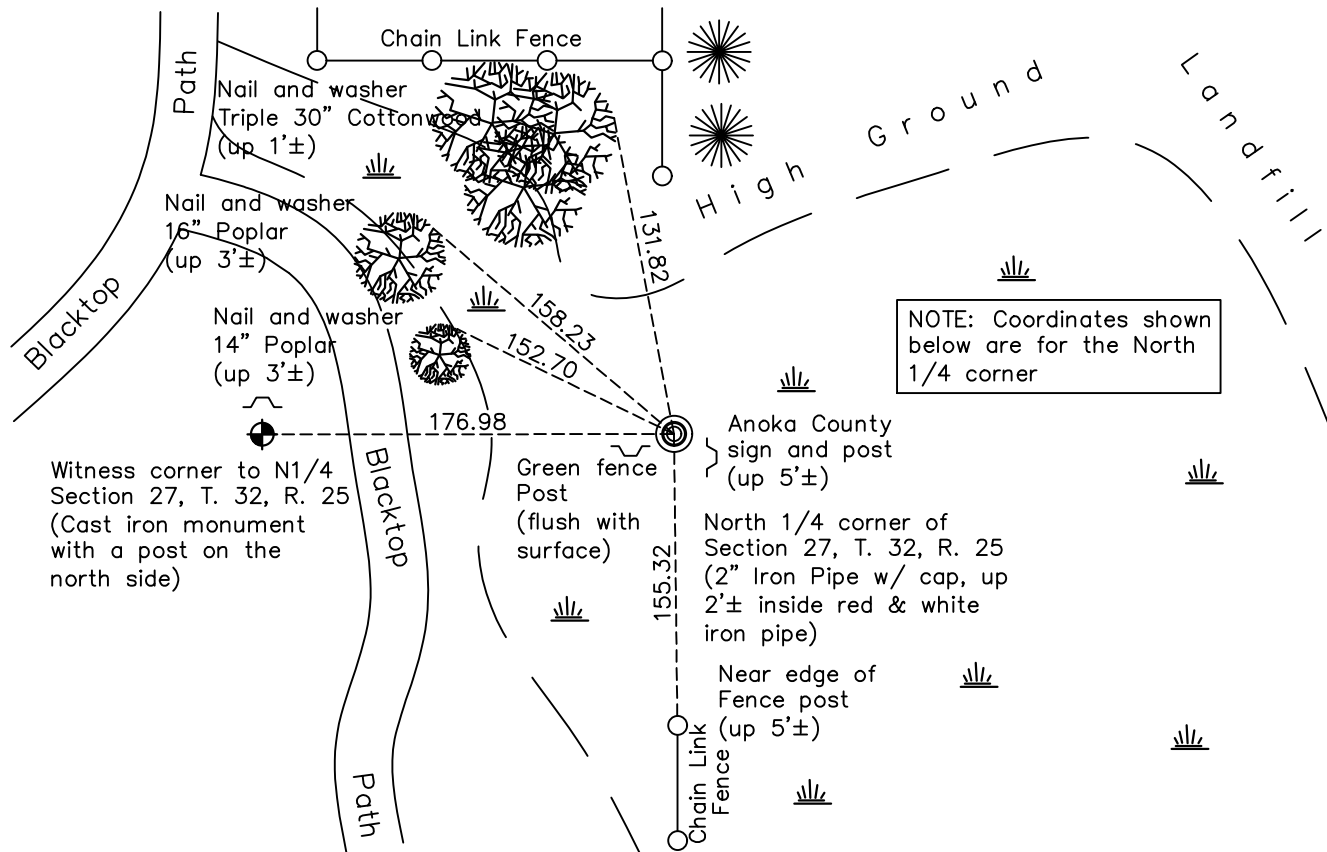
## North 1/4 Corner of Sec. 27 Township 32 Range 25

On the 5th day of January, 1961, the described corner was evidenced by a 1" iron pipe up 2'± in swamp

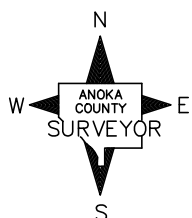
and to perpetuate the location of said corner, at the exact location thereof, a permanent marker was placed consisting of a 2" iron pipe with punch mark in "County Surveyor" cap up 2'± inside a 3" red and white iron pipe up 1'±. A cast iron monument witness corner was set to the west.

AND on the 5th day of January, 2021, said permanent marker was found as described a 2" iron pipe up 2'± inside a 3" iron pipe up 1'± and the ties were updated

Updated reference ties are as shown below.



NOTE: Coordinates shown below are for the North 1/4 corner



N.A.D. 1983 Coordinates  
(1996 Adjustment)

County Project Coordinates	
Northing	<u>175093.6489</u>
Easting	<u>455468.6027</u>
Date	<u>5/04/00</u>

Revision Date  
1/05/2021

I hereby certify that this United States public land survey monument record is correct and complete to the best of my knowledge and belief.  
*David Zieglmeier* Date 7/19/23  
David Zieglmeier Anoka County Surveyor  
Minnesota License Number 46179

# HISTORY OF GOVERNMENT CORNER

Page No. 99

County of Anoka

State of Minnesota

## North 1/4 Corner of Sec. 27 Township 32 Range 25

### **CORNER HISTORY:**

January 5, 1961 - Found 1" iron pipe up 2'± in swamp. Established ties to monument.

January 21, 1974 - Replaced 1" iron pipe with a 2.5" iron pipe set up 0.5'± and updated ties.

September 17, 1975 - Set cast iron monuments as witness corners to the North 1/4 corner using area resurvey. Also set signs and posts on the north side of both monuments.

July 6, 1976 - Found cast iron monument witness corners with signs and posts on the north side.

June 25, 1979 - Found cast iron monument witness corners with signs and posts on the north side.

August 12, 1982 - Found cast iron monument witness corners with signs and posts on the north side.

June 28, 1988 - Found cast iron monument witness corners with signs and posts on the north side.

August 12, 1993 - Found cast iron monument witness corners with signs and posts on the north side.

May 4, 2000 - Found iron pipe at location of North 1/4 corner and westerly cast iron monument witness corner and established NAD 1983 (1996 Adjustment) Anoka County Project Coordinates by Static GPS methods for both corners.

January 8, 2001 - Found easterly cast iron monument witness corner missing. Found westerly cast iron monument witness corner and found red and white iron pipe up 1'± at location of North 1/4 corner.

March 2, 2011 - Found red and white iron pipe under water at the location of the North 1/4 corner. Set 2" iron pipe inside found iron pipe up 2'± with a punch mark in a "County Surveyor" cap on top. Established ties to iron pipe and verified location of corner by VRS GPS methods. Also found an Anoka County sign and post on the north side flush with the surface, an Anoka County sign and post on the southeast side up 6'± and a green fence post on the west side up 2'±.

February 16, 2016 - Found 2" iron pipe up 2'± with a punch mark in a "County Surveyor" cap inside a red and white iron pipe and updated ties. Found sign and post up 5'± on southeast side and green fence post flush with the surface west of iron pipe. Sign and post to north was found missing. Verified location of corner by VRS GPS methods. Also found witness corner cast iron monument with a post on the north side west of North 1/4 corner.

January 5, 2021 - Found 2" iron pipe up 2'± with a punch mark in a "County Surveyor" cap inside a red and white iron pipe and updated ties. Verified location of corner by VRS GPS methods.