

# CERTIFICATE OF LOCATION OF GOVERNMENT CORNER

County of Anoka

State of Minnesota

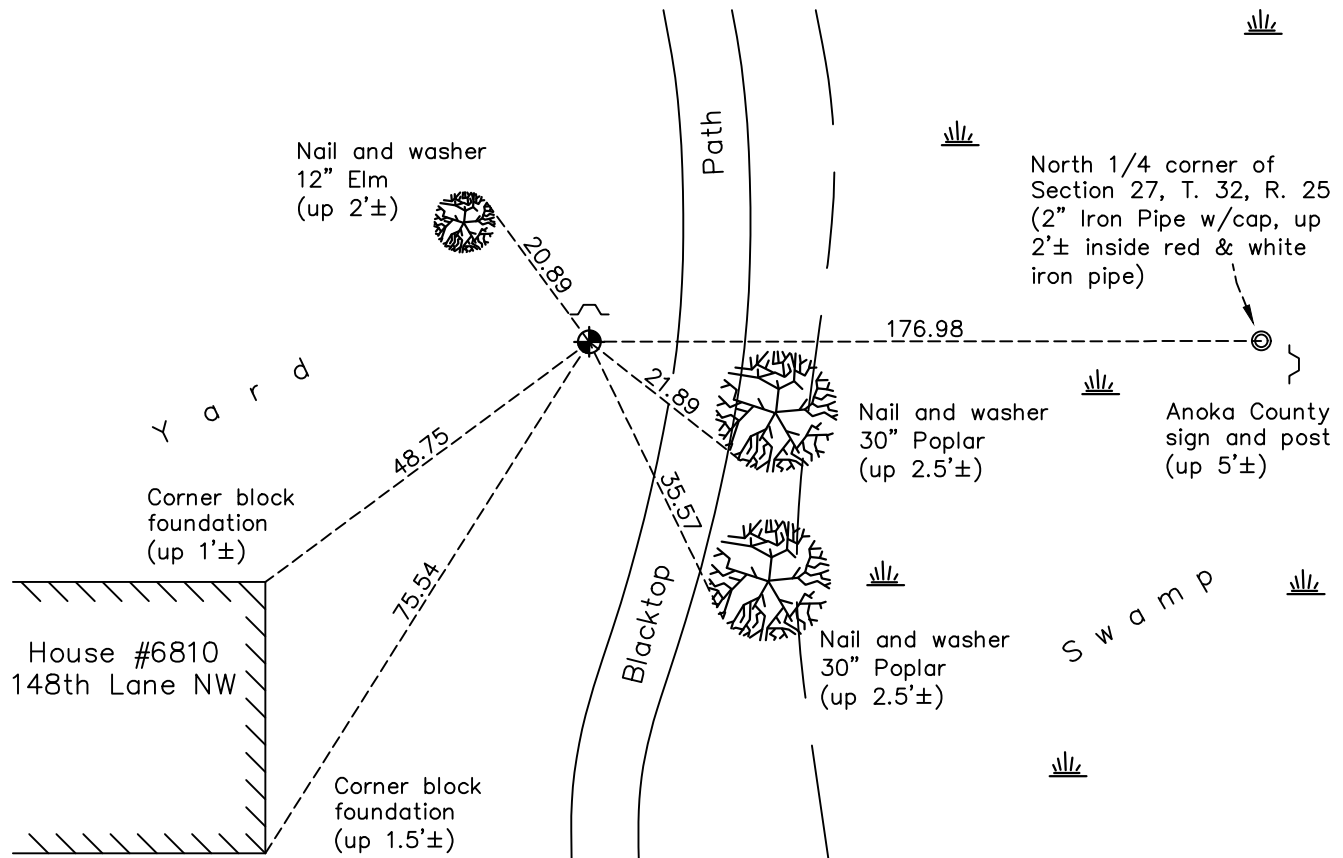
Witness Corner of Sec. 27 Township 32 Range 25  
(On north line of section)

On the 17th day of September, 1975, the described corner was evidenced by area resurvey

and to perpetuate the location of said corner, at the exact location thereof, a permanent marker was placed consisting of a cast iron monument with a sign and post on the north

AND on the 16th day of May, 2022, said permanent marker was found down 0.1'± and the ties were updated

Updated reference ties are as shown below.



Revision Date  
**1/05/2023**

N.A.D. 1983 Coordinates  
 (1996 Adjustment)

County Project Coordinates	
Northing	<u>175093.9843</u>
Easting	<u>455291.6230</u>
Date	<u>5/11/2022</u>

I hereby certify that this United States public land survey monument record is correct and complete to the best of my knowledge and belief.  
David Zieglmeier Date 2/22/23  
 David Zieglmeier Anoka County Surveyor  
 Minnesota License Number 46179

# HISTORY OF GOVERNMENT CORNER

Page No. 99A

County of Anoka

State of Minnesota

Witness Corner of Sec. 27 Township 32 Range 25  
(On north line of section)

## **CORNER HISTORY:**

September 17, 1975 - Set cast iron monument as witness corner to the North 1/4 corner using area resurvey. Also set sign and post on the north side of monument.

July 6, 1976 - Found cast iron monument witness corner.

June 25, 1979 - Found cast iron monument witness corner.

August 12, 1982 - Found cast iron monument witness corner.

June 28, 1988 - Found cast iron monument witness corner.

August 12, 1993 - Found cast iron monument witness corner.

May 4, 2000 - Found cast iron monument witness corner and iron pipe at location of North 1/4 corner. Established NAD 1983 (1996 adj.) Anoka County project coordinates by static GPS methods for both corners.

January 8, 2001 - Found cast iron monument witness corner and found red and white iron pipe up 1'± at location of North 1/4 corner. Updated distance between monuments.

March 2, 2011 - Found cast iron monument witness corner and found 2" iron pipe w/punch marked cap up 2'± at location of North 1/4 corner. Updated distance between monuments.

February 16, 2016 - Found cast iron monument witness corner and found 2" iron pipe w/punch marked cap up 2'± at location of North 1/4 corner. Updated distance between monuments.

January 5, 2021 - Found cast iron monument witness corner and found 2" iron pipe w/punch marked cap up 2'± at location of North 1/4 corner. Updated distance between monuments.

May 16, 2022 - Found cast iron monument witness corner down 0.1'± and updated ties.