

# CERTIFICATE OF LOCATION OF GOVERNMENT CORNER

County of Anoka

State of Minnesota

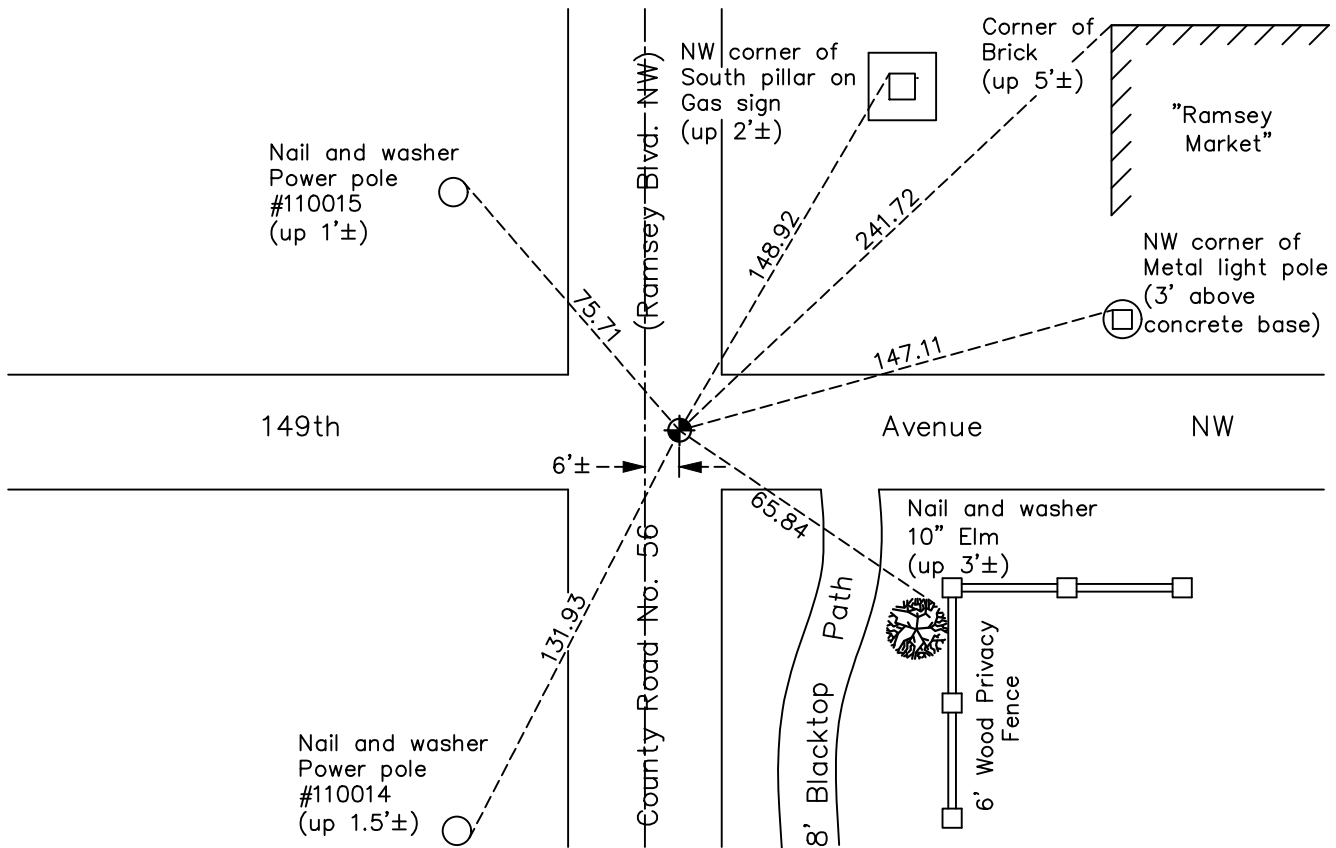
## Northwest Corner of Sec. 27 Township 32 Range 25

On the 24th day of July, 1969, the described corner was evidenced by a 1/2" iron pipe

and to perpetuate the location of said corner, at the exact location thereof, a permanent marker was placed consisting of a cast iron monument

AND on the 12th day of October, 2022, said permanent marker was found flush with surface and the ties were updated

Updated reference ties are as shown below.



Revision Date

1/05/2023

N.A.D. 1983 Coordinates  
(1996 Adjustment)

County Project Coordinates	
Northing	<u>175098.6417</u>
Easting	<u>452834.2316</u>
Date	<u>12/17/99</u>

I hereby certify that this United States public land survey monument record is correct and complete to the best of my knowledge and belief.

*David Zieglmeier* Date 2/22/23

David Zieglmeier Anoka County Surveyor  
Minnesota License Number 46179

# HISTORY OF GOVERNMENT CORNER

Page No. 100

County of Anoka

State of Minnesota

## Northwest Corner of Sec. 27 Township 32 Range 25

### **CORNER HISTORY:**

January 5, 1961 – Found 1/2" iron pipe in centerline of blacktop road and established ties to monument.

August 7, 1964 – Found 1/2" iron pipe and updated ties.

June 26, 1969 – Found 1/2" iron pipe down 0.1'± and 3'± west of centerline of road and updated ties. Set P.K. nails 2.00' north and east of iron pipe.

July 24, 1969 – Replaced 1/2" iron pipe with a cast iron monument set flush with the surface. Updated ties.

August 17, 1972 – Found cast iron monument and updated ties.

July 7, 1976 – Found cast iron monument and updated ties.

June 25, 1979 – Found cast iron monument and updated ties.

April 14, 1982 – Found cast iron monument and updated ties prior to road construction.

July 20, 1982 – Set cast iron monument flush with surface after road construction using ties. Set P.K. nails 2.00' north and east of monument.

July 17, 1985 – Found cast iron monument and updated ties.

June 17, 1988 – Found cast iron monument and updated ties.

August 6, 1993 – Found cast iron monument and updated ties.

December 17, 1999 – Found cast iron monument and established NAD 1983 (1996 Adjustment) Anoka County Project Coordinates by Static GPS methods. Updated ties.

April 30, 2010 – Found cast iron monument flush with the surface and updated ties.

May 30, 2014 – Updated ties and removed cast iron monument prior to road construction. Verified location of corner by VRS GPS methods.

July 10, 2014 – Set cast iron monument after road construction using ties. Verified location of corner by VRS GPS methods.

March 30, 2020 – Found cast iron monument and updated ties. Verified position of corner by VRS GPS method.

October 12, 2022 – Found cast iron monument flush, verified position by VRS GPS method and the ties were updated.