

CERTIFICATE OF LOCATION OF GOVERNMENT CORNER

County of Anoka

State of Minnesota

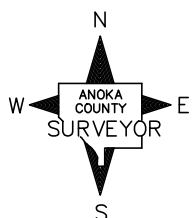
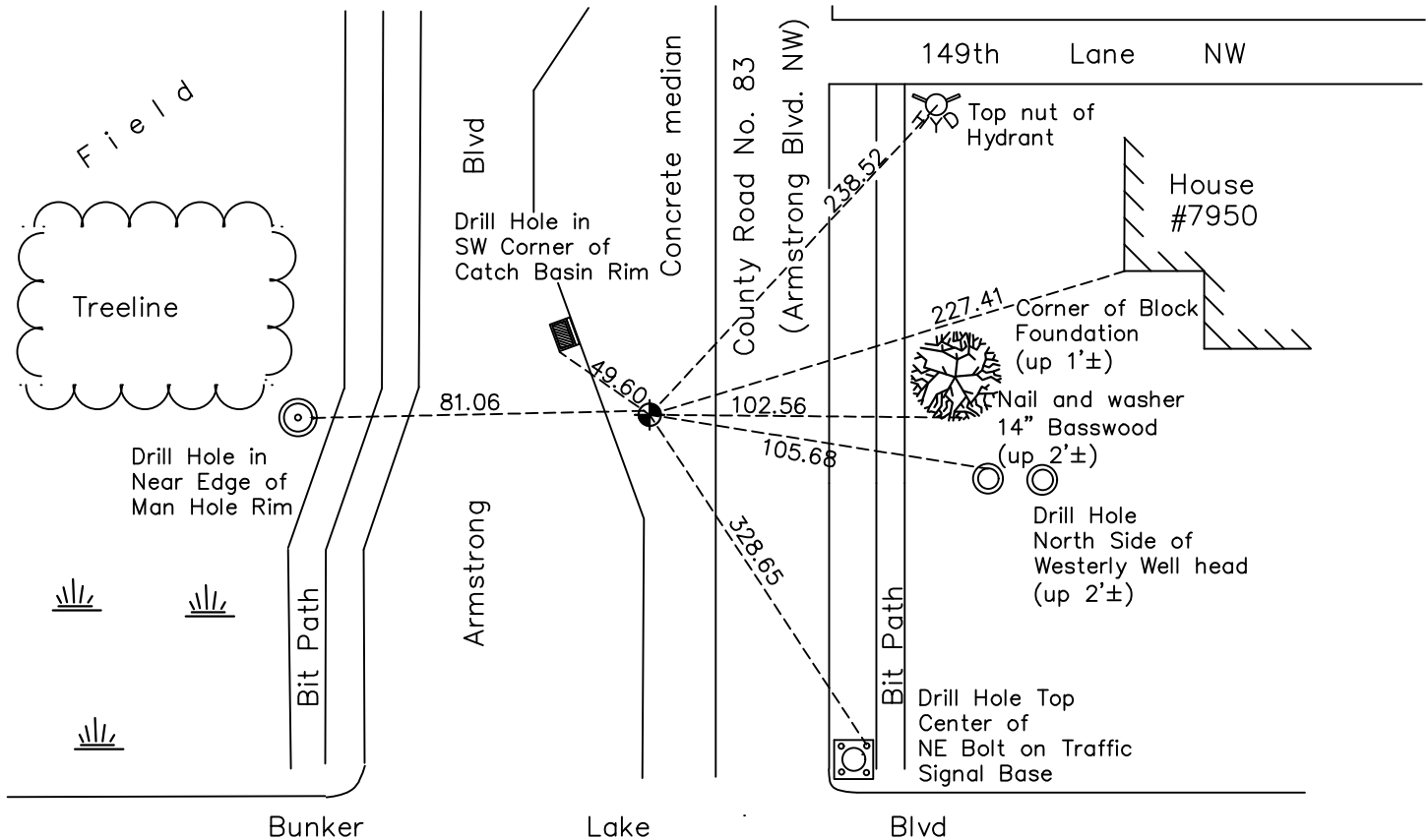
Southwest Corner of Sec. 21 Township 32 Range 25

On the 29th day of July, 1965, the described corner was evidenced by area resurvey

and to perpetuate the location of said corner, at the exact location thereof, a permanent marker was placed consisting of a cast iron monument

AND on the 12th day of May, 2023, said permanent marker was set cast iron monument after road construction, verified position using RTK GPS methods. Updated ties.

Updated reference ties are as shown below.



N.A.D. 1983 Coordinates
(1996 Adjustment)

County Project Coordinates	
Northing	175124.7273
Easting	447531.2156
Date	2/01/00

Revision Date
6/1/2023

I hereby certify that this United States public land survey monument record is correct and complete to the best of my knowledge and belief.
David Zieglmeier Date 7/19/23
 David Zieglmeier Anoka County Surveyor
 Minnesota License Number 46179

HISTORY OF GOVERNMENT CORNER

Page No. 102

County of Anoka

State of Minnesota

Southwest Corner of Sec. 21 Township 32 Range 25

CORNER HISTORY:

July 29, 1964 - Set cast iron monument using area resurvey and established ties to monument. Also set P.K. nails 2.00' north and east of monument.

June 20, 1969 - Found cast iron monument flush with the surface and updated ties.

July 27, 1972 - Found cast iron monument and updated ties.

September 11, 1972 - Raised cast iron monument and updated ties.

7/7/76, 6/25/79, 8/19/82, 7/17/85 - Found cast iron monument and updated ties.

June 13, 1988 - Set construction ties prior to road construction.

June 22, 1989 - Set cast iron monument after road construction using construction ties. Updated ties.

August 9, 1993 - Found cast iron monument and updated ties.

February 1, 2000 - Found cast iron monument and established NAD 1983 (1996 Adjustment) Anoka County Project Coordinates by Static GPS methods. Updated ties.

April 30, 2010 - Found cast iron monument flush with the surface and updated ties.

October 22, 2015 - Found cast iron monument missing.

October 26, 2015 - Reset position of corner with P.K. nail using ties and verified position by VRS GPS methods.

November 9, 2015 - Verified position of P.K. nail by Static GPS methods.

November 10, 2015 - Set cast iron monument in correct location using Static GPS coordinates. Updated ties.

March 30, 2020 - Found cast iron monument and updated ties. Verified position of corner by VRS GPS method.

May 12, 2023 - Set cast iron monument after road construction, verified position using RTK GPS methods. Updated ties. Job no. 22-131