

CERTIFICATE OF LOCATION OF GOVERNMENT CORNER

County of Anoka

State of Minnesota

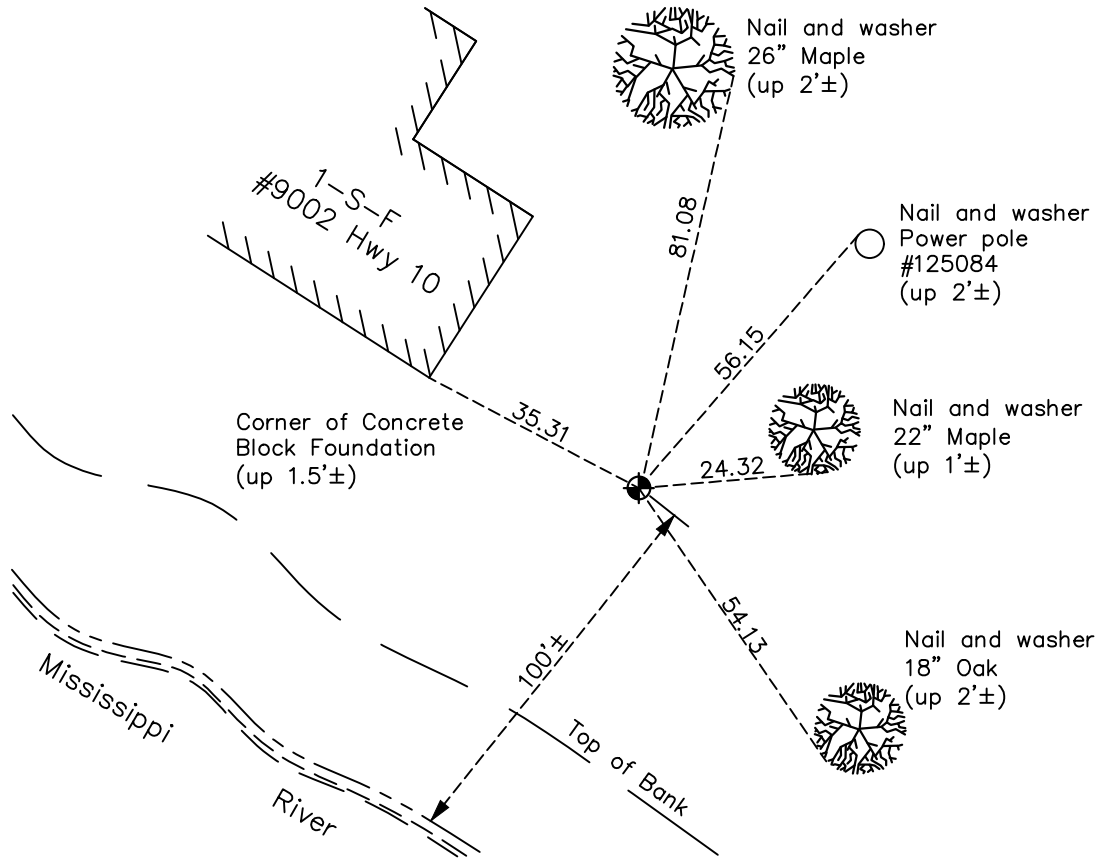
Witness Corner of Sec. 19 Township 32 Range 25
(On south line of section)

On the 5th day of May, 1987, the described corner was evidenced by an angle iron

and to perpetuate the location of said corner, at the exact location thereof, a permanent marker was placed consisting of a cast iron monument

AND on the 11th day of October, 2022, said permanent marker was found down 0.1' and the ties were updated

Updated reference ties are as shown below.



Revision Date
1/06/2023

N.A.D. 1983 Coordinates
(1996 Adjustment)

County Project Coordinates	
Northing	<u>175195.4176</u>
Easting	<u>440820.9998</u>
Date	<u>5/05/00</u>

I hereby certify that this United States public land survey monument record is correct and complete to the best of my knowledge and belief.

David Zieglmeier Date 2/22/23

David Zieglmeier Anoka County Surveyor
 Minnesota License Number 46179

HISTORY OF GOVERNMENT CORNER

Page No. 104A

County of Anoka

State of Minnesota

Witness Corner of Sec. 19 Township 32 Range 25
(On south line of section)

CORNER HISTORY:

May 5, 1987 – Found angle iron which agreed with area platting and highway right-of-way location. Replaced angle iron with a cast iron monument set flush with the surface and established ties to monument.

August 16, 1993 – Found cast iron monument and updated ties.

May 5, 2000 – Found cast iron monument and established NAD 1983 (1996 Adjustment) Anoka County Project Coordinates by Static GPS methods. Updated ties.

May 17, 2010 – Found cast iron monument down 0.1'± and updated ties.

October 2, 2015 – Found cast iron monument down 0.1'± and updated ties.

May 18, 2020 – Found cast iron monument down 0.1'± and updated ties. Verified position of witness corner by VRS GPS method.

October 11, 2022 – Found cast iron monument down 0.1'±, verified the position by GPS VRS method and the ties were updated.