

# CERTIFICATE OF LOCATION OF GOVERNMENT CORNER

County of Anoka

State of Minnesota

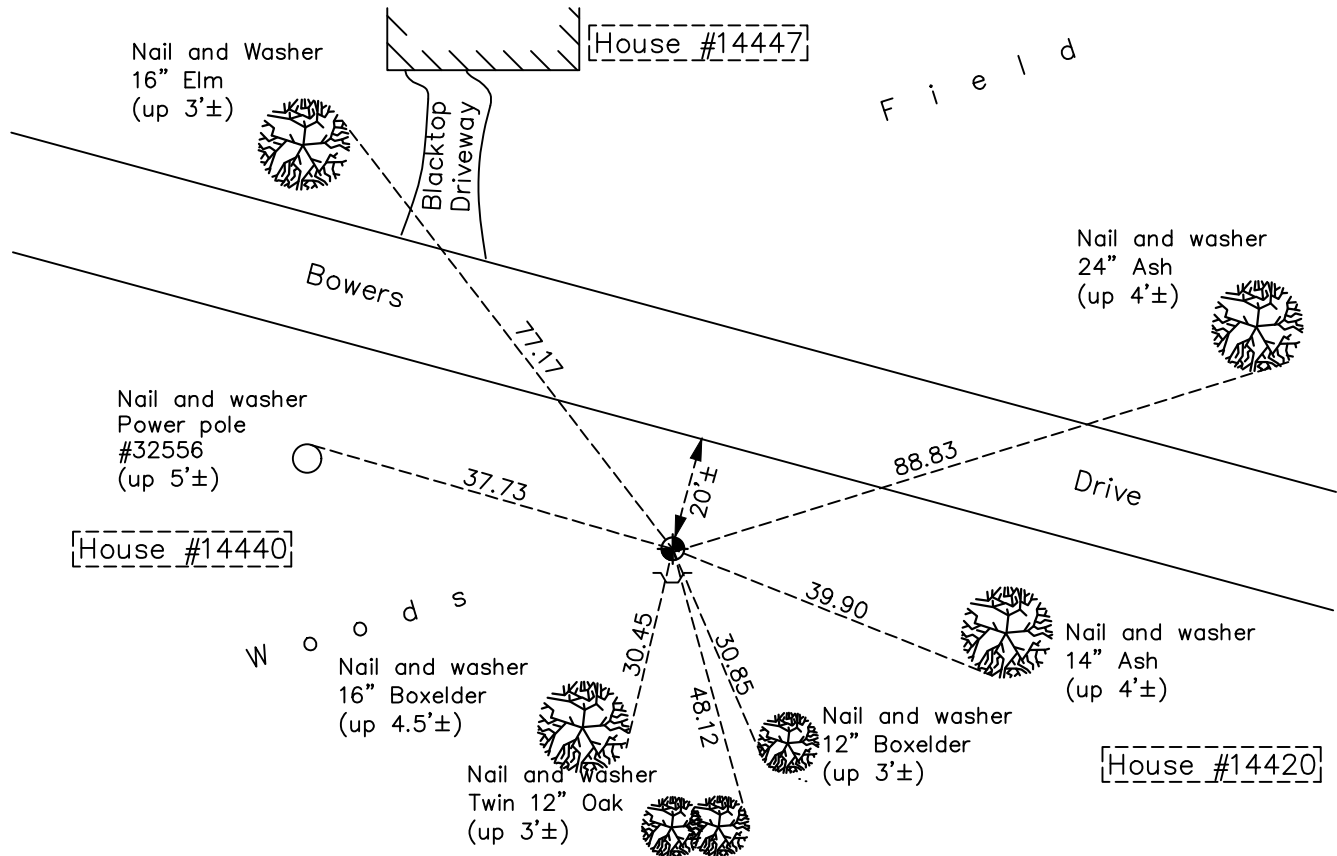
Witness Corner of Sec. 29 Township 32 Range 25  
(On west line of section)

On the 11th day of May, 1987, the described corner was evidenced by the survey of  
"Bowers Addition"

and to perpetuate the location of said corner, at the exact location thereof, a permanent marker was placed consisting of a cast iron monument

AND on the 11th day of October, 2022, said permanent marker was found down 0.1'± with a sign and post on the south side and the ties were updated

Updated reference ties are as shown below.



Revision Date  
1/06/2023

N.A.D. 1983 Coordinates  
(1996 Adjustment)

County Project Coordinates	
Northing	<u>172030.3760</u>
Easting	<u>442215.1294</u>
Date	<u>5/09/00</u>

I hereby certify that this United States public land survey monument record is correct and complete to the best of my knowledge and belief.  
*David Zieglmeier* Date 2/22/23  
 David Zieglmeier Anoka County Surveyor  
 Minnesota License Number 46179

# HISTORY OF GOVERNMENT CORNER

Page No. 105

County of Anoka

State of Minnesota

Witness Corner of Sec. 29 Township 32 Range 25  
(On west line of section)

## **CORNER HISTORY:**

May 11, 1987 – Set cast iron monument flush with the surface using Bowers Addition subdivision and established ties to monument. Also set sign and post on the south side of monument.

June 23, 1988 – Found cast iron monument and updated ties.

August 13, 1993 – Found cast iron monument and updated ties.

May 9, 2000 – Found cast iron monument with sign and post on the south side and established NAD 1983 (1996 Adjustment) Anoka County Project Coordinates by Static GPS methods. Updated ties.

April 13, 2010 – Found cast iron monument and updated ties.

October 21, 2015 – Found cast iron monument down  $0.2' \pm$  with a sign and post on the south side and updated ties.

May 6, 2020 – Found cast iron monument down  $0.2' \pm$  with a sign and post on the south side and updated ties.

October 11, 2022 – Found cast iron monument down  $0.1' \pm$ , verified position by VRS GPS method and the ties were updated.