

CERTIFICATE OF LOCATION OF GOVERNMENT CORNER

County of Anoka

State of Minnesota

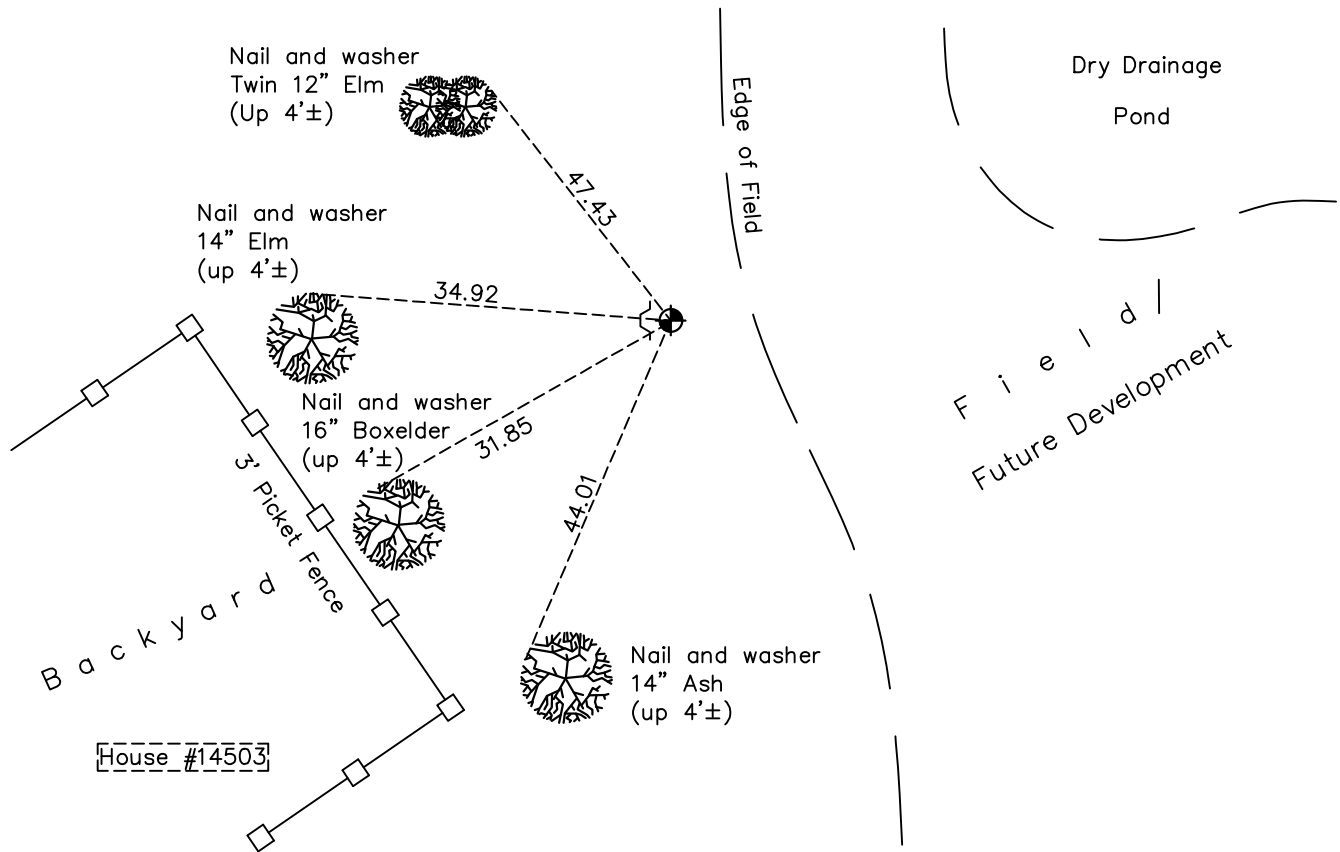
West 1/4 Corner of Sec. 29 Township 32 Range 25

On the 5th day of August, 1975, the described corner was evidenced by a concrete monument

and to perpetuate the location of said corner, at the exact location thereof, a permanent marker was placed consisting of a cast iron monument

AND on the 11th day of October, 2022, said permanent marker was found down 1.5'± with a sign and post 4'± to the West and the ties were updated

Updated reference ties are as shown below.



Revision Date
 1/06/2023

N.A.D. 1983 Coordinates
 (1996 Adjustment)

County Project Coordinates	
Northing	<u>172493.3255</u>
Easting	<u>442217.1358</u>
Date	<u>5/15/00</u>

I hereby certify that this United States public land survey monument record is correct and complete to the best of my knowledge and belief.
David Zieglmeier Date 2/22/23
 David Zieglmeier Anoka County Surveyor
 Minnesota License Number 46179

HISTORY OF GOVERNMENT CORNER

Page No. 106

County of Anoka

State of Minnesota

West 1/4 Corner of Sec. 29 Township 32 Range 25

CORNER HISTORY:

September 14, 1943 – Cartwright found concrete monument down 1'± and established ties to monument.

April 19, 1962 – Found 4" square concrete monument down 0.5'± and updated ties. Set 3/4" iron pipe on the north side of monument.

June 20, 1969 – Found concrete monument and updated ties.

August 7, 1972 – Found concrete monument and updated ties.

August 5, 1975– Replaced broken concrete monument with a cast iron monument set down 1.5'±. Updated ties.

July 7, 1976 – Found cast iron monument and updated ties.

June 22, 1979 – Found cast iron monument and updated ties.

August 13, 1982 – Found cast iron monument and updated ties.

July 25, 1985 – Found cast iron monument and updated ties.

June 27, 1988 – Found cast iron monument and updated ties.

August 13, 1993 – Found cast iron monument and updated ties.

May 15, 2000 – Found cast iron monument and established NAD 1983 (1996 Adjustment) Anoka County Project Coordinates by Static GPS methods. Updated ties.

April 22, 2010 – Found cast iron monument down 1.5'± with a sign and post 4'± west and updated ties.

October 21, 2015 – Found cast iron monument down 1.5'± with a sign and post 4'± west and updated ties.

May 14, 2020 – Found cast iron monument down 1.5'± with a sign and post 4'± west and updated ties.

October 11, 2022 – Found cast iron monument down 1.5'±, verified position by VRS GPS method and the ties were updated.