

CERTIFICATE OF LOCATION OF GOVERNMENT CORNER

County of Anoka

State of Minnesota

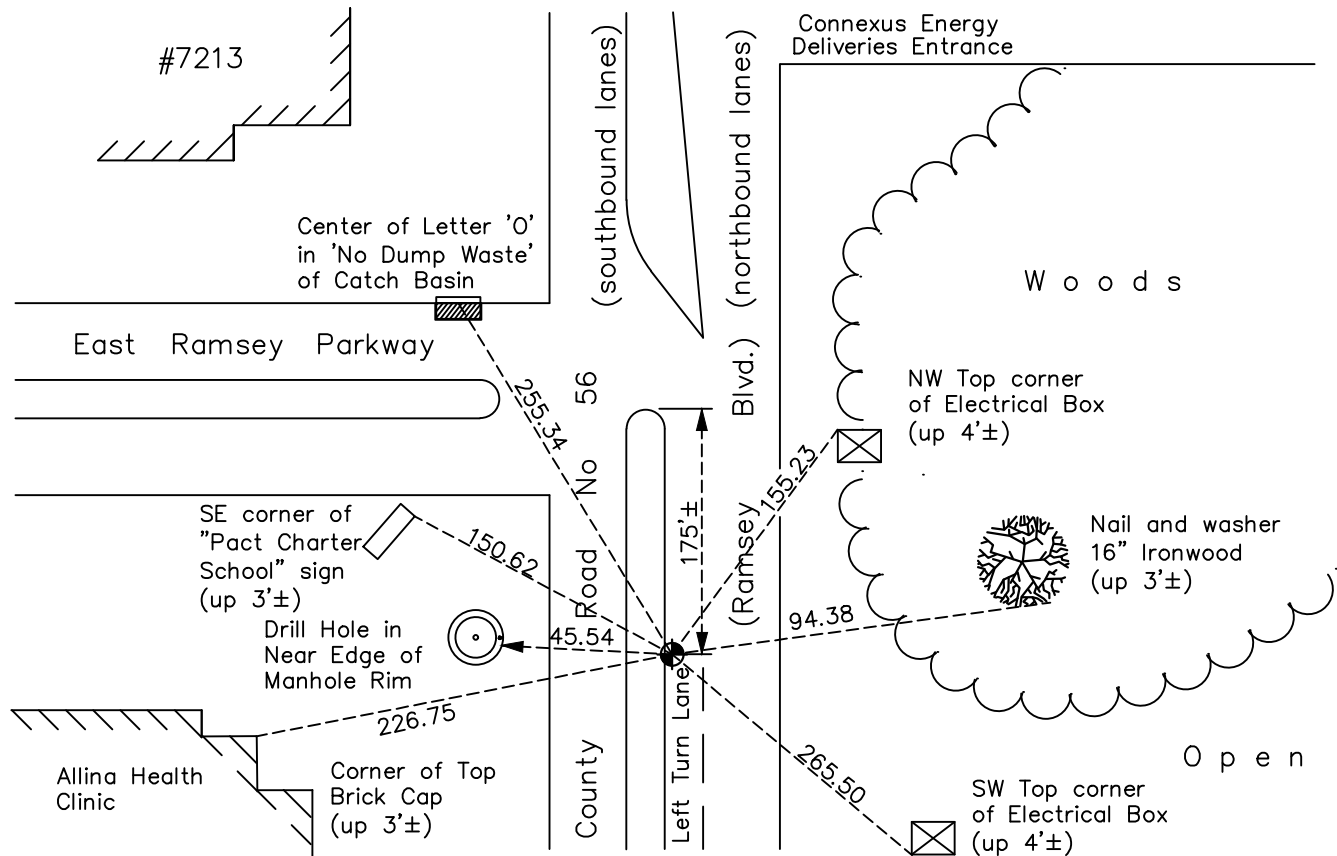
West 1/4 Corner of Sec. 27 Township 32 Range 25

On the 24th day of July, 1969, the described corner was evidenced by a pinched iron in blacktop

and to perpetuate the location of said corner, at the exact location thereof, a permanent marker was placed consisting of a cast iron monument

AND on the 12th day of October, 2022, said permanent marker was found flush, 2'± East of the median concrete curb face in the Turn Lane and the ties were updated

Updated reference ties are as shown below.



Revision Date

1/06/2023

N.A.D. 1983 Coordinates
(1996 Adjustment)

County Project Coordinates	
Northing	<u>172448.2597</u>
Easting	<u>452836.4972</u>
Date	<u>2/01/00</u>

I hereby certify that this United States public land survey monument record is correct and complete to the best of my knowledge and belief.

David Zieglmeier Date 2/22/23

David Zieglmeier Anoka County Surveyor
Minnesota License Number 46179

HISTORY OF GOVERNMENT CORNER

Page No. 108

County of Anoka

State of Minnesota

West 1/4 Corner of Sec. 27 Township 32 Range 25

CORNER HISTORY:

August 25, 1964 – Found pinched iron pipe set flush with the surface in a blacktop road. Established ties to iron pipe.

June 26, 1969 – Found pinched iron pipe down 0.1'± in blacktop road, 2'± west of centerline and updated ties. Set P.K. nails 2.00' north and east of iron pipe.

July 24, 1969 – Replaced pinched iron pipe with a cast iron monument set flush with the surface. Updated ties.

July 26, 1972 – Found cast iron monument and updated ties.

July 7, 1976 – Found cast iron monument and updated ties.

June 25, 1979 – Found cast iron monument and updated ties.

April 14, 1982 – Updated ties prior to road construction.

July 30, 1982 – Set cast iron monument flush with the surface after road construction. Set P.K. nails 2.00' north and east and updated ties.

June 16, 1988 – Found cast iron monument and updated ties.

August 4, 1993 – Found cast iron monument and updated ties.

February 1, 2000 – Found cast iron monument and established NAD 1983 (1996 Adjustment) Anoka County Project Coordinates by Static GPS methods. Updated ties.

June 23, 2004 – Set construction ties and removed cast iron monument prior to road construction.

December 7, 2004 – Set P.K. nail after road construction using ties. Verified location of corner by Static GPS methods on December 8, 2004.

August 31, 2005 – Replaced P.K. nail with a cast iron monument. Updated ties.

April 23, 2010 – Found P.K. nail. Need to reset cast iron monument which falls in concrete apron and updated ties.

November 10, 2015 – Found cast iron monument, date set unknown, and updated ties.

March 18, 2020 – Found cast iron monument and verified position by VRS GPS method. Ties were updated.

October 12, 2022 – Found cast iron monument flush, verified position by VRS GPS method and the ties were updated.