

CERTIFICATE OF LOCATION OF GOVERNMENT CORNER

County of Anoka

State of Minnesota

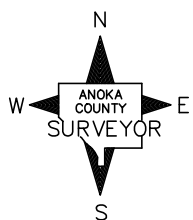
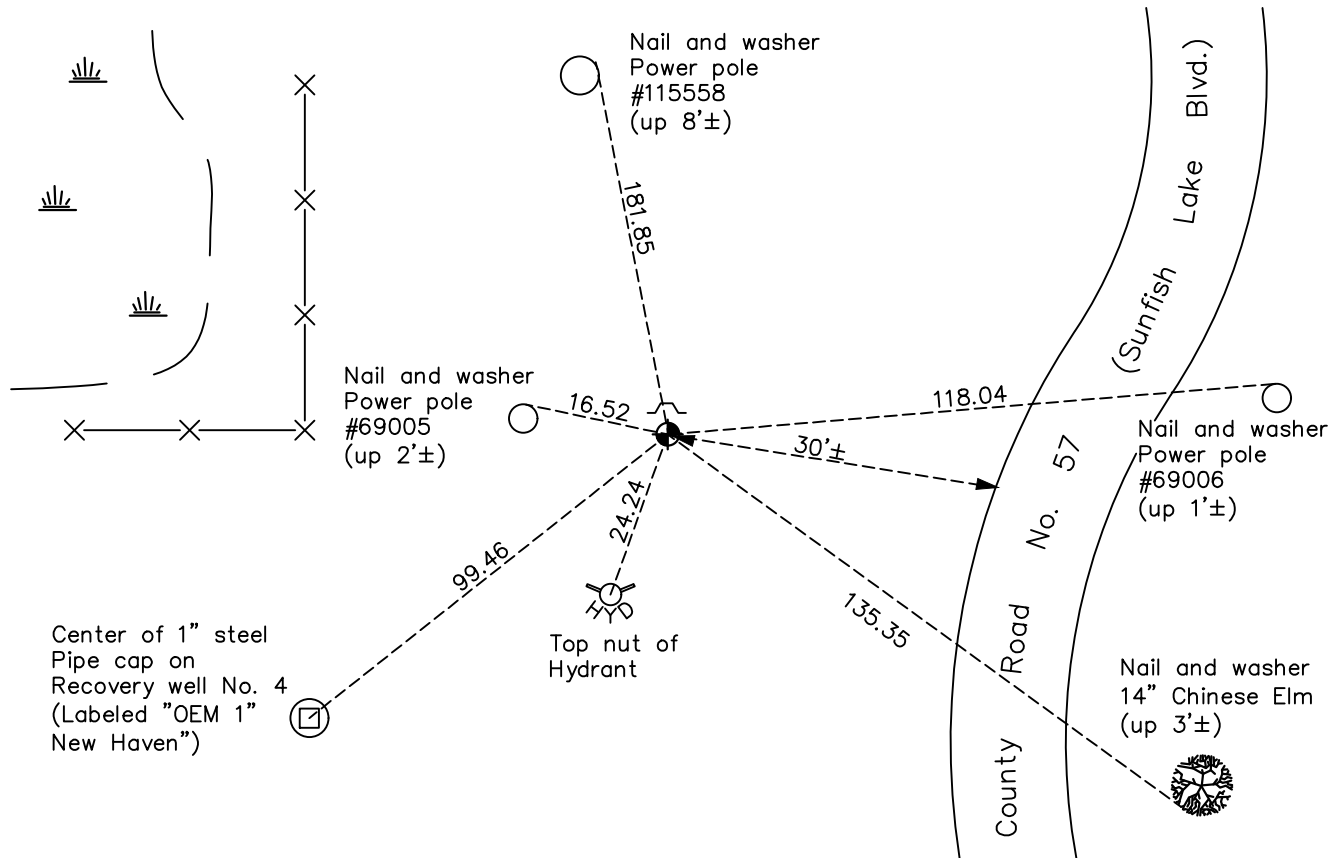
West 1/4 Corner of Sec. 26 Township 32 Range 25

On the 25th day of June, 1969, the described corner was evidenced by 1" iron pipe

and to perpetuate the location of said corner, at the exact location thereof, a permanent marker was placed consisting of a cast iron monument

AND on the 13th day of October, 2022, said permanent marker was found down 0.1' with a sign and post on the north side and the ties were updated

Updated reference ties are as shown below.



N.A.D. 1983 Coordinates
(1996 Adjustment)

County Project Coordinates	
Northing	<u>172466.3990</u>
Easting	<u>458082.6741</u>
Date	<u>8/30/99</u>

Revision Date
1/06/2023

I hereby certify that this United States public land survey monument record is correct and complete to the best of my knowledge and belief.

David Zieglmeier Date 2/22/23

David Zieglmeier Anoka County Surveyor
Minnesota License Number 46179

HISTORY OF GOVERNMENT CORNER

Page No. 110

County of Anoka

State of Minnesota

West 1/4 Corner of Sec. 26 Township 32 Range 25

CORNER HISTORY:

August 28, 1959 – Found 1” iron pipe set flush with the surface. Established ties to iron pipe.

August 6, 1964 – Found 1” iron pipe and updated ties.

June 25, 1969 – Replaced 1” iron pipe with a cast iron monument set up 0.1'±. Updated ties.

July 28, 1972 – Found cast iron monument and updated ties.

June 7, 1976 – Set cast iron monument down 0.1'± after road construction using construction ties, date set unknown. Updated ties.

October 31, 1980 – Found cast iron monument and updated ties.

August 17, 1982 – Found cast iron monument and updated ties.

May 16, 1984 – Found cast iron monument and updated ties.

July 17, 1985 – Found cast iron monument and updated ties.

June 16, 1988 – Found cast iron monument and updated ties.

August 12, 1993 – Found cast iron monument and updated ties.

May 24, 1999 – Found cast iron monument and updated ties.

August 30, 1999 – Found cast iron monument and established NAD 1983 (1996 Adjustment) Anoka County Project Coordinates by Static GPS methods.

April 3, 2000 – Set construction ties and removed cast iron monument prior to road construction.

June 9, 2000 – Found cast iron monument, date reset unknown, and updated ties.

April 1, 2010 – Found cast iron monument down 0.1'± with a sign and post on the north side and updated ties.

August 17, 2015 – Found cast iron monument and updated ties. Verified location of corner by VRS GPS methods.

March 27, 2020 – Found cast iron monument down 0.1'± and verified location of corner by VRS GPS method. Ties were updated.

October 13, 2022 – Found cast iron monument down 0.1'±, verified location of position by VRS GPS method and the ties were updated.