

# CERTIFICATE OF LOCATION OF GOVERNMENT CORNER

County of Anoka

State of Minnesota

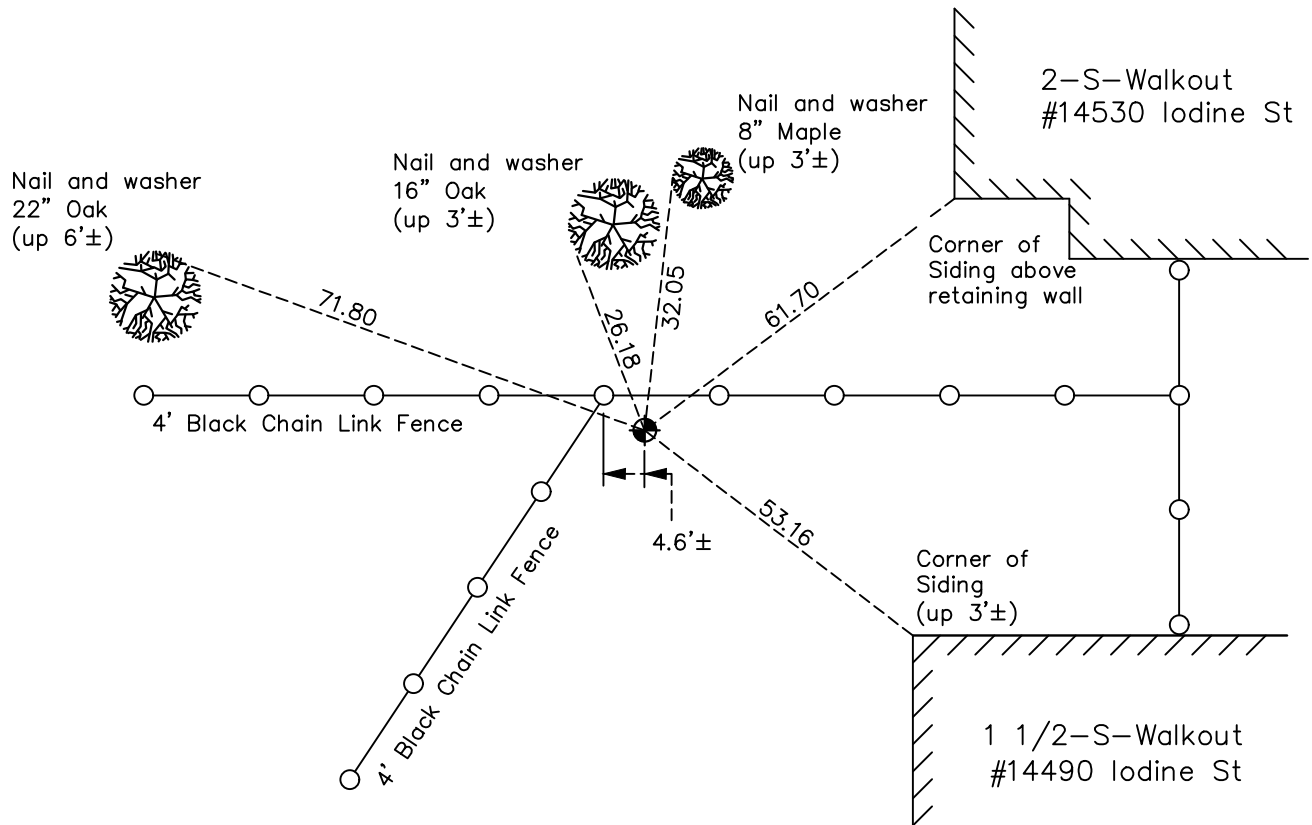
## West 1/4 Corner of Sec. 25 Township 32 Range 25

On the 19th day of April, 1963, the described corner was evidenced by a 3/4" iron pipe

and to perpetuate the location of said corner, at the exact location thereof, a permanent marker was placed consisting of a cast iron monument

AND on the 24th day of October, 2022, said permanent marker was found flush with surface and ties were updated. Sign and post had been removed by property owner.

Updated reference ties are as shown below.



Revision Date  
1/06/2023

N.A.D. 1983 Coordinates  
(1996 Adjustment)

County Project Coordinates	
Northing	<u>172487.2306</u>
Easting	<u>463294.4519</u>
Date	<u>1/11/00</u>

I hereby certify that this United States public land survey monument record is correct and complete to the best of my knowledge and belief.

*David Zieglmeier* Date 2/22/23

David Zieglmeier Anoka County Surveyor  
Minnesota License Number 46179

# HISTORY OF GOVERNMENT CORNER

Page No. 111

County of Anoka

State of Minnesota

## West 1/4 Corner of Sec. 25 Township 32 Range 25

### **CORNER HISTORY:**

March 25, 1963 – Set 3/4" iron pipe using area resurvey and established ties to monument.

April 19, 1963 – Replaced 3/4" iron pipe with a cast iron monument set up 0.1'±. Updated ties.

August 11, 1964 – Found cast iron monument and updated ties.

June 30, 1969 – Found cast iron monument and updated ties.

August 18, 1972 – Found cast iron monument and updated ties.

July 8, 1976 – Found cast iron monument and updated ties.

June 26, 1979 – Found cast iron monument and updated ties.

August 17, 1982 – Found cast iron monument and updated ties.

July 26, 1985 – Found cast iron monument and updated ties.

July 8, 1988 – Found cast iron monument and updated ties.

August 19, 1993 – Found cast iron monument and updated ties.

January 11, 2000 – Found cast iron monument with a sign and post on the north side and established NAD 1983 (1996 Adjustment) Anoka County Project Coordinates by Static GPS methods. Updated ties.

April 22, 2010 – Found cast iron monument flush with the surface and updated ties. Found sign and post near corner removed from corner location and brought it back.

October 26, 2015 – Found cast iron monument flush with the surface and updated ties.

May 18, 2020 – Found cast iron monument with the surface and verified position of corner by VRS GPS method. Ties were updated.

October 24, 2022 – Found cast iron monument flush with surface, verified position by VRS GPS method and the ties were updated.