

CERTIFICATE OF LOCATION OF GOVERNMENT CORNER

County of Anoka

State of Minnesota

Witness Corner of Sec. 25 Township 32 Range 25

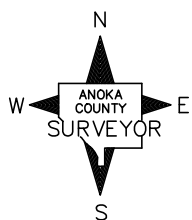
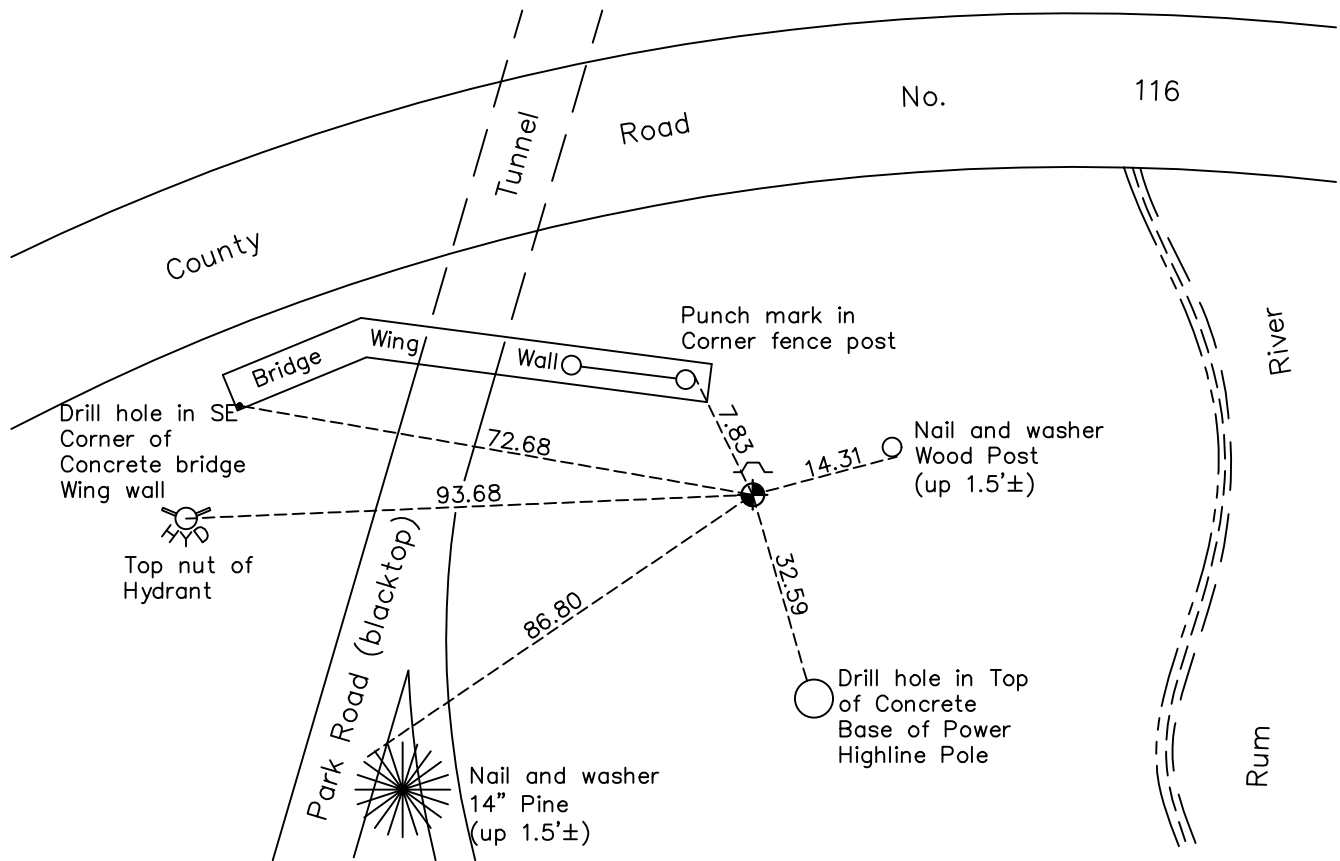
(On south line of section)

On the 24th day of September, 1963, the described corner was evidenced by area resurvey

and to perpetuate the location of said corner, at the exact location thereof, a permanent marker was placed consisting of a cast iron monument

AND on the 19th day of October, 2022, said permanent marker was found down 0.1' with a sign and post on the north side and the ties were updated

Updated reference ties are as shown below.



Revision Date

1/09/2023

N.A.D. 1983 Coordinates
(1996 Adjustment)

County Project Coordinates

Northing 169847.9430

Easting 467692.8343

Date 4/11/00

I hereby certify that this United States public land survey monument record is correct and complete to the best of my knowledge and belief.

David Zieglmeier Date 2/22/23

David Zieglmeier Anoka County Surveyor

Minnesota License Number 46179

HISTORY OF GOVERNMENT CORNER

Page No. 113

County of Anoka

State of Minnesota

Witness Corner of Sec. 25 Township 32 Range 25
(On south line of section)

CORNER HISTORY:

September 24, 1963 – Set cast iron monument flush with the surface using area resurvey and established ties to monument.

August 11, 1964 – Found cast iron monument and updated ties.

July 1, 1969 – Found cast iron monument with steel post up 4'± on west side of monument and updated ties.

August 22, 1972 – Found cast iron monument and updated ties.

July 8, 1976 – Found cast iron monument and updated ties.

June 26, 1979 – Found cast iron monument and updated ties.

August 17, 1982 – Found cast iron monument and updated ties.

July 23, 1985 – Found cast iron monument and updated ties.

June 29, 1988 – Found cast iron monument and updated ties.

August 23, 1989 – Set construction ties prior to road construction.

August 15, 1991 – Set cast iron monument flush with the surface and a sign and post on the north side of monument after road construction using construction ties. Updated ties.

April 11, 2000 – Found cast iron monument and established NAD 1983 (1996 Adjustment) Anoka County Project Coordinates by Static GPS methods. Updated ties.

April 1, 2010 – Found cast iron monument and updated ties.

August 17, 2015 – Found cast iron monument with a sign and post on the north side and updated ties. Verified location of corner by VRS GPS methods.

March 27, 2020 – Found cast iron monument with a sign and post on the north side and updated ties. Verified location of corner by VRS GPS methods.

October 19, 2022 – Found cast iron monument down 0.1'±, verified position of Corner by VRS GPS method and the ties were updated.