

# CERTIFICATE OF LOCATION OF GOVERNMENT CORNER

County of Anoka

State of Minnesota

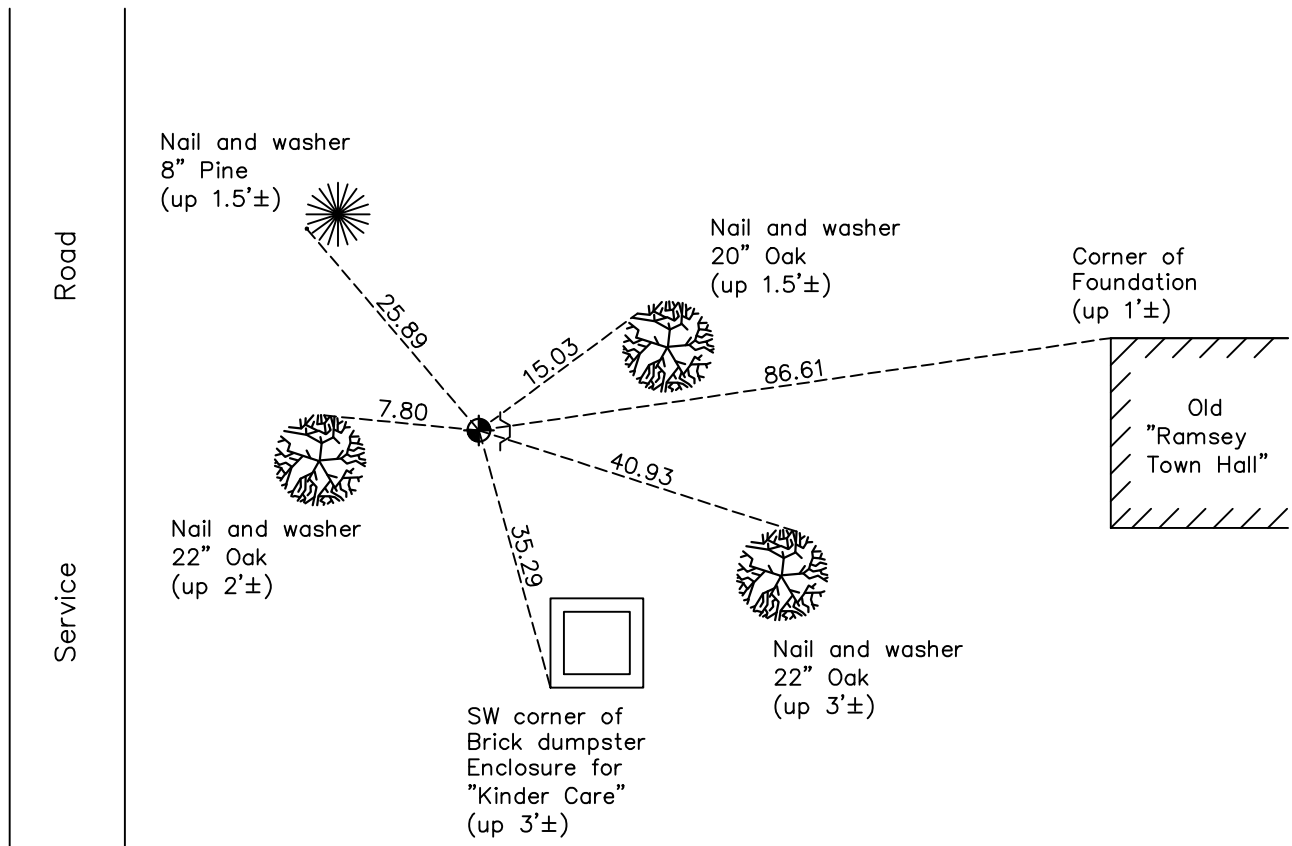
## North 1/4 Corner of Sec. 36 Township 32 Range 25

On the 24th day of June, 1969, the described corner was evidenced by a 1" iron pipe

and to perpetuate the location of said corner, at the exact location thereof, a permanent marker was placed consisting of a cast iron monument

AND on the 25th day of October, 2022, said permanent marker was found down 0.7'± with a sign and post on the East side and the ties were updated

Updated reference ties are as shown below.



N

S

Revision Date

1/09/2023

N.A.D. 1983 Coordinates  
(1996 Adjustment)

County Project Coordinates	
Northing	169863.6154
Easting	465907.2953
Date	1/11/00

I hereby certify that this United States public land survey monument record is correct and complete to the best of my knowledge and belief.

*David Zieglmeier* Date 2/22/23

David Zieglmeier Anoka County Surveyor  
Minnesota License Number 46179

# HISTORY OF GOVERNMENT CORNER

Page No. 114

County of Anoka

State of Minnesota

## North 1/4 Corner of Sec. 36 Township 32 Range 25

### **CORNER HISTORY:**

July 28, 1959 – Found 1” iron pipe and established ties to iron pipe.

August 12, 1964 – Found 1” iron pipe up 0.2'± and 0.5'± east of fence corner with a metal fence post 5'± east of iron pipe. Updated ties.

June 24, 1969 – Replaced 1” iron pipe with a cast iron monument set up 0.1'±. Updated ties.

September 2, 1972 – Found cast iron monument and updated ties.

July 8, 1976 – Found cast iron monument and updated ties.

June 26, 1979 – Found cast iron monument and updated ties.

August 17, 1982 – Found cast iron monument and updated ties.

Date unknown – Found cast iron monument with a sign and post on the north side and updated ties.

June 29, 1988 – Found cast iron monument and updated ties.

August 11, 1993 – Found cast iron monument and updated ties.

January 11, 2000 – Found cast iron monument and established NAD 1983 (1996 Adjustment) Anoka County Project Coordinates by Static GPS methods. Updated ties.

April 1, 2010 – Found cast iron monument down 0.6'± with a sign and post on the north side and updated ties.

August 17, 2015 – Found cast iron monument down 0.7'± with a sign and post on the east side and updated ties.

March 27, 2020 – Found cast iron monument down 0.7'± with a sign and post on the east side and updated ties. Verified position of corner by VRS GPS method.

October 25, 2022 – Found cast iron monument down 0.7'±, verified position of corner by VRS GPS method and the ties were updated.