

# CERTIFICATE OF LOCATION OF GOVERNMENT CORNER

County of Anoka

State of Minnesota

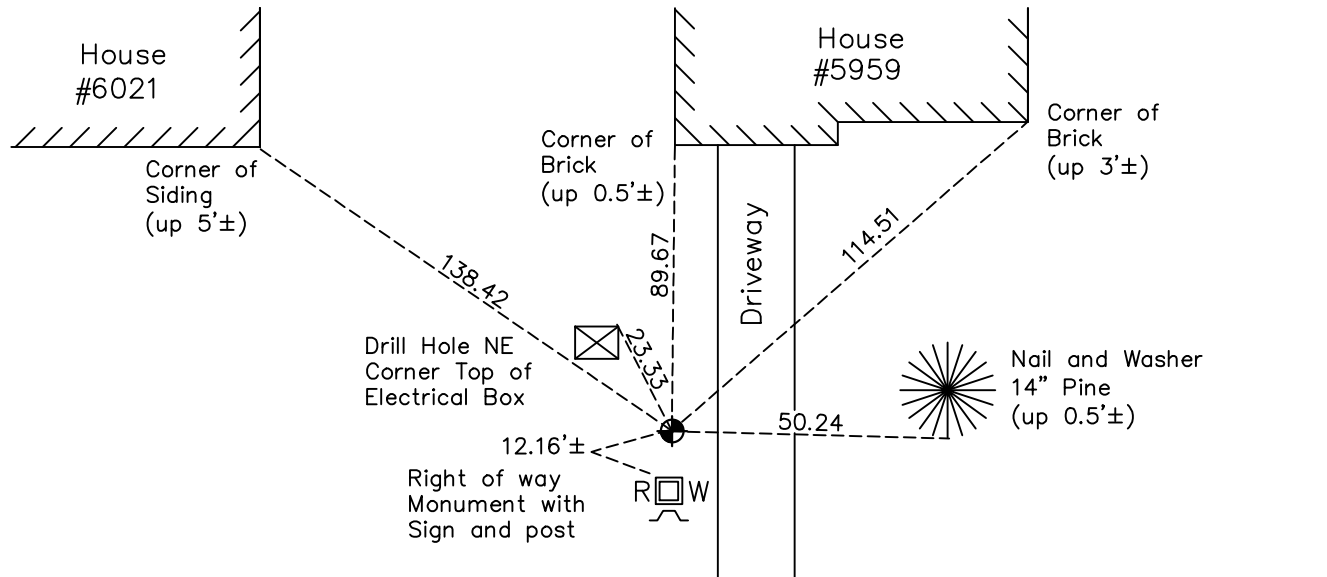
## North $\frac{1}{4}$ Corner of Sec. 35 Township 32 Range 25

On the 2nd day of October, 1962, the described corner was evidenced by a concrete monument

and to perpetuate the location of said corner, at the exact location thereof, a permanent marker was placed consisting of a cast iron monument set above the concrete monument

AND on the 13th day of October, 2022, said permanent marker was found down 0.3' and the ties were updated.

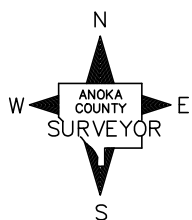
Updated reference ties are as shown below.



C.S.A.H. No. 116 West Bound (Bunker Lake Blvd)

Concrete Median

C.S.A.H. No. 116 East Bound



Revision Date  
1/09/2023

N.A.D. 1983 Coordinates  
(1996 Adjustment)

County Project Coordinates	
Northing	<u>169819.4814</u>
Easting	<u>460650.8069</u>
Date	<u>1/11/00</u>

I hereby certify that this United States public land survey monument record is correct and complete to the best of my knowledge and belief.

*David Zieglmeier* Date 2/22/23

David Zieglmeier Anoka County Surveyor  
Minnesota License Number 46179

# HISTORY OF GOVERNMENT CORNER

Page No. 116

County of Anoka

State of Minnesota

## North 1/4 Corner of Sec. 35 Township 32 Range 25

### **CORNER HISTORY:**

September 22, 1945 – Cartwright found concrete monument and established ties to monument.

February 9, 1960 – Found concrete monument down 0.5'± and updated ties.

October 2, 1962 – Found concrete monument down 1'±. Lowered concrete monument and set a cast iron monument on top of it. Cast iron monument was set flush with the surface. Updated ties.

August 7, 1964 – Found cast iron monument and updated ties.

June 24, 1969 – Found cast iron monument flush with the surface and updated ties.

August 2, 1972 – Found cast iron monument and updated ties.

July 8, 1976 – Found cast iron monument and updated ties.

June 22, 1979 – Found cast iron monument and updated ties.

August 17, 1982 – Found cast iron monument and updated ties.

July 24, 1985 – Found cast iron monument and updated ties.

June 30, 1988 – Found cast iron monument and updated ties.

August 4, 1993 – Found cast iron monument and updated ties.

January 11, 2000 – Found cast iron monument and established NAD 1983 (1996 Adjustment) Anoka County Project Coordinates by Static GPS methods. Updated ties.

April 1, 2010 – Found cast iron monument with top broken off.

January 25, 2011 – Replaced broken cast iron monument with a solid cast iron monument after exposing the concrete monument below and verifying location of corner by Static GPS methods. Verified location of new cast iron monument by VRS GPS methods. Updated ties.

August 17, 2015 – Found cast iron monument and updated ties. Verified location of corner by VRS GPS methods.

March 27, 2020 – Found cast iron monument down 0.3 ± and updated ties. Verified location of corner by VRS GPS methods.

October 13, 2022 – Found cast iron monument down 0.3'±, verified position of Corner by VRS GPS method and the ties were updated.