

CERTIFICATE OF LOCATION OF GOVERNMENT CORNER

County of Anoka

State of Minnesota

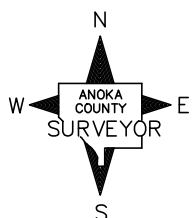
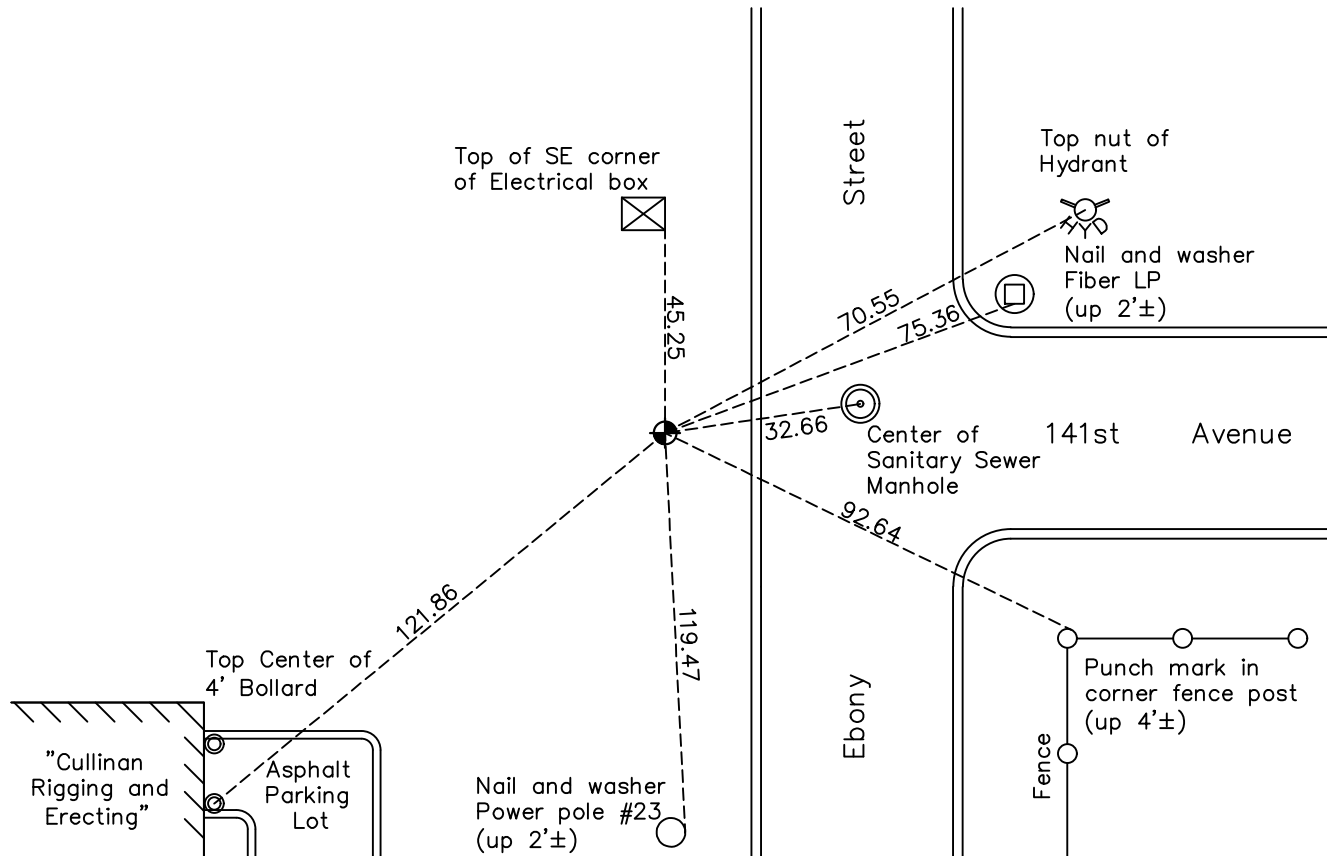
South 1/4 Corner of Sec. 27 Township 32 Range 25

On the 25th day of April, 1969, the described corner was evidenced by a 2" iron pipe

and to perpetuate the location of said corner, at the exact location thereof, a permanent marker was placed consisting of a cast iron monument

AND on the 12th day of October, 2022, said permanent marker was found down 0.2' and the ties were updated

Updated reference ties are as shown below.



Revision Date
 1/09/2023

N.A.D. 1983 Coordinates
 (1996 Adjustment)

County Project Coordinates	
Northing	169809.4406
Easting	455449.0495
Date	5/05/00

I hereby certify that this United States public land survey monument record is correct and complete to the best of my knowledge and belief.

David Zieglmeier Date 2/22/23

David Zieglmeier Anoka County Surveyor
 Minnesota License Number 46179

HISTORY OF GOVERNMENT CORNER

Page No. 118

County of Anoka

State of Minnesota

South 1/4 Corner of Sec. 27 Township 32 Range 25

CORNER HISTORY:

July 7, 1946 – Cartwright found concrete monument and established ties to monument.

January 5, 1961 – Found 2" iron pipe flush with the surface at bottom of cut. Concrete monument is missing. Updated ties.

April 25, 1969 – Reset position of corner with cast iron monument set flush with the surface using area resurvey. Set steel fence post up $3' \pm$ on north side of monument. Updated ties.

August 7, 1972 – Found cast iron monument and updated ties.

July 8, 1976 – Found cast iron monument and updated ties.

June 26, 1979 – Found cast iron monument and updated ties.

May 20, 1983 – Reset position of corner with cast iron monument and updated ties. Set sign and post on north side of monument.

August 19, 1993 – Found cast iron monument and updated ties.

May, 5, 2000 – Found cast iron monument with a sign and post on the north side and established NAD 1983 (1996 Adjustment) Anoka County Project Coordinates by Static GPS methods. Updated ties.

May 29, 2001 – Set construction ties and removed cast iron monument prior to road construction.

September 18, 2002 – Found cast iron monument with a sign and post on the west side and updated ties.

Date unknown – Found 1/2" iron pipe and updated ties. Sign and post is missing.

August 17, 2015 – Found 1/2" iron pipe and updated ties. Sign and post is missing.

September 11, 2015 – Verified location of 1/2" iron pipe by Static GPS methods.

September 15, 2015 – Replaced 1/2" iron pipe (LS #24332/ LS #43808) with a cast iron monument and updated ties. Verified location of corner by VRS GPS methods.

March 18, 2020 – Found cast iron monument down $0.2' \pm$ and the ties were updated. verified location of corner by VRS GPS method.

October 12, 2022 – Found cast iron monument down $0.2' \pm$, verified position of Corner with VRS GPS method and the ties were updated.