

# CERTIFICATE OF LOCATION OF GOVERNMENT CORNER

County of Anoka

State of Minnesota

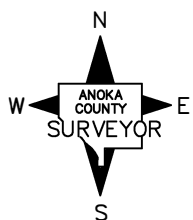
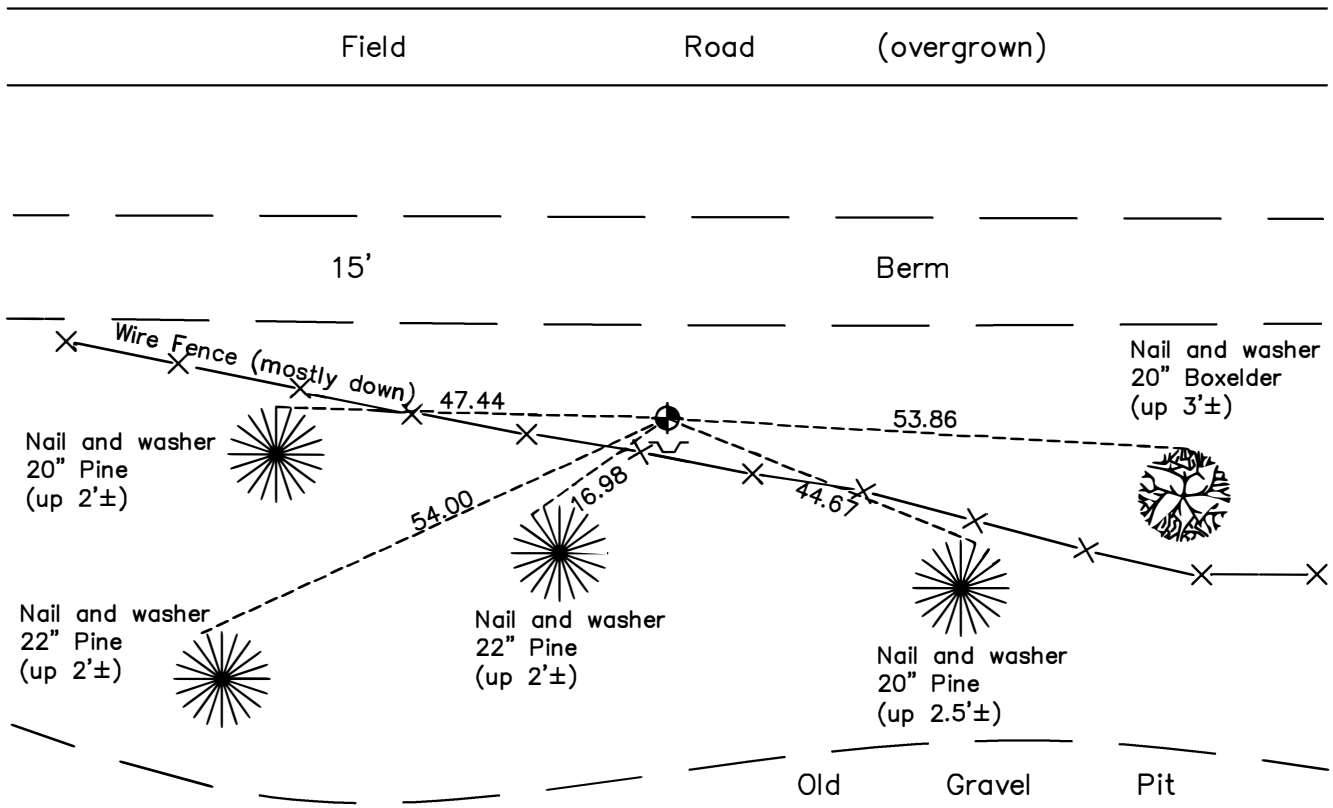
## South 1/4 Corner of Sec. 28 Township 32 Range 25

On the 10th day of May, 1944, the described corner was evidenced by a concrete monument

and to perpetuate the location of said corner, at the exact location thereof, a permanent marker was placed consisting of a cast iron monument found June 27, 1988

AND on the 12th day of October, 2022, said permanent marker was found down 1.5' with a sign and post on the south side and the ties were updated

Updated reference ties are as shown below.



Revision Date  
1/09/2023

N.A.D. 1983 Coordinates  
 (1996 Adjustment)

County Project Coordinates	
Northing	<u>169797.6862</u>
Easting	<u>450181.4580</u>
Date	<u>12/22/99</u>

I hereby certify that this United States public land survey monument record is correct and complete to the best of my knowledge and belief.

*David Zieglmeier* Date 2/22/23

David Zieglmeier Anoka County Surveyor  
 Minnesota License Number 46179

# HISTORY OF GOVERNMENT CORNER

Page No. 120

County of Anoka

State of Minnesota

## South 1/4 Corner of Sec. 28 Township 32 Range 25

### **CORNER HISTORY:**

May 10, 1944 – Cartwright found concrete monument and established ties to monument.

August 24, 1964 – Found 4" square concrete monument flush with the surface and updated ties.

June 26, 1969 – Found concrete monument and set 1" iron pipe on north side of monument. Updated ties.

August 7, 1972 – Found concrete monument and updated ties.

July 8, 1976 – Found concrete monument and updated ties.

June 22, 1979 – Found concrete monument and updated ties.

August 18, 1982 – Found concrete monument and updated ties.

July 26, 1985 – Found concrete monument and updated ties.

June 27, 1988 – Found cast iron monument, date set unknown, and updated ties.

August 20, 1993 – Found cast iron monument and updated ties.

December 22, 1999 – Found cast iron monument with a sign and post on the north side and established NAD 1983 (1996 Adjustment) Anoka County Project Coordinates by Static GPS methods. Updated ties.

April 29, 2010 – Found cast iron monument down 1.5'± with a sign and post on the south side and updated ties.

October 1, 2015 – Found cast iron monument down 1.5'± with a sign and post on the south side and updated ties.

March 18, 2020 – Found cast iron monument down 1.5'± with a sign and post on the south side and updated ties. Verified position of corner by VRS GPS method.

October 12, 2022 – Found cast iron monument down 1.5'±, verified the position of the corner by VRS GPS method and the ties were updated.