

# CERTIFICATE OF LOCATION OF GOVERNMENT CORNER

County of Anoka

State of Minnesota

## Witness Corner of Sec. 33 Township 32 Range 25

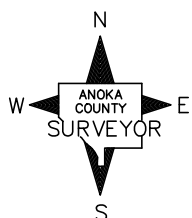
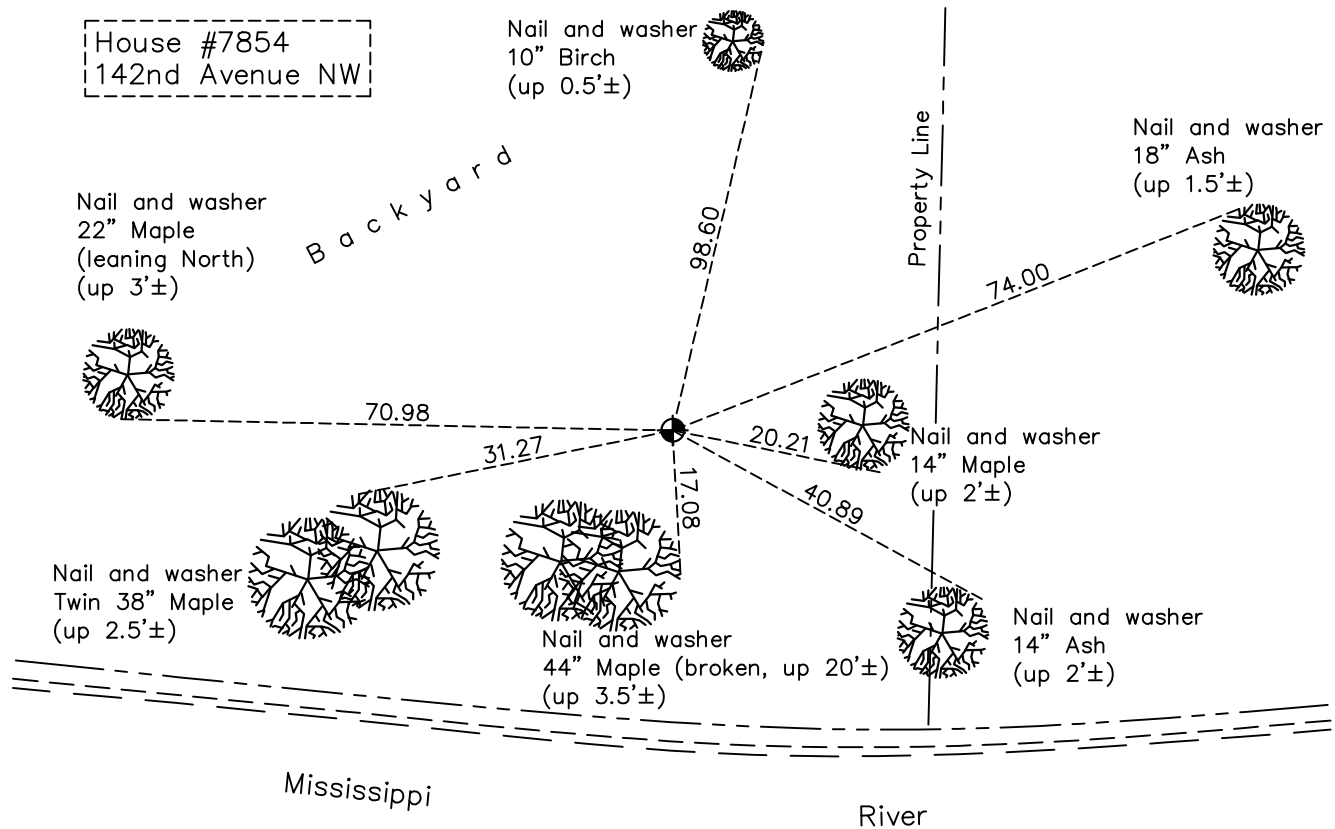
(On north line of NW1/4)

On the 15th day of August, 1985, the described corner was evidenced by a 4" square concrete monument

and to perpetuate the location of said corner, at the exact location thereof, a permanent marker was placed consisting of a cast iron monument

AND on the 24th day of October, 2022, said permanent marker was found down 0.5'± and the ties were updated

Updated reference ties are as shown below.



Revision Date  
 1/09/2023

N.A.D. 1983 Coordinates  
(1996 Adjustment)

County Project Coordinates	
Northing	169787.7692
Easting	448591.8391
Date	4/26/00

I hereby certify that this United States public land survey monument record is correct and complete to the best of my knowledge and belief.

*David Zieglmeier* Date 2/22/23

David Zieglmeier Anoka County Surveyor  
 Minnesota License Number 46179

# HISTORY OF GOVERNMENT CORNER

Page No. 121

County of Anoka

State of Minnesota

Witness Corner of Sec. 33 Township 32 Range 25  
(On north line of NW1/4)

## **CORNER HISTORY:**

May 10, 1944 – Cartwright found concrete monument and established ties to monument.

April 17, 1962 – Found 4" square concrete monument flush with the surface and updated ties.

June 26, 1969 – Found concrete monument and updated ties.

August 7, 1972 – Found concrete monument and updated ties.

July 8, 1976 – Found concrete monument and updated ties.

June 22, 1979 – Found concrete monument and updated ties.

August 15, 1985 – Replaced broken concrete monument with a cast iron monument set down 0.3'±. Updated ties.

June 27, 1988 – Found cast iron monument and updated ties.

August 20, 1993 – Found cast iron monument and updated ties.

April 26, 2000 – Found cast iron monument and established NAD 1983 (1996 Adjustment) Anoka County Project Coordinates by Static GPS methods. Updated ties.

May 19, 2010 – Found cast iron monument and updated ties.

October 20, 2015 – Found cast iron monument down 0.5'± and updated ties.

May 20, 2020 – Found cast iron monument down 0.5'± and updated ties. Verified position of corner by VRS GPS method.

October 24, 2022 – Found cast iron monument down 0.5'±, verified the position of the corner by VRS GPS method and the ties were updated.