

CERTIFICATE OF LOCATION OF GOVERNMENT CORNER

County of Anoka

State of Minnesota

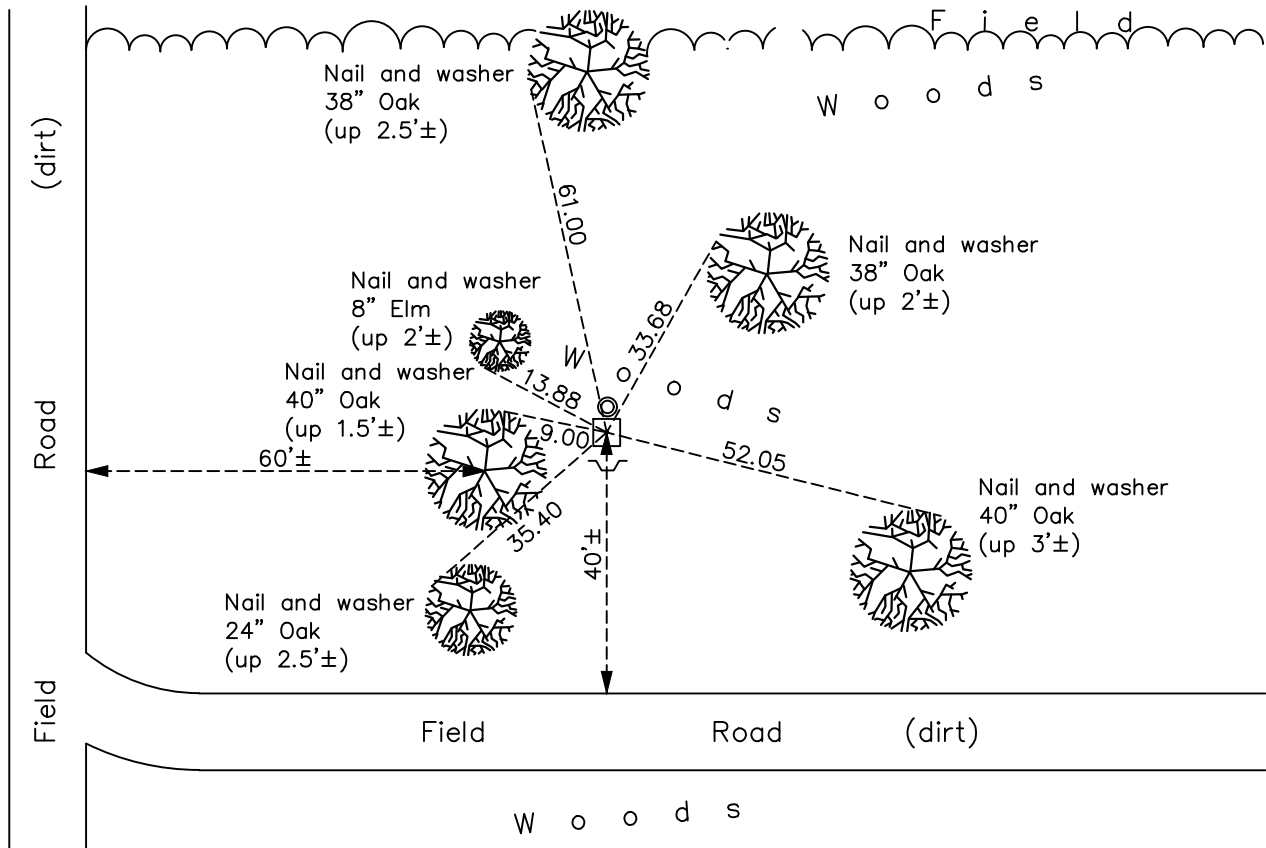
South $\frac{1}{4}$ Corner of Sec. 29 Township 32 Range 25

On the 14th day of September, 1943, the described corner was evidenced by a 4" square concrete monument

and to perpetuate the location of said corner, at the exact location thereof, a permanent marker was placed consisting of the same concrete monument with a 3/4" iron pipe on the north side

AND on the 11th day of October, 2022, said permanent marker was found down 0.3' with a sign and post on the south side and the ties were updated

Updated reference ties are as shown below.



Revision Date
1/11/2023

N.A.D. 1983 Coordinates
(1996 Adjustment)

County Project Coordinates	
Northing	<u>169849.3789</u>
Easting	<u>444857.5742</u>
Date	<u>1/12/01</u>

I hereby certify that this United States public land survey monument record is correct and complete to the best of my knowledge and belief.

David Zieglmeier Date 2/22/23

David Zieglmeier Anoka County Surveyor
Minnesota License Number 46179

HISTORY OF GOVERNMENT CORNER

Page No. 122

County of Anoka

State of Minnesota

South 1/4 Corner of Sec. 29 Township 32 Range 25

CORNER HISTORY:

September 14, 1943 – Cartwright found concrete monument flush with the surface and established ties to monument.

April 19, 1962 – Found 4" square concrete monument flush with the surface and set a 3/4" iron pipe on the north side of monument. Updated ties.

August 12, 1964 – Found concrete monument and updated ties.

June 20, 1969 – Found concrete monument down 0.2'± and updated ties.

August 18, 1972 – Found concrete monument and updated ties.

July 8, 1976 – Found concrete monument and updated ties.

June 22, 1979 – Found concrete monument and updated ties.

August 16, 1982 – Found concrete monument and updated ties.

June 24, 1988 – Found concrete monument and updated ties.

August 20, 1993 – Found concrete monument and updated ties.

January 12, 2001 – Found 4" square concrete monument with a 3/4" iron pipe on the north side and a sign and post on the south side. Established NAD 1983 (1996 Adjustment) Anoka County Project Coordinates by Static GPS methods. Updated ties.

May 17, 2010 – Found concrete monument down 0.3'± with a sign and post on the south side and updated ties.

October 2, 2015 – Found 4" square concrete monument down 0.3'± with a 3/4" iron pipe on the north side and a sign and post on the south side. Updated ties.

May 28, 2020 – Found 4" square concrete monument down 0.3'± with a 3/4" iron pipe on the north side and a sign and post on the south side. Updated ties.

October 11, 2022 – Found 4" square concrete monument down 0.3'±, verified location of corner by VRS GPS method and the ties were updated.