

# CERTIFICATE OF LOCATION OF GOVERNMENT CORNER

County of Anoka

State of Minnesota

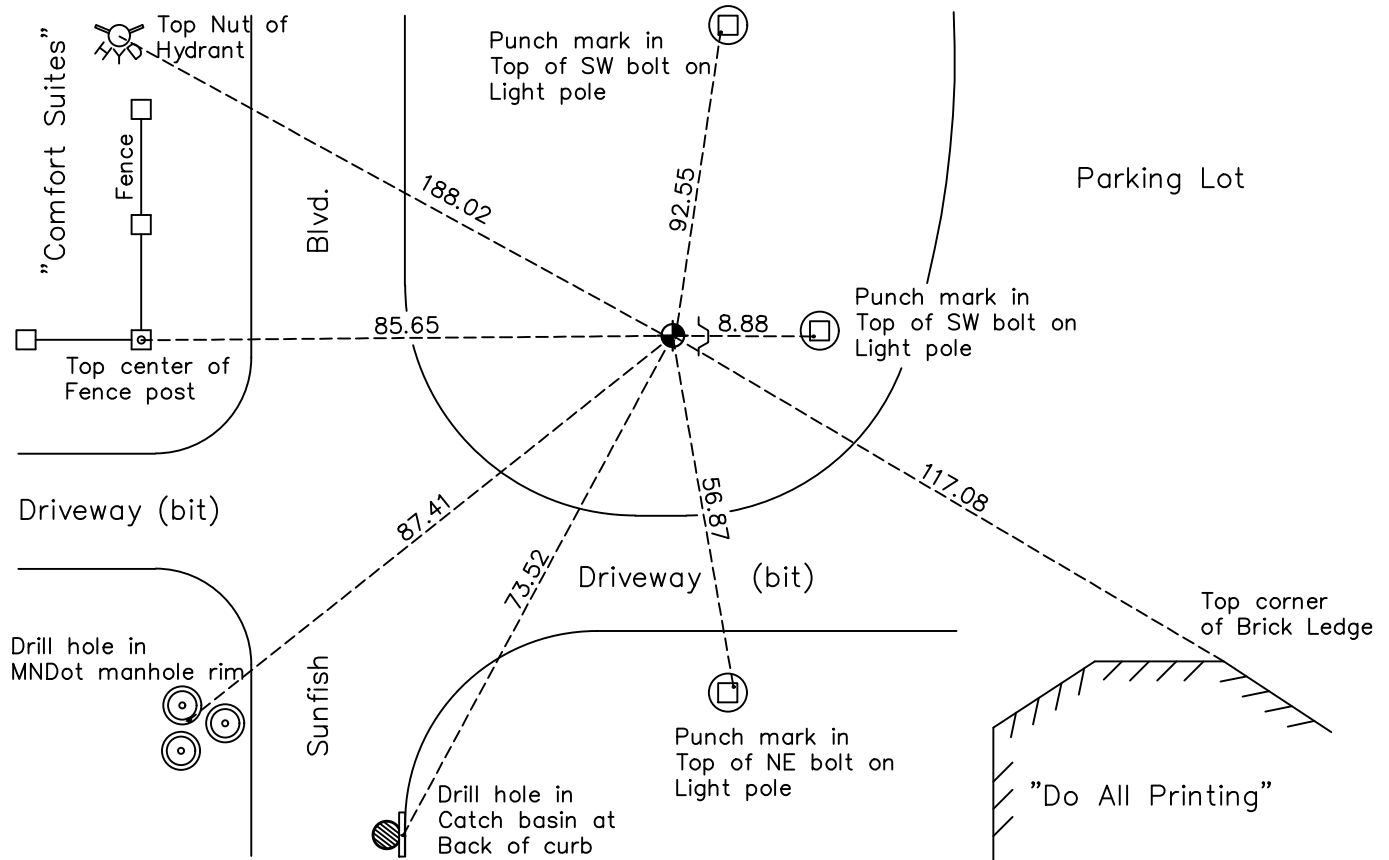
## West 1/4 Corner of Sec. 35 Township 32 Range 25

On the 14th day of May, 1986, the described corner was evidenced by a 4" square concrete monument

and to perpetuate the location of said corner, at the exact location thereof, a permanent marker was placed consisting of a cast iron monument

AND on the 13th day of October, 2022, said permanent marker was found down 0.5'± with sign and post on east side and ties were updated

Updated reference ties are as shown below.



Revision Date  
 1/11/2023

N.A.D. 1983 Coordinates  
 (1996 Adjustment)

County Project Coordinates	
Northing	167159.6853
Easting	458081.9614
Date	8/30/99

I hereby certify that this United States public land survey monument record is correct and complete to the best of my knowledge and belief.  
*David Zieglmeier* Date 2/22/23  
 David Zieglmeier Anoka County Surveyor  
 Minnesota License Number 46179

# HISTORY OF GOVERNMENT CORNER

Page No. 125

County of Anoka

State of Minnesota

## West 1/4 Corner of Sec. 35 Township 32 Range 25

### **CORNER HISTORY:**

June 27, 1944 – Cartwright found concrete monument and established ties to monument.

April 16, 1962 – Found 4" square concrete monument up 0.1'± and updated ties.

August 12, 1964 – Found concrete monument and updated ties.

June 26, 1969 – Found concrete monument and updated ties.

August 4, 1972 – Found concrete monument and updated ties.

July 8, 1976 – Found concrete monument and updated ties.

August 17, 1982 – Found concrete monument and updated ties.

July 17, 1985 – Found concrete monument and updated ties.

May 14, 1986 – Replaced concrete monument with a cast iron monument and updated ties. Set sign and post on the south side of monument.

September 8, 1989 – Replaced cast iron monument set flush with the surface and updated ties.

August 10, 1993 – Found cast iron monument and updated ties.

August 30, 1999 – Found cast iron monument and established NAD 1983 (1996 Adjustment) Anoka County Project Coordinates by Static GPS methods. Updated ties.

April 5, 2010 – Found cast iron monument broken and updated ties.

January 25, 2011 – Replaced broken cast iron monument with a solid cast iron monument and updated ties. Verified location of corner by Static GPS methods. Set sign and post on the east side of monument.

October 20, 2015 – Found cast iron monument down 0.5'± with a sign and post on the east side and updated ties.

March 18, 2020 – Found cast iron monument down 0.5'± with a sign and post on the east side and updated ties.

October 13, 2022 – Found cast iron monument down 0.5'±, verified the position of the corner by VRS GPS method and the ties were updated.