

CERTIFICATE OF LOCATION OF GOVERNMENT CORNER

County of Anoka

State of Minnesota

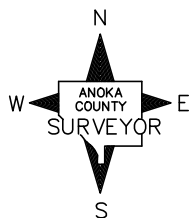
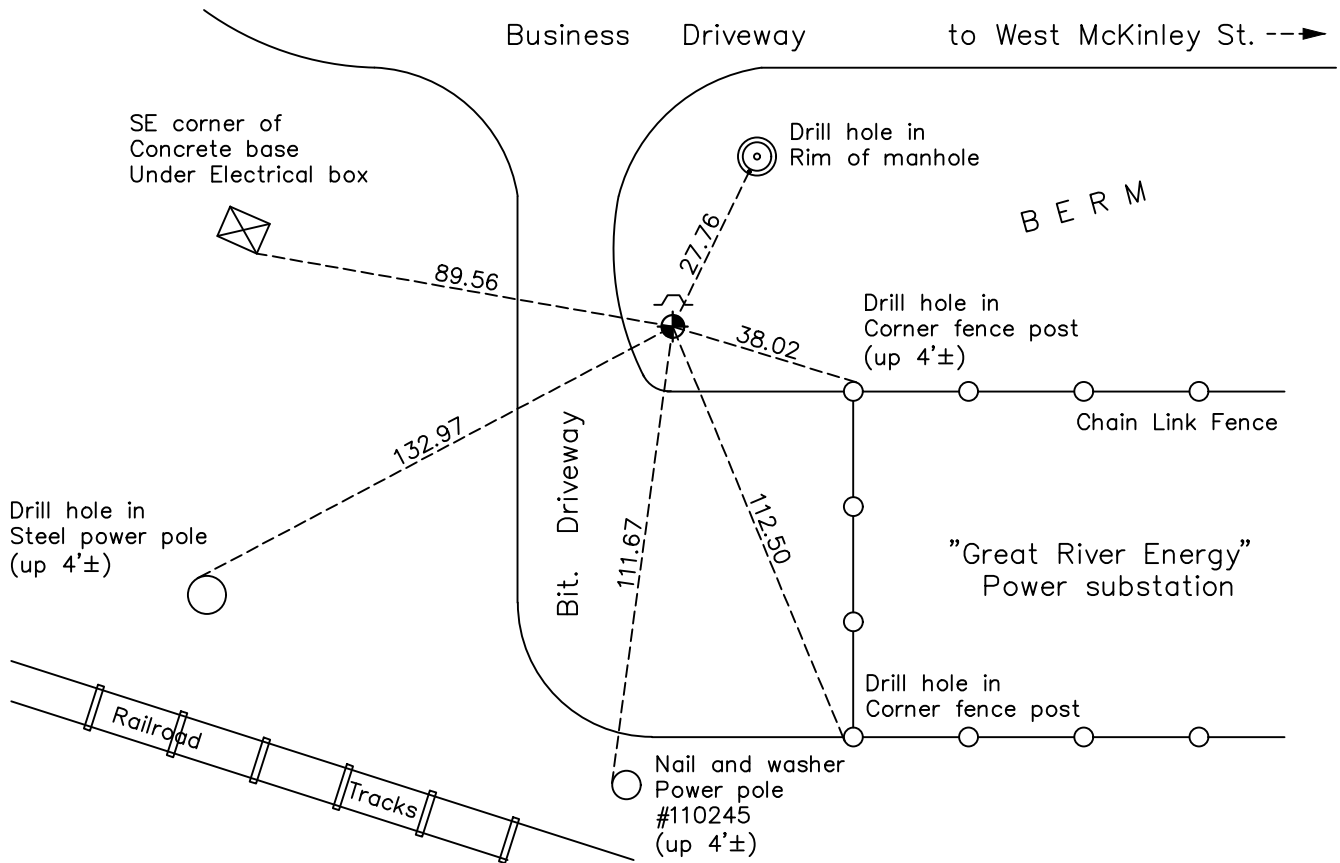
Center Corner of Sec. 35 Township 32 Range 25

On the 3rd day of October, 1962, the described corner was evidenced by area resurvey

and to perpetuate the location of said corner, at the exact location thereof, a permanent marker was placed consisting of a Judicial cast iron monument down 1'± with a sign and post on the north side

AND on the 18th day of December, 2020, said permanent marker was found down 0.1'± and the ties were updated. Checked position by VRS GPS methods.

Updated reference ties are as shown below.



Revision Date
9/20/2021

N.A.D. 1983 Coordinates
(1996 Adjustment)

County Project Coordinates	
Northing	<u>167180.1096</u>
Easting	<u>460635.4627</u>
Date	<u>4/06/00</u>

I hereby certify that this United States public land survey monument record is correct and complete to the best of my knowledge and belief.

David Zieglmeier Date 7/24/23

David M. Zieglmeier, Anoka County Surveyor
Minnesota License Number 46179

HISTORY OF GOVERNMENT CORNER

Page No. 126

County of Anoka

State of Minnesota

Center Corner of Sec. 35 Township 32 Range 25

CORNER HISTORY:

October 3, 1962 - Set judicial cast iron monument as determined by U.S. per court order. Established ties to monument. Set green "T" post 0.5'± north of monument.

August 12, 1964 - Found judicial cast iron monument and updated ties.

June 26, 1969 - Found judicial cast iron monument and updated ties.

August 8, 1972 - Found judicial cast iron monument and updated ties.

July 8, 1976 - Found judicial cast iron monument and updated ties.

June 27, 1979 - Found judicial cast iron monument and updated ties.

July 27, 1980 - Found judicial cast iron monument and set construction ties prior to construction.

August 20, 1982 - Reset judicial cast iron monument after nearby sewer construction using area resurvey and construction ties. Updated corner ties. Set sign and post on the north side.

April 16, 1984 - Found judicial cast iron monument and updated ties.

October 27, 1988 - Found judicial cast iron monument and updated ties.

December 3, 1998 - Found judicial cast iron monument and updated ties.

April 6, 2000 - Found judicial cast iron monument down 1'± and updated ties. Established NAD 1983 (1996 adj.) Anoka County project coordinates by static GPS methods.

April 1, 2010 - Found judicial cast iron monument and updated ties.

October 4, 2013 - Found judicial cast iron monument down 1'± and updated ties.

December 18, 2020 - Found judicial cast iron monument down 0.1'±. Updated ties. Checked position by VRS GPS methods.

January 05, 2021 - Found judicial cast iron monument and checked position by static GPS methods.