

CERTIFICATE OF LOCATION OF GOVERNMENT CORNER

County of Anoka

State of Minnesota

Sixteenth Corner of Sec. 36 Township 32 Range 25

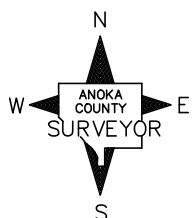
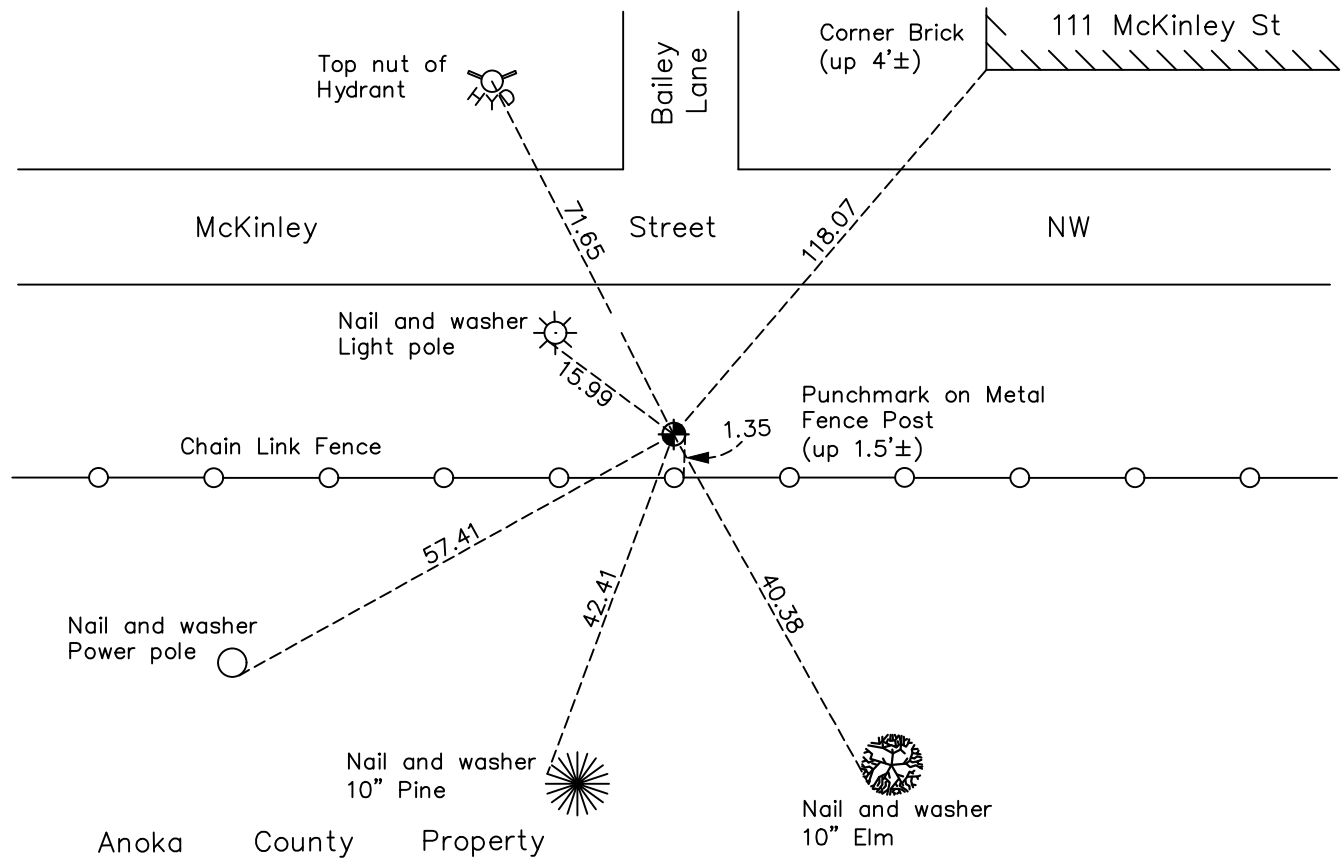
(On east line of SE1/4)

On the 18th day of April, 1963, the described corner was evidenced by an iron pipe set
by N.C. Hoium

and to perpetuate the location of said corner, at the exact location thereof, a permanent marker
was placed consisting of a cast iron monument with a sign and post on the south side

AND on the 19th day of January, 2023, said permanent marker was reset CIM using found ties,
down $0.2' \pm$, coordinates were updated using County RTK GPS method and the ties were updated

Updated reference ties are as shown below.



Revision Date

1/24/2023

N.A.D. 1983 Coordinates
(2011 Adjustment)

County Project Coordinates	
Northing	165905.104
Easting	468550.353
Date	1/19/2023

I hereby certify that this United States public land survey monument record is correct and complete to the best of my knowledge and belief.

David Zieglmeier Date 2/22/23

David Zieglmeier Anoka County Surveyor
Minnesota License Number 46179

HISTORY OF GOVERNMENT CORNER

Page No. 130

County of Anoka

State of Minnesota

Sixteenth Corner of Sec. 36 Township 32 Range 25 (On east line of SE1/4)

CORNER HISTORY:

April 18, 1963 - Found 1/2" Iron Pipe set by N.C. Hoium, After verifying ties replaced with a Cast Iron Monument and the ties were updated.

August 12, 1964 - Found monument and the ties were updated.

June 27, 1969 - Found cast iron monument and the ties were updated.

August 2, 1972 - Found cast iron monument and the ties were updated.

July 9, 1976 - Found cast iron monument and the ties were updated.

June 29, 1979 - Found cast iron monument and the ties were updated.

July 23, 1985 - Found cast iron monument and the ties were updated.

June 29, 1988 - Found cast iron monument and the ties were updated.

August 6, 1993 - Found cast iron monument and the ties were updated.

December 17, 1999 - Found cast iron monument and the ties were updated.

April 6, 2010 - Field notes indicate monument not found

January 19, 2023 - Set cast iron monument using found ties, down 0.2'±. Updated coordinates using County RTK GPS method and the ties were updated with new position. Previous Coordinates NAD 1983 (1996 adj) Northing 165905.1234; Easting 468550.4946