

CERTIFICATE OF LOCATION OF GOVERNMENT CORNER

County of Anoka

State of Minnesota

Witness Corner of Sec. 36 Township 32 Range 25

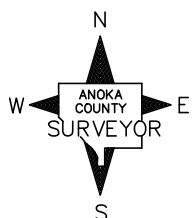
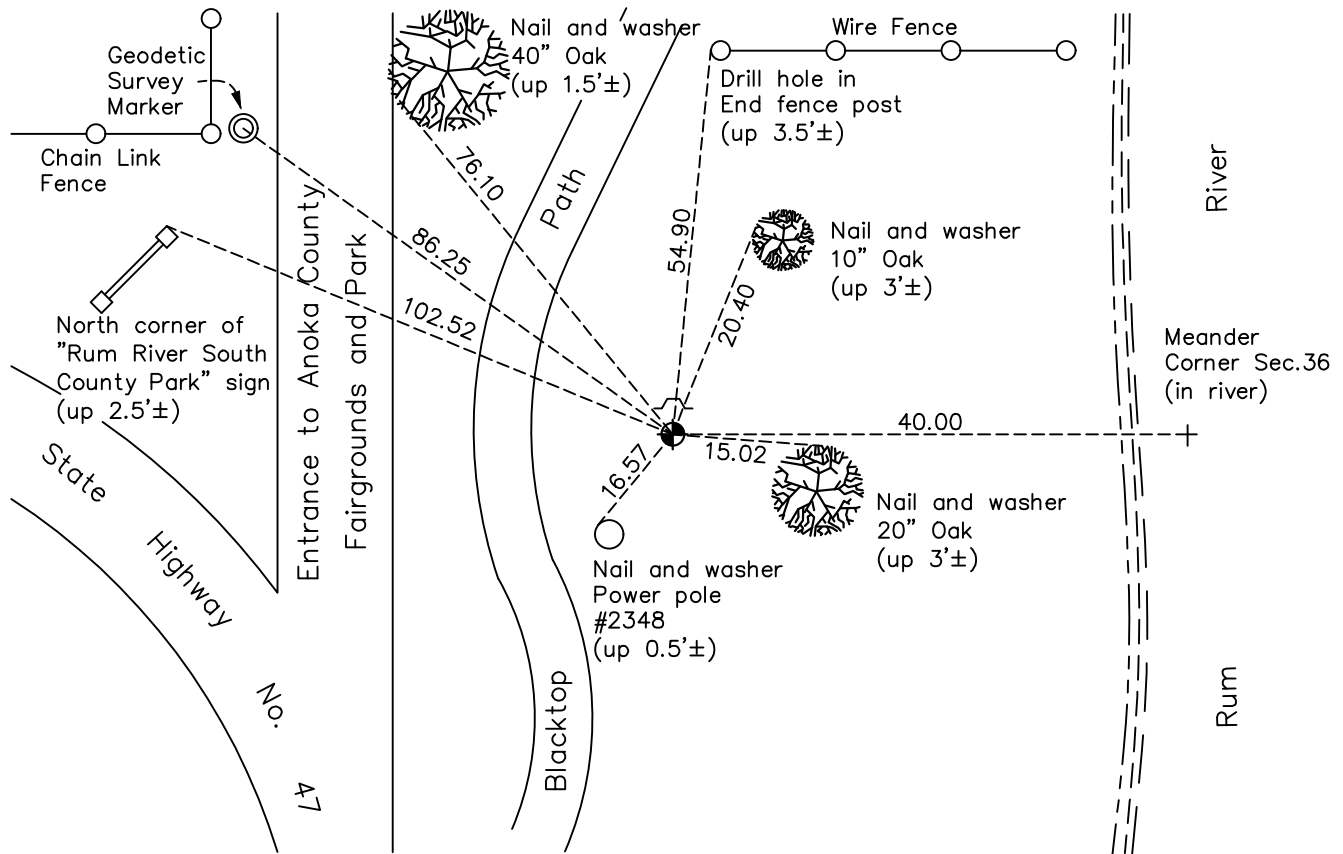
(On south line of section)

On the 1st day of July, 1963, the described corner was evidenced by area resurvey

and to perpetuate the location of said corner, at the exact location thereof, a permanent marker was placed consisting of a cast iron monument

AND on the 25th day of October, 2022, said permanent marker was found down 0.1'± with a sign and post on the north side and the ties were updated

Updated reference ties are as shown below.



N.A.D. 1983 Coordinates
(1996 Adjustment)

County Project Coordinates	
Northing	<u>164601.9780</u>
Easting	<u>468141.9650</u>
Date	<u>4/06/00</u>

Revision Date
1/11/2023

I hereby certify that this United States public land survey monument record is correct and complete to the best of my knowledge and belief.
David Zieglmeier Date 2/22/23
 David Zieglmeier Anoka County Surveyor
 Minnesota License Number 46179

HISTORY OF GOVERNMENT CORNER

Page No. 132

County of Anoka

State of Minnesota

Witness Corner of Sec. 36 Township 32 Range 25
(On south line of section)

CORNER HISTORY:

September 14, 1943 – Cartwright found concrete monument down 0.5'± and established ties to monument.

July 1, 1963 – Set cast iron monument flush with the surface using area resurvey and established ties to monument.

August 12, 1964 – Found cast iron monument and updated ties.

June 23, 1969 – Found cast iron monument and updated ties.

August 2, 1972 – Found cast iron monument and updated ties.

July 12, 1976 – Found cast iron monument and updated ties.

June 27, 1979 – Found cast iron monument and updated ties.

August 17, 1982 – Found cast iron monument and updated ties.

July 17, 1985 – Found cast iron monument and updated ties.

June 29, 1988 – Found cast iron monument and updated ties.

August 11, 1993 – Found cast iron monument and updated ties.

April 6, 2000 – Found cast iron monument with a sign and post on the north side and established NAD 1983 (1996 Adjustment) Anoka County Project Coordinates by Static GPS methods. Updated ties.

April 6, 2010 – Found cast iron monument with a sign and post on the north side and updated ties.

July 13, 2015 – Found cast iron monument with a sign and post on the north side and updated ties.

March 25, 2020 – Found cast iron monument with a sign and post on the north side and updated ties. Verified position of corner by VRS GPS method.

October 25, 2022 – Found cast iron monument down 0.1'±, verified the position of the corner by VRS GPS method and the ties were updated.