

# CERTIFICATE OF LOCATION OF GOVERNMENT CORNER

County of Anoka

State of Minnesota

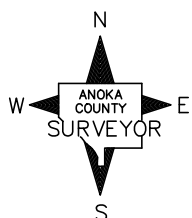
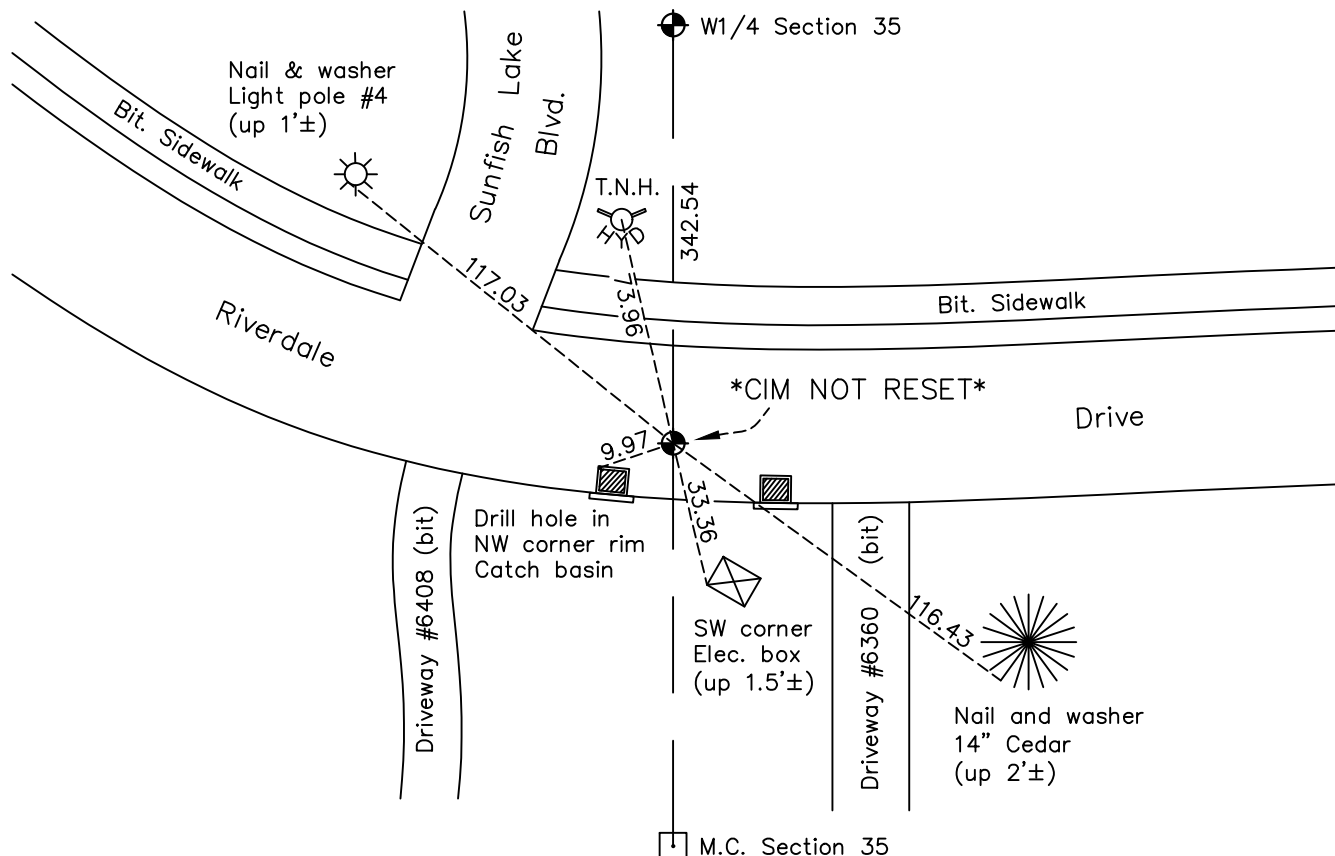
Witness Corner of Sec. 35 Township 32 Range 25  
(On west line of section)

On the 11th day of September, 1989, the described corner was evidenced by area resurvey

and to perpetuate the location of said corner, at the exact location thereof, a permanent marker was placed consisting of a cast iron monument

AND on the 5th day of March, 2024, said permanent marker was found flush. Updated ties. Verified position w/RTK GPS method. CIM removed prior to construction and not reset after.

Updated reference ties are as shown below.



Revision Date

1/24/2025

N.A.D. 1983 Coordinates  
(1996 Adjustment)

County Project Coordinates

Northing 166817.1559Easting 458084.1360Date 12/16/99

I hereby certify that this United States public land survey monument record is correct and complete to the best of my knowledge and belief.

David Zieglmeier Date 2/3/25

David Zieglmeier Anoka County Surveyor

Minnesota License Number 46179

# HISTORY OF GOVERNMENT CORNER

Page No. 136

County of Anoka

State of Minnesota

Witness Corner of Sec. 35 Township 32 Range 25  
(On west line of section)

## **CORNER HISTORY:**

July 1850 - This corner was established by John Ryan, Deputy Surveyor. Ryan marked this position by "set meander post on left bank of Mississippi River" with two bearing trees marked as accessories. Distance of 50.00 chains south of NW Corner Section 35 and 10.00 chains south of West Quarter Corner Section 35.

September 11, 1989 - Location of Meander Corner to the south found to be inaccessible after construction and not reset. A Witness Corner was set 342.54 feet southerly of the West Quarter Corner, along the west line of Section 35 using area resurvey (I-file 126). Witness Corner consists of a cast iron monument flush with the surface. Established ties to monument.

August 10, 1993 - Found cast iron monument and updated ties.

December 16, 1999 - Found cast iron monument and updated ties. Established NAD 1983 (1996 adj.) Anoka County project coordinates by static GPS methods.

5/19/10, 10/20/15 - Found cast iron monument and updated ties.

3/19/20, 10/13/22 - Found cast iron monument. Verified position by VRS GPS methods. Updated ties.

March 5, 2024 - Found cast iron monument. Verified position by RTK GPS method and updated existing ties. Monument removed prior to road construction and will not be reset after construction. Job #24-100 Rd Recon. Meander Corner to the South will be reset along section line instead.