

CERTIFICATE OF LOCATION OF GOVERNMENT CORNER

County of Anoka

State of Minnesota

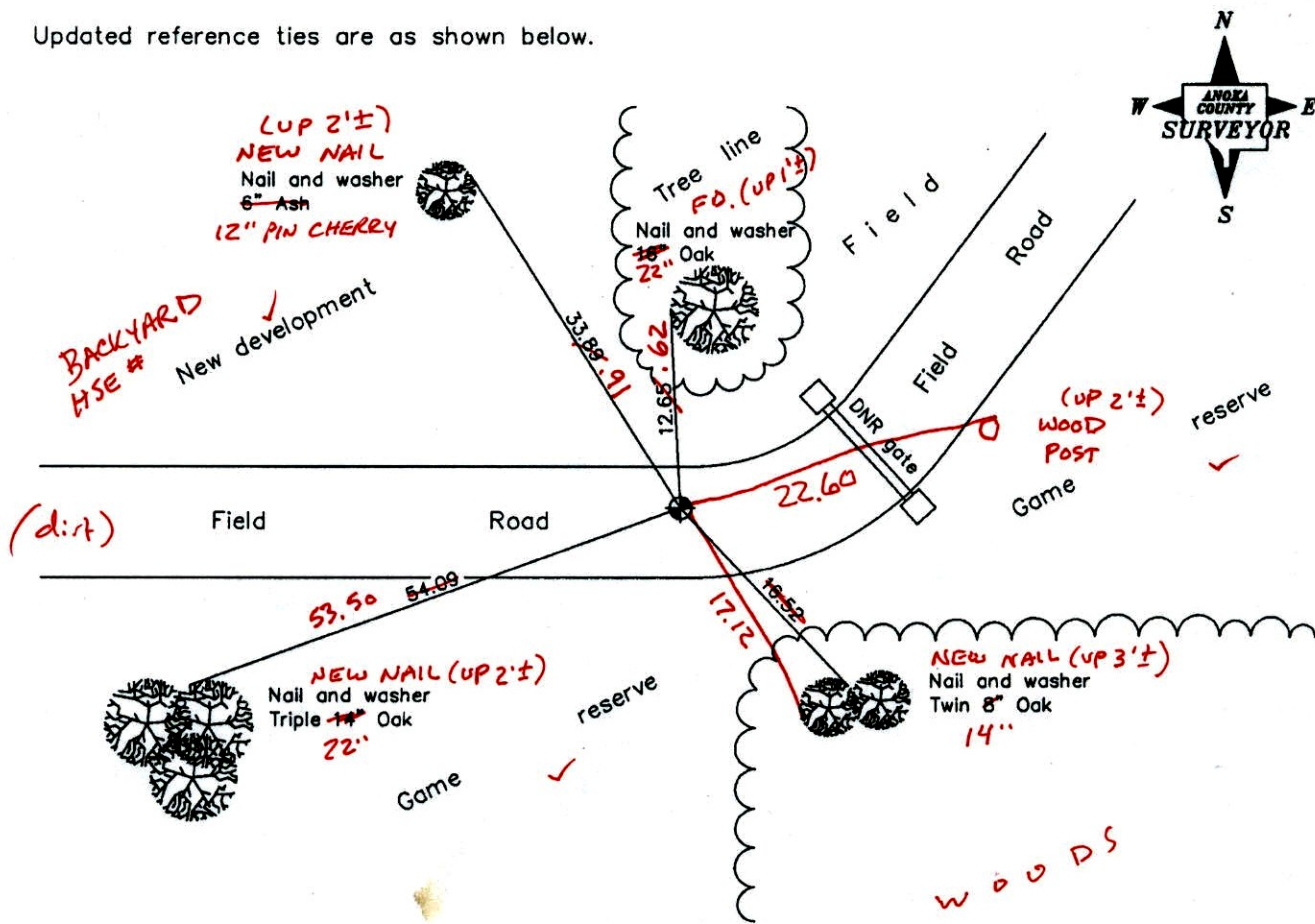
East 1/4 Corner of Sec. 27 Township 34 Range 24

On the 16th day of April, 1971, the described corner was evidenced by area resurvey

and to perpetuate the location of said corner, at the exact location thereof, a permanent marker was placed consisting of a cast iron monument (MON. DOWN 0.3'±)

AND on the 17th day of April, 2003, said permanent marker was found and the ties were updated

Updated reference ties are as shown below.



4-7-14
BK-SS
TA-VRS

Revised date
7/21/92
7/18/97
4/17/03

N.A.D. 1983 Coordinates (1996 Adjustment)	
County Project Coordinates	
Northing	<u>235320.1316</u>
Easting	<u>489813.6062</u>
Date	<u>4/17/03</u>

I hereby certify that this United States public land survey monument record is correct and complete to the best of my knowledge and belief.

Larry D. Hoium Date 4/17/03

Larry D. Hoium, Anoka County Surveyor

Minnesota License Number 18165

VRS 3DQ=0.08 N=235320.0889 E=489813.6054

CERTIFICATE OF LOCATION OF GOVERNMENT CORNER

County of Anoka

State of Minnesota

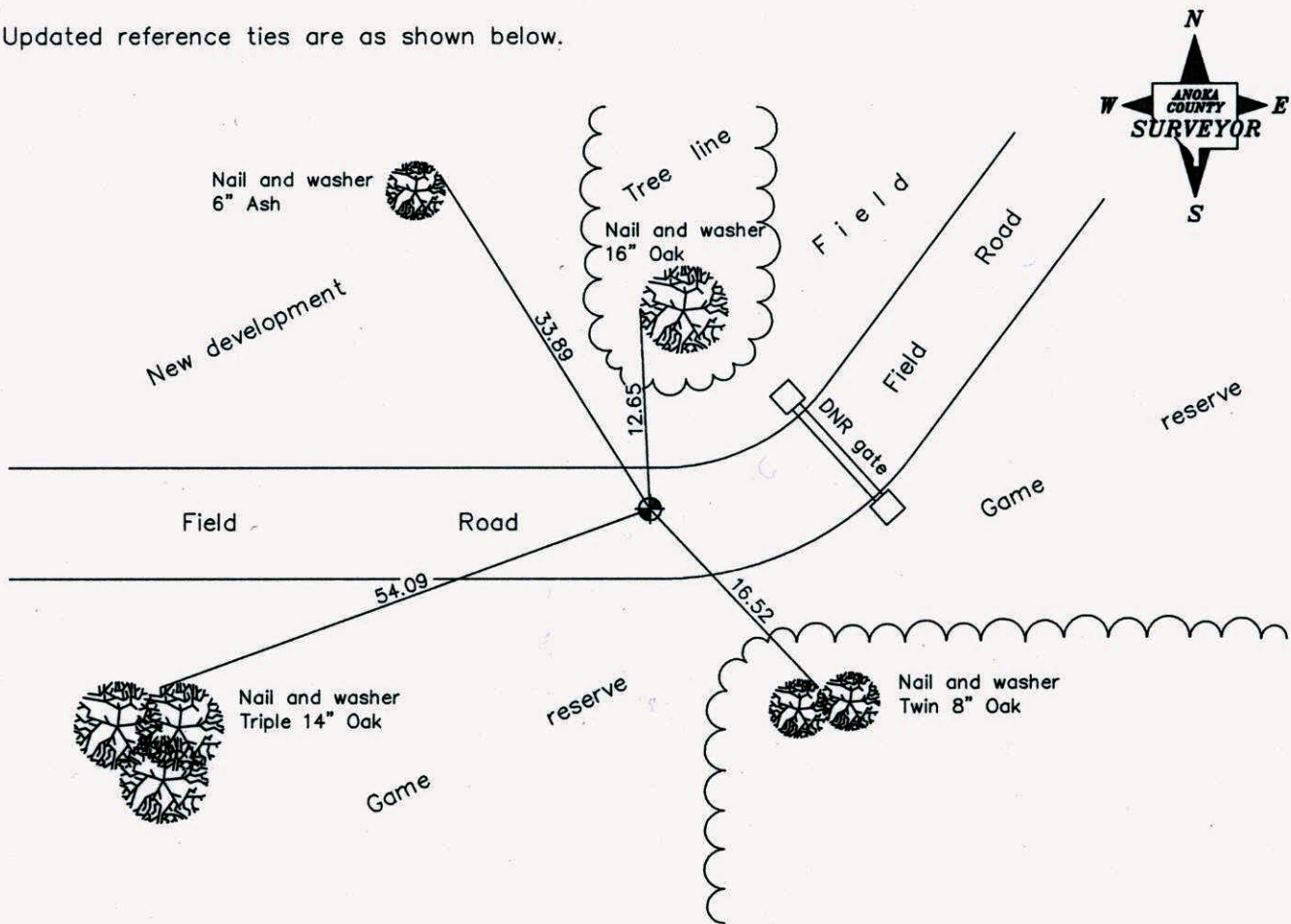
East 1/4 Corner of Sec. 27 Township 34 Range 24

On the 16th day of April, 1971, the described corner was evidenced by area resurvey

and to perpetuate the location of said corner, at the exact location thereof, a permanent marker was placed consisting of a cast iron monument

AND on the 17th day of April, 2003, said permanent marker was found and the ties were updated

Updated reference ties are as shown below.



Revised date
7/21/92
7/18/97
4/17/03

N.A.D. 1983 Coordinates (1996 Adjustment)	
County Project Coordinates	
Northing	<u>235320.1316</u>
Easting	<u>489813.6062</u>
Date	<u>4/17/03</u>

I hereby certify that this United States public land survey monument record is correct and complete to the best of my knowledge and belief.

Larry D. Hoium Date 4/17/03

Larry D. Hoium, Anoka County Surveyor

Minnesota License Number 18165

CERTIFICATE OF LOCATION OF GOVERNMENT CORNER

County of Anoka

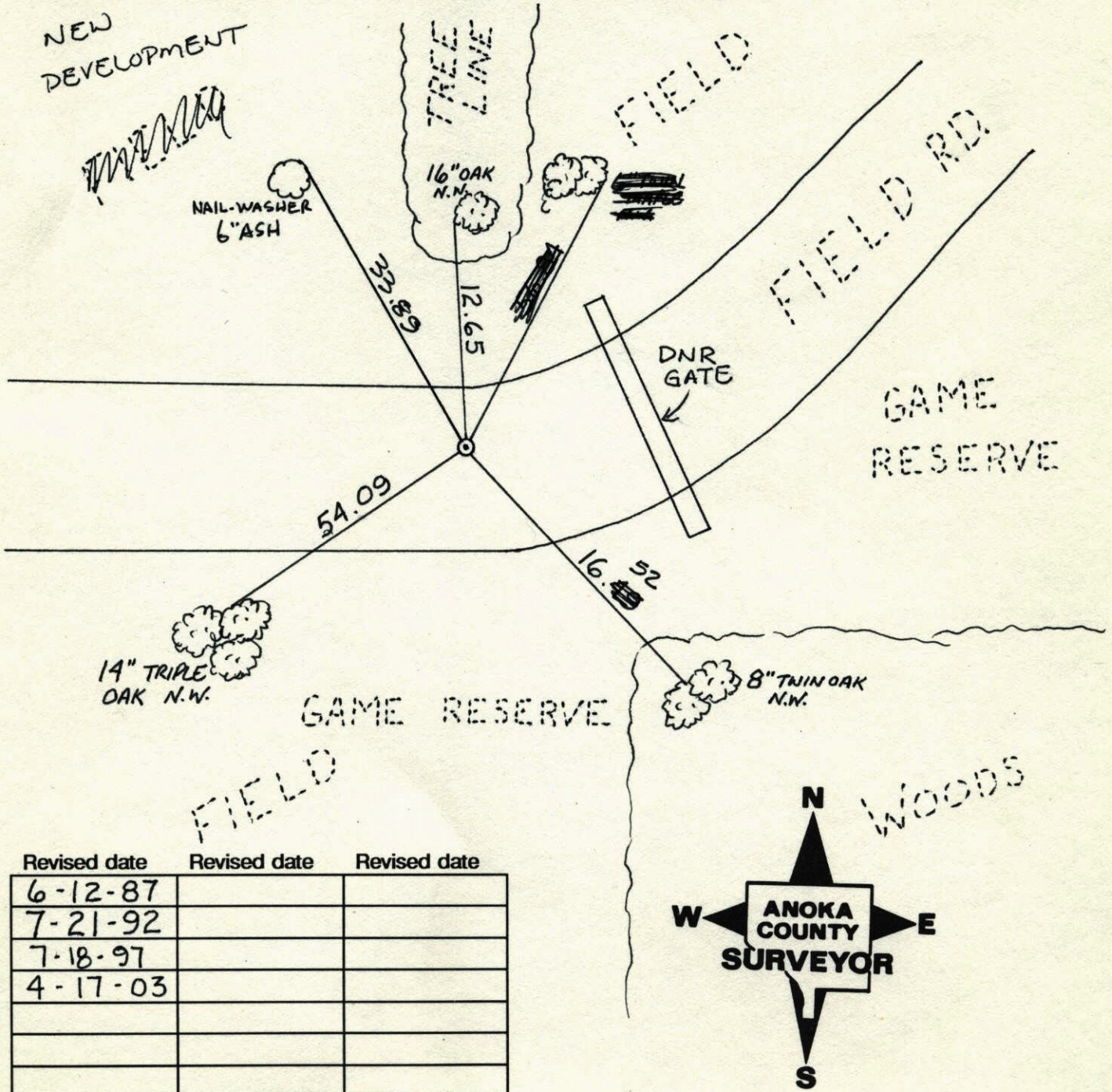
State of Minnesota

EAST QTR. Corner of Sec. 27 Township 34 Range 24

I hereby certify that on the 16 day of APRIL, 1971, I found the described corner which was evidenced by RESURVEY
AREA

and I further certify that to perpetuate the location of said corner, I did, at the exact location thereof, place a permanent marker consisting of CAST IRON MON.

which reference or witness monuments are located in the manner following:

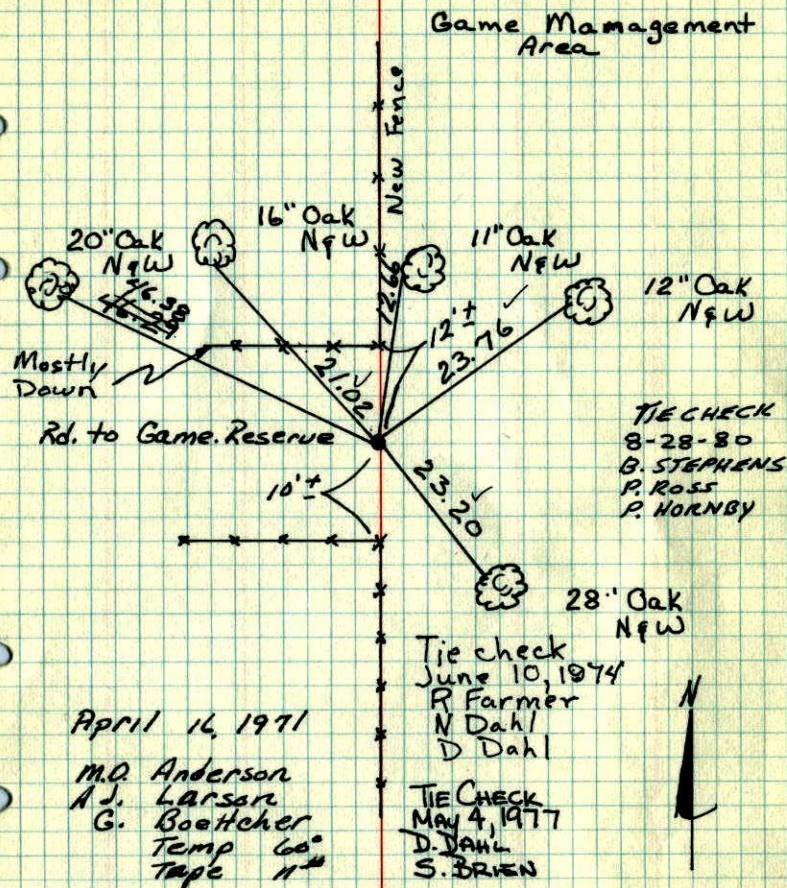


Revised date	Revised date	Revised date
6-12-87		
7-21-92		
7-18-97		
4-17-03		

E 1/4 Cor. Sec. 27 - T34 - R24

Set Cast Iron Mon. From Area Resurvey

C.I. Mon. down 0.2'



TEMPERATURE CORRECTED AND HORIZONTALLY TAPED MEASUREMENTS

ROLAND W. ANDERSON
COUNTY SURVEYOR
ANOKA COUNTY, MINNESOTA

Set cast iron monument From area resurvey. C.I. Flush with sign & post on North Side.

77 75°
8-10-76
H. Larson
B. Gutzko
J. Boettcher

